



AMIS

ASOCIACIÓN MEXICANA DE
INSTITUCIONES DE SEGUROS

Estadistic**AMIS**

PRIMAS

Primer trimestre de 2018





ESTADISTICAMIS PRIMAS

Con la finalidad de atender la solicitud de información, presentamos esta publicación comparando los datos al primer trimestre de 2018, contra los del primer trimestre de 2017.

Se integró como nueva compañía Asociada Berkley Seguros. Por otra parte, Ace Seguros y Aba Seguros concretaron la fusión con Chubb de México, por lo que sus cifras se presentan consolidadas.

No se incluyen los importes de: Protección Agropecuaria, CESCE de México, Pan-American, QBE de México y SISNOVA en virtud de que a la fecha de esta publicación, no se recibió su información.

*EstadisticAMIS Primas es una revista trimestral publicada por la **Asociación Mexicana de Instituciones de Seguros, A.C.**, Francisco I Madero N° 21, Col. Tlacopac San Ángel, Álvaro Obregón, CDMX.*

*Para suscripción y ventas de este archivo electrónico, comunicarse al teléfono 54-80-06-62
E-mail: naviles@amis.com.mx con la Srta. Nancy Avilés Hernández.*

Contenido

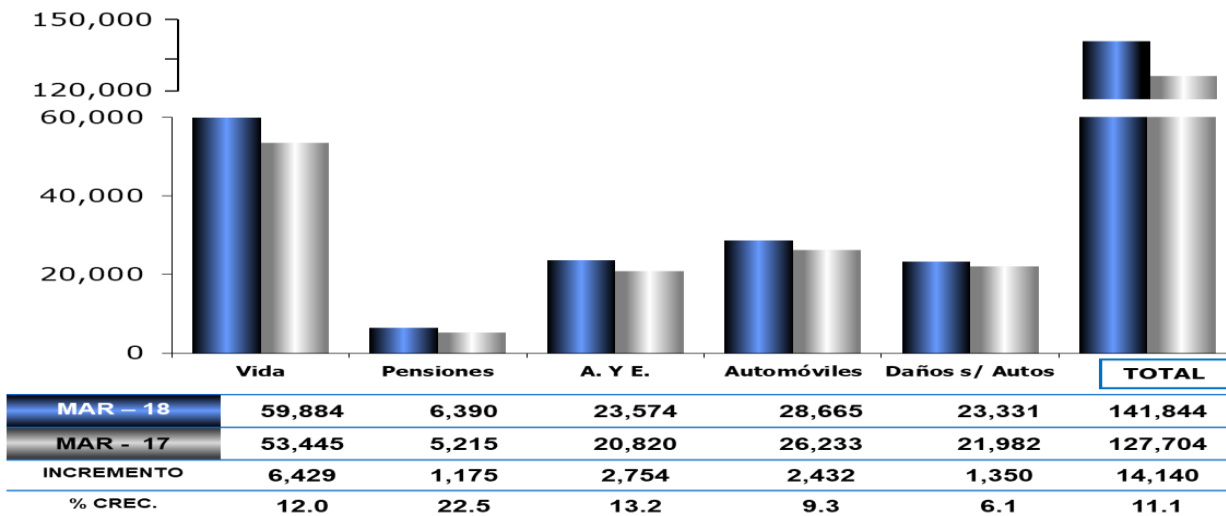
Gráficas.....	1
Total General.....	3
Total General s/Pensiones.....	5
Vida Total.....	7
Vida Individual.....	8
Vida Grupo.....	11
Vida Colectivo	14
Pensiones Total.....	15
Pensiones IMSS	
Pensiones Incap. Permanente (Riesgos de Trabajo)	
Muerte (Riesgos de Trabajo).....	16
Invalidez (Invalidez y Vida)	
Muerte (Invalidez y Vida)	
Jubilación (Retiro Cesantía y Vejez).....	17
Pensiones ISSSTE	
Pensiones Incap. Permanente (Riesgos de Trabajo)	
Muerte (Riesgos de Trabajo).....	18
Invalidez (Invalidez y Vida)	
Muerte (Invalidez y Vida)	
Accidentes y Enfermedades Total.....	19
Accidentes Personales Total	23
Accidentes Personales Individual	24
Accidentes Personales Grupo y Colectivo	25
Gastos Médicos Total	26
Gastos Médicos Grupo y Colectivo	28
Salud Total	29
Salud Individual	
Salud Grupo y Colectivo	

Contenido

Daños	30
Daños S/ Autos	31
Responsabilidad Civil y Rgos. Prof. Total	32
General.....	33
Aviones y Barcos.....	34
Viajero	
Otros.....	35
Marítimo y Transportes	
Carga.....	36
Casco.....	37
Incendio Puro	38
Terremoto y O. Rgos. Catastróficos Total	39
Terremoto y Erupción Volcánica.....	40
Otros (Incluye: Huracán y Otros Riesgos Hidrometeorológicos)	41
Agrícola y de Animales	42
Agrícola	
Pecuario	
Otros	
Automóviles Total	43
Residentes	44
Camiones	45
Turistas	46
Otros más Obligatorios	
Crédito	47
Crédito a la Vivienda	
Diversos Total	48
Misceláneos	49
Técnicos.....	50

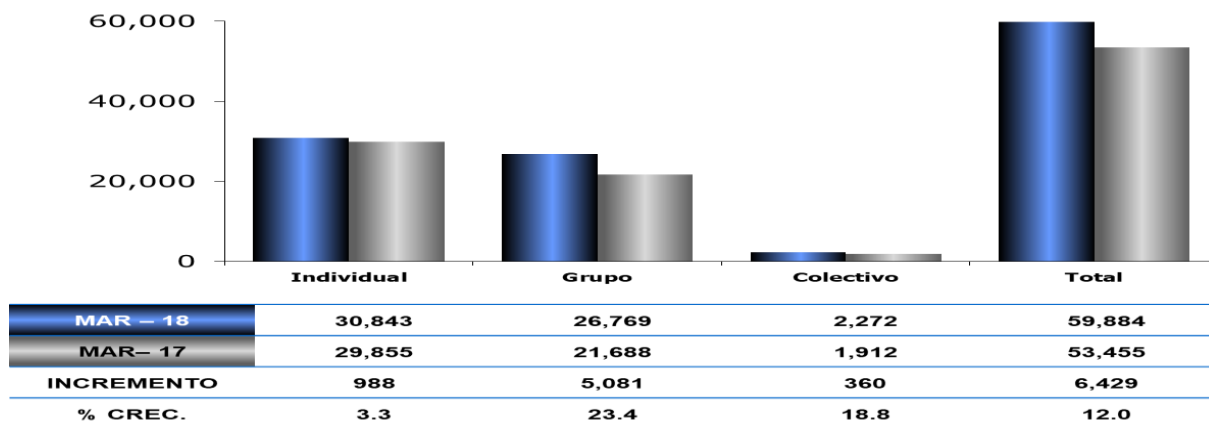
PRIMAS DIRECTAS POR OPERACIÓN

(MILLONES DE PESOS)



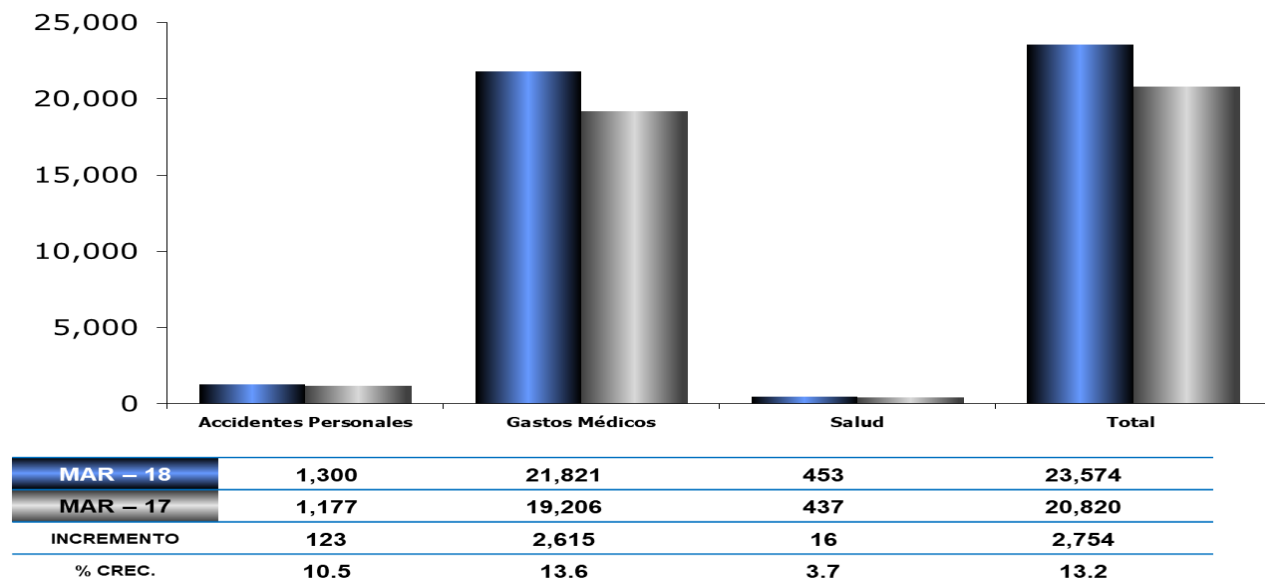
PRIMAS DIRECTAS DE VIDA

(MILLONES DE PESOS)

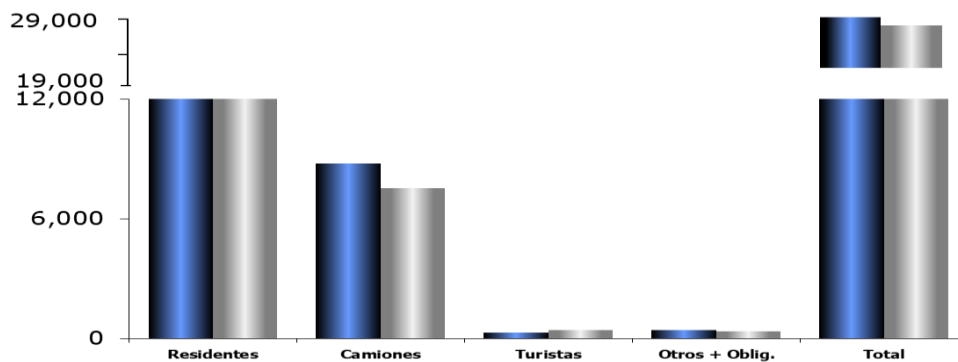


PRIMAS DIRECTAS DE ACCIDENTES Y ENFERMEDADES

(MILLONES DE PESOS)



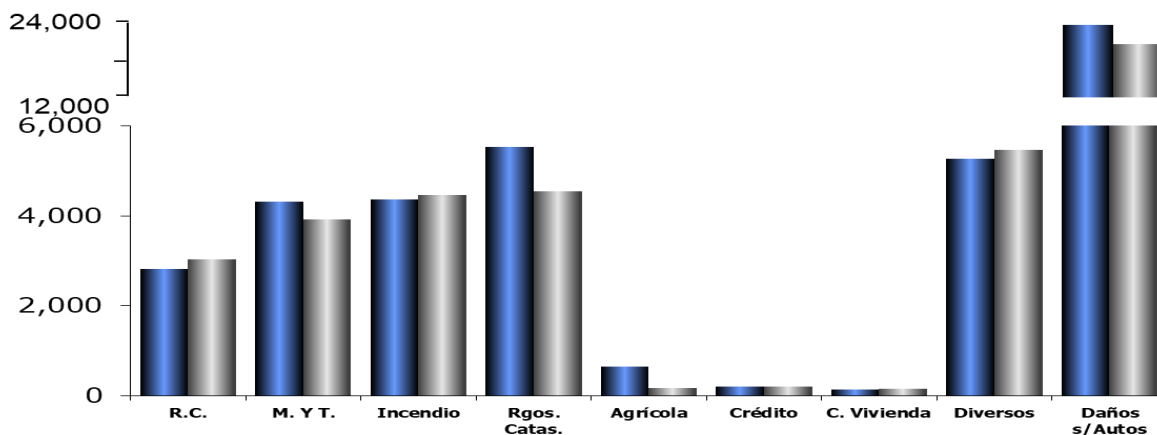
PRIMAS DIRECTAS DE AUTOMÓVILES (MILLONES DE PESOS)



	MAR - 18	MAR - 17	INCREMENTO	% CREC.
Residentes	19,191	17,941	1,250	7.0
Camiones	8,759	7,516	1,242	16.5
Turistas	282	411	(128)	(31.1)
Otros + Oblig.	432	365	67	18.4
Total	28,665	26,233	2,432	9.3

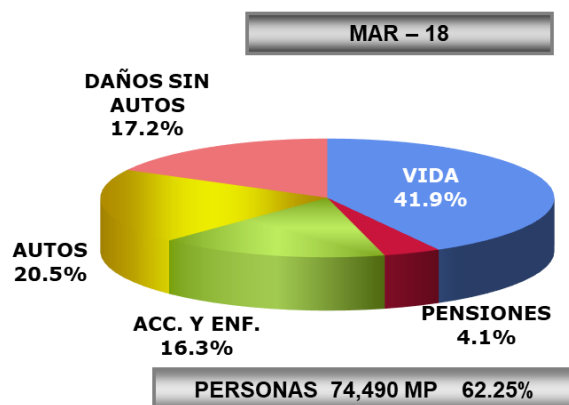
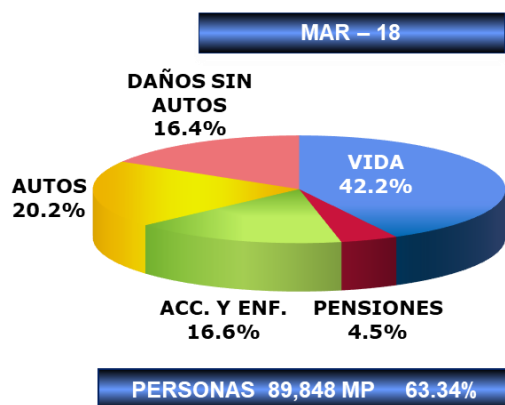
4

PRIMAS DIRECTAS DE DAÑOS (SIN AUTOS) (MILLONES DE PESOS)



	MAR - 18	MAR - 17	INCREMENTO	% CREC.
R.C.	2,821	3,043	(222)	(7.3)
M. Y T.	4,320	3,917	403	10.3
Incendio	4,375	4,471	(96)	(2.1)
Rgos. Catas.	5,542	4,546	996	21.9
Agrícola	652	176	477	271.0
Crédito	211	211	0	0.0
C. Vivienda	139	151	(12)	(7.9)
Diversos	5,270	5,467	(197)	(3.6)
Daños s/Autos	23,331	21,982	1,350	6.1

PARTICIPACION DE MERCADO



Análisis de Primas Directas				Primer Trimestre 2018			
EstadisticAMIS (Primas)							
Total General							
Cifras en miles							
Compañías	Primas Directas		% Part. en Merc.		Incremento		
	2018 Importe	2017 Importe	2018	2017	Importe	%	
1	Metlife México	21,468,164	19,643,756	15.14	15.38	1,824,408	9.29
2	G.N.P.	14,164,113	14,251,849	9.99	11.16	(87,735)	(0.62)
3	Banorte	13,236,352	7,727,215	9.33	6.05	5,509,137	71.30
4	AXA Seguros	9,255,149	8,202,630	6.52	6.42	1,052,520	12.83
5	Qualitas	8,615,598	8,791,665	6.07	6.88	(176,068)	(2.00)
	Grandes	66,739,377	58,617,115	47.05	45.90	8,122,262	13.86
6	BBVA Bancomer	7,511,343	6,578,498	5.3	5.15	932,845	14.18
7	Citibanamex Seguros	7,044,200	6,777,406	4.97	5.31	266,794	3.94
8	Monterrey New York Life	7,034,058	7,286,135	4.96	5.71	(252,077)	(3.46)
9	Chubb de México	5,094,699	3,963,415	3.59	3.10	1,131,284	28.54
10	Inbursa	4,829,146	5,118,694	3.4	4.01	(289,549)	(5.66)
11	Mapfre México	4,689,095	4,207,793	3.31	3.29	481,302	11.44
12	Atlas	3,747,692	3,647,183	2.64	2.86	100,509	2.76
13	GMX Seguros	2,634,585	1,915,399	1.86	1.50	719,185	37.55
14	Allianz México	2,633,872	3,010,048	1.86	2.36	(376,176)	(12.50)
15	Pensiones Banorte	2,349,938	1,978,535	1.66	1.55	371,403	18.77
	Medianas	47,568,628	44,483,108	33.54	34.83	3,085,521	6.94
16	Pensiones BBVA Bancomer	2,187,507	1,903,137	1.54	1.49	284,370	14.94
17	Zurich Daños	2,162,273	1,825,306	1.52	1.43	336,967	18.46
18	HDI Seguros	2,131,337	1,550,257	1.5	1.21	581,080	37.48
19	Afirme	1,775,709	1,370,705	1.25	1.07	405,004	29.55
20	Zurich Santander	1,681,534	1,734,669	1.19	1.36	(53,136)	(3.06)
21	AIG Seguros	1,387,320	1,497,816	0.98	1.17	(110,496)	(7.38)
22	ProFuturo G.N.P.	1,342,905	954,706	0.95	0.75	388,199	40.66
23	Seguros SURA	1,068,448	704,501	0.75	0.55	363,947	51.66
24	Zurich Vida	799,840	825,232	0.56	0.65	(25,391)	(3.08)
25	FM Global	774,492	796,476	0.55	0.62	(21,983)	(2.76)
26	HSBC Seguros	698,654	723,078	0.49	0.57	(24,424)	(3.38)
27	Ve Por Más	687,016	602,657	0.48	0.47	84,359	14.00
28	General de Seguros	651,957	853,096	0.46	0.67	(201,139)	(23.58)
29	Patrimonial Inbursa	634,685	725,092	0.45	0.57	(90,406)	(12.47)
30	Plan Seguro	550,654	424,160	0.39	0.33	126,494	29.82
31	Agroasemex	527,436	3,006	0.37	0.00	524,429	*
32	Hir Seguros	520,185	502,738	0.37	0.39	17,447	3.47
33	BUPA México	502,544	348,829	0.35	0.27	153,715	44.07
34	Pensiones SURA	499,270	363,438	0.35	0.28	135,833	37.37
35	Seguros Azteca	489,871	528,221	0.35	0.41	(38,351)	(7.26)
36	ANA	456,612	356,048	0.32	0.28	100,565	28.24
37	SURA Vida	456,074	492,036	0.32	0.39	(35,962)	(7.31)
38	El Potosí	420,131	397,869	0.3	0.31	22,262	5.60
39	Seguros Argos	393,146	420,243	0.28	0.33	(27,096)	(6.45)
40	Cardif Vida	368,053	398,503	0.26	0.31	(30,451)	(7.64)
41	Tlaloc Seguros	334,402	13,319	0.24	0	321,083	*
42	Assurant Vida	282,270	269,774	0.2	0.21	12,496	4.63
43	Primero Seguros	282,103	186,736	0.2	0.15	95,367	51.07
44	La Latinoamericana	278,088	296,250	0.2	0.23	(18,163)	(6.13)
45	XL Seguros	273,342	484,405	0.19	0.38	(211,063)	(43.57)
46	HDI-Gerling	267,790	247,770	0.19	0.19	20,021	8.08
47	Insignia Life	251,376	197,293	0.18	0.15	54,083	27.41
48	El Águila	214,749	191,116	0.15	0.15	23,633	12.37
49	Assurant Daños	193,269	187,707	0.14	0.15	5,562	2.96
50	Seguros Azteca Daños	192,466	173,524	0.14	0.14	18,942	10.92
51	Tokio Marine	191,952	214,694	0.14	0.17	(22,742)	(10.59)
52	Sompo Japan	185,637	186,005	0.13	0.15	(368)	(0.20)
53	BBVA Bancomer Salud	161,950	102,805	0.11	0.08	59,144	57.53
54	Aserta Seguros de Vida	160,490	60,324	0.11	0.05	100,167	166.05
55	SHF Cred Vivienda	124,470	134,881	0.09	0.11	(10,411)	(7.72)
56	Cardif Seguros Generales	120,053	477,560	0.08	0	(357,507)	(74.86)
57	Atradius	114,818	118,651	0.08	0.09	(3,833)	(3.23)
58	Old Mutual Life	90,415	38,406	0.06	0.03	52,009	135.42
59	Solunion Crédito	87,053	81,360	0.06	0.06	5,694	7.00
60	Prudential	86,789	65,768	0.06	0	21,020	31.96
61	Patrimonial Vida	70,266	126,628	0.05	0.10	(56,362)	(44.51)

Análisis de Primas Directas **Primer Trimestre 2018**

EstadisticAMIS (Primas)

Total General

Cifras en miles

Compañías	Primas Directas		% Part. en Merc.		Incremento	
	2018 Importe	2017 Importe	2018	2017	Importe	%
62 Dentegra	64,935	40,868	0.05	0.03	24,067	58.89
63 MediAccess	64,312	99,099	0.05	0.08	(34,787)	(35.10)
64 PREVEM Seguros	45,767	31,942	0.03	0.03	13,825	43.28
65 General de Salud	45,734	49,039	0.03	0	(3,305)	(6.74)
66 Patrimonial Daños	41,341	55,099	0.03	0.04	(13,759)	(24.97)
67 Berkley Seguros	35,131	0	0.02	0.00	35,131	
68 AXA Salud	22,896	48,818	0.02	0.04	(25,922)	(53.10)
69 Centauro	21,779	20,349	0.02	0.02	1,430	7.03
70 Genworth Seg. de Credito	14,138	15,851	0.01	0.01	(1,713)	(10.81)
71 Odontoprev	12,774	6,264	0.01	0.00	6,509	103.92
72 Interacciones	12,024	9,915	0.01	0.01	2,109	21.27
73 Metlife Mas	6,867	54,966	0.00	0.04	(48,099)	(87.51)
74 Virginia Surety	6,463	0	0.00	0.00	6,463	
75 HSBC Pensiones	4,118	989	0.00	0.00	3,129	316.42
76 Pensiones Inbursa	3,337	5,098	0.00	0.00	(1,761)	(34.54)
77 Citibanamex Pensiones	2,391	6,108	0.00	0.00	(3,716)	(60.85)
78 Metlife Pensiones	742	2,404	0.00	0.00	(1,662)	(69.14)
79 Principal México	81	90	0.00	0.00	(9)	(9.96)
80 Principal Pensiones	0	512	0.00	0.00	(512)	(100.00)
Resto	27,536,232	24,604,205	19.41	19.27	2,932,027	11.92
Total	141,844,237	127,704,428	100.00	100.00	14,139,809	11.07

NE = No Existe, ND = NO DISPONIBLE

* % Extraordinario mayor de 1000%



Análisis de Primas Directas				Primer Trimestre 2018			
EstadisticAMIS (Primas)							
Total General sin Pensiones							
Cifras en miles							
Compañías	Primas Directas		% Part. en Merc.		Incremento		
	2018 Importe	2017 Importe	2018	2017	Importe	%	
1	Metlife México	21,468,164	19,643,756	15.85	16.04	1,824,408	9.29
2	G.N.P.	14,164,113	14,251,849	10.46	11.64	(87,735)	(0.62)
3	Banorte	13,236,352	7,727,215	9.77	6.31	5,509,137	71.30
4	AXA Seguros	9,255,149	8,202,630	6.83	6.70	1,052,520	12.83
5	Qualitas	8,615,598	8,791,665	6.36	7.18	(176,068)	(2.00)
	Grandes	66,739,377	58,617,115	49.27	47.85	8,122,262	13.86
6	BBVA Bancomer	7,511,343	6,578,498	5.55	5.37	932,845	14.18
7	Citibanamex Seguros	7,044,200	6,777,406	5.20	5.53	266,794	3.94
8	Monterrey New York Life	7,034,058	7,286,135	5.19	5.95	(252,077)	(3.46)
9	Chubb de México	5,094,699	3,963,415	3.76	3.24	1,131,284	28.54
10	Inbursa	4,829,146	5,118,694	3.57	4.18	(289,549)	(5.66)
11	Mapfre México	4,689,095	4,207,793	3.46	3.44	481,302	11.44
12	Atlas	3,747,692	3,647,183	2.77	2.98	100,509	2.76
13	GMX Seguros	2,634,585	1,915,399	1.95	1.56	719,185	37.55
14	Allianz México	2,633,872	3,010,048	1.94	2.46	(376,176)	(12.50)
15	Zurich Daños	2,162,273	1,825,306	1.60	1.49	336,967	18.46
	Medianas	47,380,963	44,329,878	34.98	36.19	3,051,085	6.88
16	HDI Seguros	2,131,337	1,550,257	1.57	1.27	581,080	37.48
17	Afirme	1,775,709	1,370,705	1.31	1.12	405,004	29.55
18	Zurich Santander	1,681,534	1,734,669	1.24	1.42	(53,136)	(3.06)
19	AIG Seguros	1,387,320	1,497,816	1.02	1.22	(110,496)	(7.38)
20	Seguros SURA	1,068,448	704,501	0.79	0.58	363,947	51.66
21	Zurich Vida	799,840	825,232	0.59	0.67	(25,391)	(3.08)
22	FM Global	774,492	796,476	0.57	0.65	(21,983)	(2.76)
23	HSBC Seguros	698,654	723,078	0.52	0.59	(24,424)	(3.38)
24	Ve Por Más	687,016	602,657	0.51	0.49	84,359	14.00
25	General de Seguros	651,957	853,096	0.48	0.70	(201,139)	(23.58)
26	Patrimonial Inbursa	634,685	725,092	0.47	0.59	(90,406)	(12.47)
27	Plan Seguro	550,654	424,160	0.41	0.35	126,494	29.82
28	Agroasemex	527,436	3,006	0.39	0.00	524,429	*
29	Hir Seguros	520,185	502,738	0.38	0.41	17,447	3.47
30	BUPA México	502,544	348,829	0.37	0.28	153,715	44.07
31	Seguros Azteca	489,871	528,221	0.36	0.43	(38,351)	(7.26)
32	ANA	456,612	356,048	0.34	0.29	100,565	28.24
33	SURA Vida	456,074	492,036	0.34	0.40	(35,962)	(7.31)
34	El Potosi	420,131	397,869	0.31	0.32	22,262	5.60
35	Seguros Argos	393,146	420,243	0.29	0.34	(27,096)	(6.45)
36	Cardif Vida	368,053	398,503	0.27	0.33	(30,451)	(7.64)
37	Tlaloc Seguros	334,402	13,319	0.25	0	321,083	*
38	Assurant Vida	282,270	269,774	0.21	0.22	12,496	4.63
39	Primero Seguros	282,103	186,736	0.21	0.15	95,367	51.07
40	La Latinoamericana	278,088	296,250	0.21	0.24	(18,163)	(6.13)
41	XL Seguros	273,342	484,405	0.20	0.40	(211,063)	(43.57)
42	HDI-Gerling	267,790	247,770	0.20	0.20	20,021	8.08
43	Insignia Life	251,376	197,293	0.19	0.16	54,083	27.41
44	El Aguila	214,749	191,116	0.16	0.16	23,633	12.37
45	Assurant Daños	193,269	187,707	0.14	0.15	5,562	2.96
46	Seguros Azteca Daños	192,466	173,524	0.14	0.14	18,942	10.92
47	Tokio Marine	191,952	214,694	0.14	0.18	(22,742)	(10.59)
48	Sompo Japan	185,637	186,005	0.14	0.15	(368)	(0.20)
49	BBVA Bancomer Salud	161,950	102,805	0.12	0.08	59,144	57.53
50	Aserta Seguros de Vida	160,490	60,324	0.12	0.05	100,167	166.05
51	SHF Cred Vivienda	124,470	134,881	0.09	0.11	(10,411)	(7.72)
52	Cardif Seguros Generales	120,053	477,560	0.09	0	(357,507)	(74.86)
53	Atradius	114,818	118,651	0.08	0.10	(3,833)	(3.23)

Análisis de Primas Directas **Primer Trimestre 2018**

EstadisticAMIS (Primas)

Total General sin Pensiones

Cifras en miles

Compañías	Primas Directas		% Part. en Merc.		Incremento	
	2018 Importe	2017 Importe	2018	2017	Importe	%
54 Old Mutual Life	90,415	38,406	0.07	0.03	52,009	135.42
55 Solucion Crédito	87,053	81,360	0.06	0.07	5,694	7.00
56 Prudential	86,789	65,768	0.06	0	21,020	31.96
57 Patrimonial Vida	70,266	126,628	0.05	0.10	(56,362)	(44.51)
58 Dentegra	64,935	40,868	0.05	0.03	24,067	58.89
59 MediAccess	64,312	99,099	0.05	0.08	(34,787)	(35.10)
60 PREVEM Seguros	45,767	31,942	0.03	0.03	13,825	43.28
61 General de Salud	45,734	49,039	0.03	0	(3,305)	(6.74)
62 Patrimonial Daños	41,341	55,099	0.03	0.04	(13,759)	(24.97)
63 Berkley Seguros	35,131	0	0.03	0.00	35,131	
64 AXA Salud	22,896	48,818	0.02	0.04	(25,922)	(53.10)
65 Centauro	21,779	20,349	0.02	0.02	1,430	7.03
66 Genworth Seg. de Credito	14,138	15,851	0.01	0.01	(1,713)	(10.81)
67 Odontoprev	12,774	6,264	0.01	0.01	6,509	103.92
68 Interacciones	12,024	9,915	0.01	0.01	2,109	21.27
69 Metlife Mas	6,867	54,966	0.01	0.04	(48,099)	(87.51)
70 Virginia Surety	6,463	0	0.00	0.00	6,463	
71 Principal México	81	90	0.00	0.00	(9)	(9.96)
Resto	21,333,687	19,542,507	15.75	15.95	1,791,180	9.17
Total	135,454,028	122,489,501	100.00	100.00	12,964,527	10.58

NE = No Existe, ND = NO DISPONIBLE

* % Extraordinario mayor de 1000%



Análisis de Primas Directas		EstadisticAMIS (Primas)						Primer Trimestre 2018
		Vida Total						
		Cifras en miles						
Compañías	Primas Directas		% Part. en Merc.		Incremento		% de Cartera	
	2018 Importe	2017 Importe	2018	2017	Importe	%	Total Cartera	
1	MetLife México	16,201,960	14,947,673	27.06	27.96	1,254,287	8.39	11.96
2	Banorte	8,043,360	3,765,191	13.43	7.04	4,278,170	113.62	5.94
3	Citibanamex Seguros	6,716,955	6,493,048	11.22	12.15	223,907	3.45	4.96
4	BBVA Bancomer	5,400,235	4,308,454	9.02	8.06	1,091,782	25.34	3.99
5	G.N.P.	5,223,932	5,013,416	8.72	9.38	210,517	4.20	3.86
	Grandes	41,586,443	34,527,781	69.45	64.59	7,058,662	20.44	30.7
6	Monterrey New York Life	4,733,127	4,870,991	7.90	9.11	(137,865)	(2.83)	3.49
7	AXA Seguros	1,473,549	1,437,369	2.46	2.69	36,180	2.52	1.09
8	Mapfre México	1,338,516	1,171,862	2.24	2.19	166,653	14.22	0.99
9	Allianz México	1,320,131	1,622,960	2.20	3.04	(302,829)	(18.66)	0.97
10	Inbursa	1,252,836	1,593,813	2.09	2.98	(340,977)	(21.39)	0.92
11	Atlas	1,095,059	1,021,522	1.83	1.91	73,537	7.20	0.81
12	Zurich Santander	1,001,304	1,001,234	1.67	1.87	70	0.01	0.74
13	HSBC Seguros	638,312	647,279	1.07	1.21	(8,968)	(1.39)	0.47
14	Hir Seguros	519,260	501,381	0.87	0.94	17,879	3.57	0.38
15	Chubb de México	509,438	370,067	0.85	0.69	139,371	37.66	0.38
	Medianas	13,881,532	14,238,480	23.18	26.64	(356,948)	(2.51)	10.25
16	Seguros Azteca	465,826	508,385	0.78	0.95	(42,559)	(8.37)	0.34
17	SURA Vida	456,064	492,011	0.76	0.92	(35,947)	(7.31)	0.34
18	Patrimonial Inbursa	423,670	482,417	0.71	0.90	(58,747)	(12.18)	0.31
19	Seguros Argos	393,146	420,243	0.66	0.79	(27,096)	(6.45)	0.29
20	Cardif Vida	366,823	398,515	0.61	0.75	(31,692)	(7.95)	0.27
21	Zurich Vida	330,888	498,850	0.55	0.93	(167,962)	(33.67)	0.24
22	Afirme	308,873	249,532	0.52	0.47	59,341	23.78	0.23
23	Assurant Vida	282,270	269,544	0.47	0.50	12,726	4.72	0.21
24	Insignia Life	251,376	197,293	0.42	0.37	54,083	27.41	0.19
25	Seguros SURA	165,530	105,388	0.28	0.20	60,142	57.07	0.12
26	Ve Por Más	164,457	118,484	0.27	0.22	45,973	38.80	0.12
27	Aserta Seguros de Vida	159,437	59,134	0.27	0.11	100,303	169.62	0.12
28	La Latinoamericana	136,886	164,331	0.23	0.31	(27,445)	(16.70)	0.10
29	El Potosi	133,223	166,037	0.22	0.31	(32,814)	(19.76)	0.10
30	General de Seguros	93,475	280,110	0.16	0.52	(186,635)	(66.63)	0.07
31	Old Mutual Life	90,415	38,406	0.15	0.07	52,009	135.42	0.07
32	Prudential	86,789	65,768	0.14	0.12	21,020	31.96	0.06
33	Patrimonial Vida	70,266	126,628	0.12	0.24	(56,362)	(44.51)	0.05
34	Tokio Marine	26,352	41,320	0.04	0.08	(14,968)	(36.22)	0.02
35	Interacciones	6,795	3,881	0.01	0.01	2,913	75.06	0.01
36	Agroasemex	2,098	995	0.00	0.00	1,103	110.93	0.00
37	HDI Seguros	1,088	1,274	0.00	0.00	(186)	(14.58)	0.00
38	Principal México	81	90	0.00	0.00	(9)	(9.96)	0.00
	Resto	4,415,829	4,688,637	7.37	8.77	(272,807)	(5.82)	3.26
	Total	59,883,805	53,454,898	100.00	100.00	6,428,907	12.03	44.21

NE = No Existe, ND = NO DISPONIBLE

*% Extraordinario mayor de 1000%



Análisis de Primas Directas

Primer Trimestre 2018

EstadisticAMIS (Primas)

Vida Individual

Cifras en miles

Compañías	Primas Directas		% Part. en Merc.		Incremento		% de Cartera	
	2018 Importe	2017 Importe	2018	2017	Importe	%	Por Operación	Total Cartera
1 Citibanamex Seguros	5,893,270	5,641,277	19.11	18.90	251,993	4.47	87.74	83.66
1 1er Año	4,015,200	3,981,032	13.02	13.33	34,168	0.86	59.78	57.00
1 Renovación	1,878,071	1,660,246	6.09	5.56	217,825	13.12	27.96	26.66
1 Únicas	0	0	0.00	0.00	0		0.00	0.00
2 Metlife México	5,875,127	6,040,548	19.05	20.23	(165,421)	(2.74)	36.26	27.37
2 1er Año	628,763	687,903	2.04	2.30	(59,140)	(8.60)	3.88	2.93
2 Renovación	4,351,581	4,191,986	14.11	14.04	159,595	3.81	26.86	20.27
2 Únicas	894,784	1,160,660	2.90	3.89	(265,876)	(22.91)	5.52	4.17
2 G.N.P.	4,449,725	4,219,320	14.43	14.13	230,404	5.46	85.18	31.42
3 1er Año	495,326	483,714	1.61	1.62	11,612	2.40	9.48	3.50
3 Renovación	2,519,986	2,301,397	8.17	7.71	218,589	9.50	48.24	17.79
3 Únicas	1,434,413	1,434,210	4.65	4.80	203	0.01	27.46	10.13
4 Monterrey New York Life	4,345,981	4,432,283	14.09	14.85	(86,301)	(1.95)	91.82	61.78
4 1er Año	506,235	513,355	1.64	1.72	(7,121)	(1.39)	10.70	7.20
4 Renovación	2,599,122	2,523,464	8.43	8.45	75,658	3.00	54.91	36.95
4 Únicas	1,240,624	1,395,463	4.02	4.67	(154,839)	(11.10)	26.21	17.64
5 BBVA Bancomer	4,308,326	2,915,999	13.97	9.77	1,392,327	47.75	79.78	57.36
5 1er Año	3,858,761	2,050,106	12.51	6.87	1,808,655	88.22	71.46	51.37
5 Renovación	438,298	857,459	1.42	2.87	(419,160)	(48.88)	8.12	5.84
5 Únicas	11,267	8,434	0.04	0.03	2,833	33.59	0.21	0.15
Grandes	24,872,430	23,249,428	80.64	77.87	1,623,002	6.98	64.98	43.47
1er Año	9,504,284	7,716,110	30.82	25.85	1,788,175	23.17	24.83	16.61
Renovación	11,787,057	11,534,551	38.22	38.64	252,506	2.19	30.79	20.60
Únicas	3,581,088	3,998,767	11.61	13.39	(417,679)	(10.45)	9.36	6.26
6 Allianz México	1,217,233	1,376,678	3.95	4.61	(159,445)	(11.58)	92.21	46.21
6 1er Año	515,060	836,872	1.67	2.80	(321,813)	(38.45)	39.02	19.56
6 Renovación	702,173	539,806	2.28	1.81	162,368	30.08	53.19	26.66
6 Únicas	0	0	0.00	0.00	0		0.00	0.00
7 Inbursa	798,137	1,106,649	2.59	3.71	(308,511)	(27.88)	63.71	16.53
7 1er Año	360,965	687,599	1.17	2.30	(326,634)	(47.50)	28.81	7.47
7 Renovación	437,172	419,050	1.42	1.40	18,122	4.32	34.89	9.05
7 Únicas	0	0	0.00	0.00	0		0.00	0.00
8 AXA Seguros	742,951	814,700	2.41	2.73	(71,749)	(8.81)	50.42	8.03
8 1er Año	135,860	149,460	0.44	0.50	(13,600)	(9.10)	9.22	1.47
8 Renovación	585,843	661,978	1.90	2.22	(76,136)	(11.50)	39.76	6.33
8 Únicas	21,248	3,261	0.07	0.01	17,987	551.51	1.44	0.23
9 HSBC Seguros	562,723	577,709	1.82	1.94	(14,985)	(2.59)	88.16	80.54
9 1er Año	193,672	193,046	0.63	0.65	626	0.32	30.34	27.72
9 Renovación	369,051	384,662	1.20	1.29	(15,611)	(4.06)	57.82	52.82
9 Únicas	0	0	0.00	0.00	0		0.00	0.00
10 Banorte	509,765	598,525	1.65	2.00	(88,760)	(14.83)	6.34	3.85
10 1er Año	359,289	288,474	1.16	0.97	70,815	24.55	4.47	2.71
10 Renovación	145,790	118,733	0.47	0.40	27,056	22.79	1.81	1.10
10 Únicas	4,686	191,317	0.02	0.64	(186,631)	(97.55)	0.06	0.04
11 Zurich Santander	444,252	469,939	1.44	1.57	(25,687)	(5.47)	44.37	26.42
11 1er Año	58,362	85,534	0.19	0.29	(27,172)	(31.77)	5.83	3.47
11 Renovación	223,540	270,904	0.72	0.91	(47,364)	(17.48)	22.32	13.29
11 Únicas	162,350	113,501	0.53	0.38	48,849	43.04	16.21	9.65
12 Patrimonial Inbursa	388,726	444,346	1.26	1.49	(55,619)	(12.52)	91.75	61.25
12 1er Año	388,726	444,346	1.26	1.49	(55,619)	(12.52)	91.75	61.25
12 Renovación	0	0	0.00	0.00	0		0.00	0.00
12 Únicas	0	0	0.00	0.00	0		0.00	0.00
13 Mapfre México	305,694	215,756	0.99	0.72	89,938	41.69	22.84	6.52
13 1er Año	138,212	24,301	0.45	0.08	113,911	468.75	10.33	2.95
13 Renovación	169,455	181,986	0.55	0.61	(12,531)	(6.89)	12.66	3.61
13 Únicas	(1,974)	9,468	-0.01	0.03	(11,442)	(120.85)	(0.15)	(0.04)
14 Seguros Argos	302,068	309,169	0.98	1.04	(7,101)	(2.30)	76.83	76.83
14 1er Año	22,929	38,018	0.07	0.13	(15,089)	(39.69)	5.83	5.83
14 Renovación	178,730	177,031	0.58	0.59	1,699	0.96	45.46	45.46
14 Únicas	100,409	94,120	0.33	0.32	6,289	6.68	25.54	25.54

Análisis de Primas Directas

Primer Trimestre 2018

EstadisticAMIS (Primas)

Vida Individual

Cifras en miles

	Compañías	Primas Directas		% Part. en Merc.		Incremento		% de Cartera	
		2018 Importe	2017 Importe	2018	2017	Importe	%	Por Operación	Total Cartera
15	Atlas	139,779	133,355	0.45	0.45	6,424	4.82	12.76	3.73
15	1er Año	33,524	35,696	0.11	0.12	(2,172)	(6.08)	3.06	0.89
15	Renovación	104,855	97,659	0.34	0.33	7,197	7.37	9.58	2.80
15	Únicas	1,399	0	0.00	0.00	1,399		0.13	0.04
	Medianas	5,411,327	6,046,824	17.54	20.25	(635,496)	(10.51)	31.87	12.95
	1er Año	2,206,599	2,783,346	7.15	9.32	(576,747)	(20.72)	13.00	5.28
	Renovación	2,916,610	2,851,810	9.46	9.55	64,800	2.27	17.18	6.98
	Únicas	288,118	411,668	0.93	1.38	(123,550)	(30.01)	1.70	0.69
16	Insignia Life	126,347	114,540	0.41	0.38	11,807	10.31	50.26	50.26
16	1er Año	31,657	44,399	0.10	0.15	(12,742)	(28.70)	12.59	12.59
16	Renovación	82,231	63,520	0.27	0.21	18,711	29.46	32.71	32.71
16	Únicas	12,458	6,620	0.04	0.02	5,838	88.19	4.96	4.96
17	Old Mutual Life	89,569	37,823	0.29	0.13	51,746	136.81	99.06	99.06
17	1er Año	55,945	11,464	0.18	0.04	44,481	387.99	61.88	61.88
17	Renovación	33,624	26,358	0.11	0.09	7,266	27.56	37.19	37.19
17	Únicas	0	0	0.00	0.00	0		0.00	0.00
18	Prudential	86,789	65,768	0.28	0.22	21,020	31.96	100.00	100.00
18	1er Año	25,182	21,145	0.08	0.07	4,037	19.09	29.02	29.02
18	Renovación	55,149	41,070	0.18	0.14	14,079	34.28	63.54	63.54
18	Únicas	6,457	3,553	0.02	0.01	2,904	81.72	7.44	7.44
19	Chubb de México	60,287	40,944	0.20	0.14	19,343	47.24	11.83	1.18
19	1er Año	60,287	40,944	0.20	0.14	19,343	47.24	11.83	1.18
19	Renovación	0	0	0.00	0.00	0		0.00	0.00
19	Únicas	0	0	0.00	0.00	0		0.00	0.00
20	SURA Vida	47,010	45,801	0.15	0.15	1,209	2.64	10.31	10.31
20	1er Año	11,520	9,950	0.04	0.03	1,570	15.78	2.53	2.53
20	Renovación	5,547	6,582	0.02	0.02	(1,035)	(15.73)	1.22	1.22
20	Únicas	29,943	29,269	0.10	0.10	674	2.30	6.57	6.57
21	Seguros Azteca	37,624	24,861	0.12	0.08	12,764	51.34	8.08	7.68
21	1er Año	0	0	0.00	0.00	0		0.00	0.00
21	Renovación	0	0	0.00	0.00	0		0.00	0.00
21	Únicas	37,624	24,861	0.12	0.08	12,764	51.34	8.08	7.68
22	General de Seguros	28,460	25,547	0.09	0.09	2,913	11.40	30.45	4.37
22	1er Año	11,077	10,089	0.04	0.03	988	9.79	11.85	1.70
22	Renovación	17,383	15,458	0.06	0.05	1,925	12.45	18.60	2.67
22	Únicas	0	0	0.00	0.00	0		0.00	0.00
23	Ve Por Más	19,399	(3,600)	0.06	-0.01	22,999	(638.82)	11.80	2.82
23	1er Año	844	616	0.00	0.00	229	37.17	0.51	0.12
23	Renovación	3,023	(4,216)	0.01	-0.01	7,239	(171.71)	1.84	0.44
23	Únicas	15,531	0	0.05	0.00	15,531	*	9.44	2.26
24	Zurich Vida	15,786	158,136	0.05	0.53	(142,350)	(90.02)	4.77	1.97
24	1er Año	231	59	0.00	0.00	172	294.06	0.07	0.03
24	Renovación	2,168	2,511	0.01	0.01	(343)	(13.66)	0.66	0.27
24	Únicas	13,387	155,566	0.04	0.52	(142,179)	(91.39)	4.05	1.67
25	Afirme	11,608	7,761	0.04	0.03	3,847	49.56	3.76	0.65
25	1er Año	11,608	7,761	0.04	0.03	3,847	49.56	3.76	0.65
25	Renovación	0	0	0.00	0.00	0		0.00	0.00
25	Únicas	0	0	0.00	0.00	0		0.00	0.00
26	El Potosi	10,508	14,179	0.03	0.05	(3,671)	(25.89)	7.89	2.50
26	1er Año	10,508	14,179	0.03	0.05	(3,671)	(25.89)	7.89	2.50
26	Renovación	0	0	0.00	0.00	0		0.00	0.00
26	Únicas	0	0	0.00	0.00	0		0.00	0.00
27	Seguros SURA	10,161	10,784	0.03	0.04	(624)	(5.78)	6.14	0.95
27	1er Año	3,900	2,441	0.01	0.01	1,459	59.79	2.36	0.37
27	Renovación	6,261	8,344	0.02	0.03	(2,083)	(24.96)	3.78	0.59
27	Únicas	0	0	0.00	0.00	0		0.00	0.00
28	Cardif Vida	7,067	7,061	0.02	0.02	6	0.09	1.93	1.92
28	1er Año	7,067	7,135	0.02	0.02	(69)	(0.96)	1.93	1.92
28	Renovación	0	0	0.00	0.00	0		0.00	0.00
28	Únicas	0	(75)	0.00	0.00	75	(100.00)	0.00	0.00

Análisis de Primas Directas

Primer Trimestre 2018

EstadisticAMIS (Primas)

Vida Individual

Cifras en miles

Compañías	Primas Directas		% Part. en Merc.		Incremento		% de Cartera	
	2018 Importe	2017 Importe	2018	2017	Importe	%	Por Operación	Total Cartera
29 La Latinoamericana	4,626	5,002	0.01	0.02	(376)	(7.52)	3.38	1.66
29 1er Año	546	379	0.00	0.00	167	44.01	0.40	0.20
29 Renovación	3,957	4,359	0.01	0.01	(402)	(9.22)	2.89	1.42
29 Únicas	123	265	0.00	0.00	(141)	(53.39)	0.09	0.04
30 Hir Seguros	1,859	2,452	0.01	0.01	(593)	(24.18)	0.36	0.36
30 1er Año	42	513	0.00	0.00	(471)	(91.80)	0.01	0.01
30 Renovación	1,817	1,939	0.01	0.01	(122)	(6.29)	0.35	0.35
30 Únicas	0	0	0.00	0.00	0		0.00	0.00
31 Interacciones	1,688	1,474	0.01	0.00	214	14.52	24.84	14.04
31 1er Año	9	47	0.00	0.00	(37)	(79.83)	0.14	0.08
31 Renovación	1,678	1,427	0.01	0.00	251	17.62	24.70	13.96
31 Únicas	0	0	0.00	0.00	0		0.00	0.00
32 Principal México	81	90	0.00	0.00	(9)	(9.96)	100.00	100.00
32 1er Año	78	87	0.00	0.00	(9)	(10.09)	96.84	96.84
32 Renovación	0	0	0.00	0.00	0		0.00	0.00
32 Únicas	3	3	0.00	0.00	0	(5.56)	3.16	3.16
33 Aserta Seguros de Vida	(12)	10	0.00	0.00	(21)	(221.37)	(0.01)	(0.01)
33 1er Año	(12)	10	0.00	0.00	(21)	(221.37)	(0.01)	(0.01)
33 Renovación	0	0	0.00	0.00	0		0.00	0.00
33 Únicas	0	0	0.00	0.00	0		0.00	0.00
Resto	558,854	558,631	1.81	1.87	223	0.04	13.16	4.23
1er Año	230,489	171,218	0.75	0.57	59,271	34.62	5.43	1.74
Renovación	212,838	167,352	0.69	0.56	45,486	27.18	5.01	1.61
Únicas	115,527	220,062	0.37	0.74	(104,535)	(47.50)	2.72	0.87
Total	30,842,611	29,854,883	100.00	100.00	987,729	3.31	51.83	27.48
1er Año	11,941,373	10,670,673	38.72	35.74	1,270,700	11.91	20.07	10.64
Renovación	14,916,506	14,553,713	48.36	48.75	362,793	2.49	25.07	13.29
Únicas	3,984,733	4,630,496	12.92	15.51	(645,763)	(13.95)	6.70	3.55

NE = No Existe

* % Extraordinario mayor de 1000%



Análisis de Primas Directas

Primer Trimestre 2018

EstadisticAMIS (Primas)

Vida Grupo

Cifras en miles

Compañías	Primas Directas		% Part. en Merc.		Incremento		% de Cartera	
	2018 Importe	2017 Importe	2018	2017	Importe	%	Por Operación	Total Cartera
1 Metlife Mexico	10,326,833	8,907,125	38.58	40.97	1,419,708	15.94	63.74	48.1
1 1er Año	3,988,602	3,731,742	14.90	17.17	256,860	6.88	24.62	18.58
1 Renovación	6,319,825	5,155,358	23.61	23.71	1,164,468	22.59	39.01	29.44
1 Únicas	18,406	20,026	0.07	0.09	(1,620)	(8.09)	0.11	0.09
2 Banorte	7,533,596	3,166,666	28.14	14.57	4,366,930	137.90	93.66	56.92
2 1er Año	596,708	414,901	2.23	1.91	181,807	43.82	7.42	4.51
2 Renovación	6,936,888	2,751,765	25.91	12.66	4,185,122	152.09	86.24	52.41
2 Únicas	0	0	0.00	0.00	0	0.00	0	0
3 BBVA Bancomer	1,091,909	1,392,454	4.08	6.41	(300,545)	(21.58)	20.22	14.54
3 1er Año	3,420	-37,356	0.01	(0.17)	40,776	(109.16)	0.06	0.05
3 Renovación	769,769	882,640	2.88	4.06	(112,871)	(12.79)	14.25	10.25
3 Únicas	318,721	547,171	1.19	2.52	(228,450)	(41.75)	5.9	4.24
4 Atlas	955,281	888,167	3.57	4.09	67,113	7.56	87.24	25.49
4 1er Año	514,859	62,362	1.92	0.29	452,497	725.59	47.02	13.74
4 Renovación	369,464	738,640	1.38	3.40	(369,176)	(49.98)	33.74	9.86
4 Únicas	70,957	87,165	0.27	0.40	(16,208)	(18.59)	6.48	1.89
5 AXA Seguros	665,500	554,788	2.49	2.55	110,712	19.96	45.16	7.19
5 1er Año	94,096	94,822	0.35	0.44	(726)	(0.77)	6.39	1.02
5 Renovación	571,404	459,966	2.13	2.12	111,438	24.23	38.78	6.17
5 Únicas	0	0	0.00	0.00	0	0.00	0	0
Grandes	20,573,119	14,909,201	76.85	68.58	5,663,917	37.99	63.86	37.26
1er Año	5,197,685	4,266,471	19.42	19.63	931,214	21.83	16.13	9.41
Renovación	14,967,349	9,988,368	55.91	45.94	4,978,981	49.85	46.46	27.11
Únicas	408,084	654,362	1.52	3.01	(246,278)	(37.64)	1.27	0.74
6 Zurich Santander	557,051	531,295	2.08	2.44	25,757	4.85	55.63	33.13
6 1er Año	28	1,568	0.00	0.01	(1,541)	(98.23)	0	0
6 Renovación	24,038	18,302	0.09	0.08	5,737	31.34	2.4	1.43
6 Únicas	532,985	511,424	1.99	2.35	21,561	4.22	53.23	31.7
7 Hir Seguros	517,401	498,930	1.93	2.29	18,472	3.70	99.64	99.46
7 1er Año	6,618	3,933	0.02	0.02	2,685	68.25	1.27	1.27
7 Renovación	510,784	494,996	1.91	2.28	15,787	3.19	98.37	98.19
7 Únicas	0	0	0.00	0.00	0	0.00	0	0
8 Inbursa	454,647	487,092	1.70	2.24	(32,446)	(6.66)	36.29	9.41
8 1er Año	454,647	487,092	1.70	2.24	(32,446)	(6.66)	36.29	9.41
8 Renovación	0	0	0.00	0.00	0	0.00	0	0
8 Únicas	0	0	0.00	0.00	0	0.00	0	0
9 Chubb de Mexico	449,151	329,122	1.68	1.51	120,028	36.47	88.17	8.82
9 1er Año	426,492	277,411	1.59	1.28	149,081	53.74	83.72	8.37
9 Renovación	22,658	51,711	0.08	0.24	(29,053)	(56.18)	4.45	0.44
9 Únicas	0	0	0.00	0.00	0	0.00	0	0
10 Seguros Azteca	428,202	483,524	1.60	2.22	(55,322)	(11.44)	91.92	87.41
10 1er Año	426,644	482,008	1.59	2.22	(55,364)	(11.49)	91.59	87.09
10 Renovación	1,558	1,516	0.01	0.01	42	2.77	0.33	0.32
10 Únicas	0	0	0.00	0.00	0	0.00	0	0
11 SURA Vida	409,055	446,210	1.53	2.05	(37,156)	(8.33)	89.69	89.69
11 1er Año	501,379	469,209	1.87	2.16	32,170	6.86	109.94	109.93
11 Renovación	-92324	-22999	(0.34)	(0.11)	(69,325)	301.43	-20.24	-20.24
11 Únicas	0	0	0.00	0.00	0	0.00	0	0
12 Mapfre Mexico	401,568	379,501	1.50	1.75	22,067	5.81	30	8.56
12 1er Año	401,568	379,501	1.50	1.75	22,067	5.81	30	8.56
12 Renovación	0	0	0.00	0.00	0	0.00	0	0
12 Únicas	0	0	0.00	0.00	0	0.00	0	0
13 G.N.P.	388,156	794,094	1.45	3.65	(405,938)	(51.12)	7.43	2.74
13 1er Año	386,753	733,450	1.44	3.37	(346,696)	(47.27)	7.4	2.73
13 Renovación	1,403	60,644	0.01	0.28	(59,242)	0.00	0.03	0.01
13 Únicas	0	0	0.00	0.00	0	0.00	0	0
14 Monterrey New York Life	380,394	425,612	1.42	1.96	(45,218)	(10.62)	8.04	5.41
14 1er Año	18,714	31,482	0.07	0.14	(12,769)	(40.56)	0.4	0.27
14 Renovación	361,681	394,130	1.35	1.81	(32,449)	(8.23)	7.64	5.14
14 Únicas	0	0	0.00	0.00	0	0.00	0	0

Análisis de Primas Directas		EstadisticAMIS (Primas)						Primer Trimestre 2018	
Vida Grupo									
Cifras en miles									
Compañías		Primas Directas		% Part. en Merc.		Incremento		% de Cartera	
		2018 Importe	2017 Importe	2018	2017	Importe	%	Por Operación	Total Cartera
15	Cardif Vida	357,246	386,952	1.33	1.78	(29,705)	(7.68)	97.39	97.06
15	1er Año	173,112	161,608	0.65	0.74	11,504	7.12	47.19	47.03
15	Renovación	101,447	134,492	0.38	0.62	(33,045)	(24.57)	27.66	27.56
15	Únicas	82,688	90,852	0.31	0.42	(8,164)	(8.99)	22.54	22.47
	Medianas	4,342,871	4,762,332	16.22	21.91	(419,461)	(8.81)	27.37	11.04
	1er Año	2,795,955	3,027,263	10.44	13.92	(231,308)	(7.64)	17.62	7.11
	Renovación	931,244	1,132,793	3.48	5.21	(201,549)	(17.79)	5.87	2.37
	Únicas	615,673	602,276	2.30	2.77	13,397	2.22	3.88	1.57
16	Zurich Vida	315,102	340,714	1.18	1.57	(25,611)	(7.52)	95.23	39.4
16	1er Año	33,267	84,568	0.12	0.39	(51,302)	(60.66)	10.05	4.16
16	Renovación	124,527	81,925	0.47	0.38	42,603	52.00	37.63	15.57
16	Únicas	157,308	174,221	0.59	0.80	(16,913)	(9.71)	47.54	19.67
17	Afirme	297,266	241,771	1.11	1.11	55,494	22.95	96.24	16.74
17	1er Año	297,266	241,771	1.11	1.11	55,494	22.95	96.24	16.74
17	Renovación	0	0	0.00	0.00	0	0.00	0	0
17	Únicas	0	0	0.00	0.00	0	0.00	0	0
18	Assurant Vida	282,270	269,544	1.05	1.24	12,726	4.72	100	100
18	1er Año	234,523	226,382	0.88	1.04	8,141	3.60	83.08	83.08
18	Renovación	47,747	43,162	0.18	0.20	4,585	10.62	16.92	16.92
18	Únicas	0	0	0.00	0.00	0	0.00	0	0
19	Aserta Seguros de Vida	159,448	59,124	0.60	0.27	100,324	169.68	100.01	99.35
19	1er Año	111,556	18,636	0.42	0.09	92,919	498.59	69.97	69.51
19	Renovación	32,387	31,727	0.12	0.15	661	2.08	20.31	20.18
19	Únicas	15505	8761	0.06	0.04	6,744	76.98	9.72	9.66
20	Ve Por Más	145,058	122,084	0.54	0.56	22,974	18.82	88.2	21.11
20	1er Año	9,194	108,763	0.03	0.50	(99,569)	(91.55)	5.59	1.34
20	Renovación	135,864	13,321	0.51	0.06	122,543	919.91	82.61	19.78
20	Únicas	0	0	0.00	0.00	0	0.00	0	0
21	El Potosí	122,716	151,858	0.46	0.70	(29,143)	(19.19)	92.11	29.21
21	1er Año	122,716	151,858	0.46	0.70	(29,143)	(19.19)	92.11	29.21
21	Renovación	0	0	0.00	0.00	0	0.00	0	0
21	Únicas	0	0	0.00	0.00	0	0.00	0	0
22	Seguros Argos	91,079	111,074	0.34	0.51	(19,995)	(18.00)	23.17	23.17
22	1er Año	11,405	19,072	0.04	0.09	(7,667)	(40.20)	2.9	2.9
22	Renovación	78,333	91,071	0.29	0.42	(12,738)	(13.99)	19.92	19.92
22	Únicas	1341	932	0.01	0.00	410	43.96	0.34	0.34
23	Seguros SURA	84,439	50,623	0.32	0.23	33,816	66.80	51.01	7.9
23	1er Año	80,613	45,142	0.30	0.21	35,471	78.58	48.7	7.54
23	Renovación	3,826	5,481	0.01	0.03	(1,654)	(30.19)	2.31	0.36
23	Únicas	0	0	0.00	0.00	0	0.00	0	0
24	HSBC Seguros	75,589	69,571	0.28	0.32	6,018	8.65	11.84	10.82
24	1er Año	75,606	70,560	0.28	0.32	5,047	7.15	11.84	10.82
24	Renovación	-18	-989	0.00	0.00	971	(98.20)	0	0
24	Únicas	0	0	0.00	0.00	0	0.00	0	0
25	Allianz Mexico	70,750	59,723	0.26	0.27	11,027	18.46	5.36	2.69
25	1er Año	13,371	12,511	0.05	0.06	860	6.87	1.01	0.51
25	Renovación	57,379	47,212	0.21	0.22	10,167	21.54	4.35	2.18
25	Únicas	0	0	0.00	0.00	0	0.00	0	0
26	Patrimonial Vida	70,266	126,628	0.26	0.58	(56,362)	(44.51)	100	100
26	1er Año	70,266	126,628	0.26	0.58	(56,362)	(44.51)	100	100
26	Renovación	0	0	0.00	0.00	0	0.00	0	0
26	Únicas	0	0	0.00	0.00	0	0.00	0	0
27	General de Seguros	65,015	254,563	0.24	1.17	(189,548)	(74.46)	69.55	9.97
27	1er Año	46,398	241,233	0.17	1.11	(194,835)	(80.77)	49.64	7.12
27	Renovación	18,617	13,330	0.07	0.06	5,287	39.67	19.92	2.86
27	Únicas	0	0	0.00	0.00	0	0.00	0	0
28	Patrimonial Inbursa	34,943	38,072	0.13	0.18	(3,128)	(8.22)	8.25	5.51
28	1er Año	34,943	38,072	0.13	0.18	(3,128)	(8.22)	8.25	5.51
28	Renovación	0	0	0.00	0.00	0	0.00	0	0
28	Únicas	0	0	0.00	0.00	0	0.00	0	0

Estadística AMIS (Primas)

Vida Grupo

Cifras en miles

Compañías		Primas Directas		% Part. en Merc.		Incremento		% de Cartera	
		2018 Importe	2017 Importe	2018	2017	Importe	%	Por Operación	Total Cartera
29	Tokio Marine	26,352	41,320	0.10	0.19	(14,968)	(36.22)	100	13.73
29	1er Año	17,103	35,663	0.06	0.16	(18,559)	(52.04)	64.9	8.91
29	Renovación	9,249	5,657	0.03	0.03	3,592	63.49	35.1	4.82
29	Únicas	0	0	0.00	0.00	0	0.00	0	0
30	Interacciones	5,107	2,408	0.02	0.01	2,699	112.11	75.16	42.47
30	1er Año	-10	-210	0.00	0.00	201	(95.46)	-0.14	-0.08
30	Renovación	5,117	2,618	0.02	0.01	2,499	95.45	75.3	42.55
30	Únicas	0	0	0.00	0.00	0	0.00	0	0
31	Insignia Life	3,588	74,689	0.01	0.34	(71,101)	(95.20)	1.43	1.43
31	1er Año	-4,277	61,869	(0.02)	0.28	(66,146)	(106.91)	-1.7	-1.7
31	Renovación	7,865	12,820	0.03	0.06	(4,955)	(38.65)	3.13	3.13
31	Únicas	0	0	0.00	0.00	0	0.00	0	0
32	Agroasemex	2,098	995	0.01	0.00	1,103	110.93	100	0.4
32	1er Año	2,098	995	0.01	0.00	1,103	110.93	100	0.4
32	Renovación	0	0	0.00	0.00	0	0.00	0	0
32	Únicas	0	0	0.00	0.00	0	0.00	0	0
33	HDI Seguros	1,088	1,274	0.00	0.01	(186)	(14.58)	100	0.05
33	1er Año	0	0	0.00	0.00	0	0.00	0	0
33	Renovación	1,088	1,274	0.00	0.01	(186)	(14.58)	100	0.05
33	Únicas	0	0	0.00	0.00	0	0.00	0	0
34	Old Mutual Life	846	584	0.00	0.00	263	45.00	0.94	0.94
34	1er Año	0	0	0.00	0.00	0	0.00	0	0
34	Renovación	846	584	0.00	0.00	263	45.00	0.94	0.94
34	Únicas	0	0	0.00	0.00	0	0.00	0	0
35	Citibanamex Seguros	21	72	0.00	0.00	(52)	(71.38)	0	0
35	1er Año	28	62	0.00	0.00	(34)	(54.87)	0	0
35	Renovación	-7	10	0.00	0.00	(18)	(170.38)	0	0
35	Únicas	0	0	0.00	0.00	0	0.00	0	0
	Resto	1,853,041	2,016,690	6.92	9.28	(163,649)	(8.11)	16	9.03
	1er Año	1,156,065	1,483,575	4.32	6.82	(327,510)	(22.08)	9.98	5.63
	Renovación	522,821	349,201	1.95	1.61	173,620	49.72	4.52	2.55
	Únicas	174,155	183,913	0.65	0.85	(9,759)	(5.31)	1.5	0.85
	Total	26,769,031	21,688,223	100	99.76	5,080,808	23.43	44.87	23.26
	1er Año	9,149,705	8,777,309	34.18	40.37	372,396	4.24	15.34	7.95
	Renovación	16,421,414	11,470,362	61.34	52.76	4,951,052	43.16	27.52	14.27
	Únicas	1,197,912	1,440,552	4.47	6.63	-242,640	(16.84)	2.01	1.04

NE = No Existe

* % Extraordinario mayor de 1000%



Análisis de Primas Directas		EstadisticAMIS (Primas)						Primer Trimestre 2018	
Vida Colectivo									
Cifras en miles									
Compañías	Primas Directas		% Part. en Merc.		Incremento		% de Cartera		
	2018 Importe	2017 Importe	2018	2017	Importe	%	Por Operación	Total Cartera	
1	Citibanamex Seguros	823,664	851,698	36.25	44.55	(28,034)	(3.29)	12.26	11.69
1	1er Año	7	3	0.00	0.00	4	142.86	0	0
1	Renovación	823,657	851,695	36.25	44.55	(28,038)	(3.29)	12.26	11.69
1	Únicas	0	0	0.00	0.00	0		0	0
2	Mapfre México	631,254	576,606	27.78	30.16	54,648	9.48	47.16	13.46
2	1er Año	631,254	576,606	27.78	30.16	54,648	9.48	47.16	13.46
2	Renovación	0	0	0.00	0.00	0		0	0
2	Únicas	0	0	0.00	0.00	0		0	0
3	G.N.P.	386,051	1	16.99	0.00	386,050	*	7.39	2.73
3	1er Año	386,012	0	16.99	0.00	386,012		7.39	2.73
3	Renovación	0	2	0.00	0.00	(2)	(100.00)	0	0
3	Únicas	39	-1	0.00	0.00	40	*	0	0
4	La Latinoamericana	132,260	159,329	5.82	8.33	(27,069)	(16.99)	96.62	47.56
4	1er Año	43,040	49,480	1.89	2.59	(6,440)	(13.01)	31.44	15.48
4	Renovación	89,220	109,849	3.93	5.75	(20,629)	(18.78)	65.18	32.08
4	Únicas	0	0	0.00	0.00	0		0	0
5	Insignia Life	121,442	8,064	5.34	0.42	113,377	*	48.31	48.31
5	1er Año	121,420	6,882	5.34	0.36	114,538	*	48.3	48.3
5	Renovación	22	1,182	0.00	0.06	(1,160)	(98.17)	0.01	0.01
5	Únicas	0	0	0.00	0.00	0		0	0
6	Grandes	2,094,671	1,595,699	92.19	83.47	498,973	31.27	15.33	7.93
6	1er Año	1,181,733	632,971	52.01	33.11	548,762	86.70	8.65	4.47
6	Renovación	912,899	962,729	40.18	50.36	(49,830)	(5.18)	6.68	3.45
6	Únicas	39	-1	0.00	0.00	40	*	0	0
6	Seguros SURA	70,930	43,981	3.12	2.30	26,949	61.27	42.85	6.64
6	1er Año	34,679	14,143	1.53	0.74	20,536	145.20	20.95	3.25
6	Renovación	36,251	29,838	1.60	1.56	6,413	21.49	21.9	3.39
6	Únicas	0	0	0.00	0.00	0		0	0
7	AXA Seguros	65,099	67,882	2.87	3.55	(2,783)	(4.10)	4.42	0.7
7	1er Año	-12	-484	0.00	(0.03)	472	(97.55)	0	0
7	Renovación	65,111	68,366	2.87	3.58	(3,255)	(4.76)	4.42	0.7
7	Únicas	0	0	0.00	0.00	0		0	0
8	Allianz México	32,148	186,559	1.41	9.76	(154,411)	(82.77)	2.44	1.22
8	1er Año	32,148	186,559	1.41	9.76	(154,411)	(82.77)	2.44	1.22
8	Renovación	0	0	0.00	0.00	0		0	0
8	Únicas	0	0	0.00	0.00	0		0	0
9	Monterrey New York Life	6,751	13,096	0.30	0.69	(6,345)	(48.45)	0.14	0.1
9	1er Año	25	9,569	0.00	0.50	(9,545)	(99.74)	0	0
9	Renovación	6,727	3,527	0.30	0.18	3,199	90.70	0.14	0.1
9	Únicas	0	0	0.00	0.00	0		0	0
10	Cardif Vida	2,510	4,503	0.11	0.24	(1,993)	(44.26)	0.68	0.68
10	1er Año	0	0	0.00	0.00	0		0	0
10	Renovación	2,510	4,503	0.11	0.24	(1,993)	(44.26)	0.68	0.68
10	Únicas	0	0	0.00	0.00	0		0	0
11	Inbursa	52	73	0.00	0.00	(20)	(27.81)	0	0
11	1er Año	52	73	0.00	0.00	(20)	(27.81)	0	0
11	Renovación	0	0	0.00	0.00	0		0	0
11	Únicas	0	0	0.00	0.00	0		0	0
	Medianas	177,491	316,094	7.81	16.53	(138,603)	(43.85)	1.91	0.7
	1er Año	66,893	209,860	2.94	10.98	(142,967)	(68.13)	0.72	0.27
	Renovación	110,598	106,234	4.87	5.56	4,364	4.11	1.19	0.44
	Únicas	0	0	0.00	0.00	0		0	0
	Total	2,272,162	1,911,792	100	100	360,370	18.85	9.89	4.4
	1er Año	1,248,626	842,831	54.95	44.09	405,795	48.15	5.43	2.42
	Renovación	1,023,497	1,068,962	45.05	55.91	(45,465)	(4.25)	4.45	1.98
	Únicas	39	-1	0.00	0.00	40	*	0	0

NE = No Existe

* % Extraordinario mayor de 1000%



Análisis de Primas Directas		EstadisticAMIS (Primas)				Primer Trimestre 2018	
		Pensiones Total					
Compañías		Primas Directas		% Part. en Merc.		Incremento	
		2018 Importe	2017 Importe	2018	2017	Importe	%
1	Pensiones Banorte	2,349,938	1,978,535	36.77	37.94	371,403	18.77
2	Pensiones BBVA Bancomer	2,187,507	1,903,137	34.23	36.49	284,370	14.94
3	ProFuturo G.N.P.	1,342,905	954,706	21.02	18.31	388,199	40.66
4	Pensiones SURA	499,270	363,438	7.81	6.97	135,833	37.37
5	HSBC Pensiones	4,118	989	0.06	0.02	3,129	316.42
	Grandes	6,383,739	5,200,805	99.9	99.73	1,182,934	22.75
6	Pensiones Inbursa	3,337	5,098	0.05	0.10	(1,761)	(34.54)
7	Citibanamex Pensiones	2,391	6,108	0.04	0.12	(3,716)	(60.85)
8	Metlife Pensiones	742	2,404	0.01	0.05	(1,662)	(69.14)
9	Principal Pensiones	0	512	0.00	0.01	(512)	(100.00)
	Medianas	6,470	14,122	0.1	0.27	(7,652)	(54.18)
	Total	6,390,210	5,214,927	100.0	100.0	1,175,282	22.54

Análisis de Primas Directas		EstadisticAMIS (Primas)				Primer Trimestre 2018	
		Pensiones IMSS					
Compañías		Primas Directas		% Part. en Merc.		Incremento	
		2018 Importe	2017 Importe	2018	2017	Importe	%
1	Pensiones Banorte	1,682,187	1,319,393	39.72	43.57	362,794	27.50
2	Pensiones BBVA Bancomer	1,612,647	1,090,171	38.08	36.00	522,475	47.93
3	ProFuturo G.N.P.	676,636	470,155	15.98	15.53	206,481	43.92
4	Pensiones SURA	253,358	133,312	5.98	4.40	120,046	90.05
5	HSBC Pensiones	4,118	989	0.10	0.03	3,129	316.42
	Grandes	4,228,945	3,014,020	99.85	99.53	1,214,925	40.31
6	Pensiones Inbursa	3,337	5,098	0.08	0.17	(1,761)	(34.54)
7	Citibanamex Pensiones	2,391	6,108	0.06	0.20	(3,716)	(60.85)
8	Metlife Pensiones	742	2,404	0.02	0.08	(1,662)	(69.14)
9	Principal Pensiones	0	512	0.00	0.02	(512)	(100.00)
	Medianas	6,470	14,122	0.15	0.47	(7,652)	(54.18)
	Total	4,235,416	3,028,143	100.0	100.0	1,207,273	39.87

Análisis de Primas Directas		EstadisticAMIS (Primas)				Primer Trimestre 2018	
		Pensiones Incapacidad Permanente (Riesgos de Trabajo) IMSS					
Compañías		Primas Directas		% Part. en Merc.		Incremento	
		2018 Importe	2017 Importe	2018	2017	Importe	%
1	Pensiones BBVA Bancomer	339,691	189,084	47.74	43.81	150,607	79.65
2	Pensiones Banorte	210,558	152,459	29.59	35.32	58,099	38.11
3	ProFuturo G.N.P.	160,078	89,116	22.50	20.65	70,962	79.63
4	Pensiones SURA	1,001	0	0.14	0.00	1,001	100.00
5	Pensiones Inbursa	129	111	0.02	0.03	18	16.32
	Grandes	711,457	430,770	99.99	99.8	280,687	65.16
6	Citibanamex Pensiones	69	143	0.01	0.03	(73)	(51.46)
7	HSBC Pensiones	37	41	0.01	0.01	(4)	(10.95)
8	Principal Pensiones	0	512	0.00	0.12	(512)	(100.00)
9	Metlife Pensiones	0	179	0.00	0.04	(179)	(100.00)
	Medianas	106	875	0.01	0.2	(769)	(87.90)
	Total	711,563	431,645	100.0	100.0	279,918	64.85

NE = No Existe

*% Extraordinario mayor de 1000%



Análisis de Primas Directas		EstadisticAMIS (Primas)				Primer Trimestre 2018	
		Pensiones Muerte (Riesgos de Trabajo) IMSS				Cifras en miles	
Compañías		Primas Directas		% Part. en Merc.		Incremento	
		2018 Importe	2017 Importe	2018	2017	Importe	%
1	Pensiones Banorte	117,290	81,410	53.53	42.91	35,880	44.07
2	Pensiones BBVA Bancomer	69,639	78,375	31.78	41.31	(8,736)	(11.15)
3	ProFuturo G.N.P.	29,827	26,247	13.61	13.83	3,580	13.64
4	Pensiones SURA	2,128	3,628	0.97	1.91	(1,501)	(41.36)
5	Pensiones Inbursa	244	0	0.11	0.00	244	*
	Grandes	219,127	189,660	100.0	99.96	29,467	15.54
6	Citibanamex Pensiones	0	80	0.00	0.04	(80)	(100.00)
	Medianas	0	80	0.0	0.04	(80)	(100.00)
	Total	219,127	189,740	100.00	100.00	29,387	15.49

Análisis de Primas Directas		EstadisticAMIS (Primas)				Primer Trimestre 2018	
		Pensiones Invalidez (Invalidez y Vida) IMSS				Cifras en miles	
Compañías		Primas Directas		% Part. en Merc.		Incremento	
		2018 Importe	2017 Importe	2018	2017	Importe	%
1	Pensiones Banorte	560,173	325,908	47.67	44.36	234,265	71.88
2	Pensiones BBVA Bancomer	431,955	285,297	36.76	38.84	146,658	51.41
3	ProFuturo G.N.P.	128,236	93,965	10.91	12.79	34,271	36.47
4	Pensiones SURA	46,935	19,364	3.99	2.64	27,571	142.38
5	HSBC Pensiones	4,082	948	0.35	0.13	3,134	330.60
	Grandes	1,171,381	725,482	99.68	98.76	445,900	61.46
6	Pensiones Inbursa	2,949	4,987	0.25	0.68	(2,038)	(40.86)
7	Metlife Pensiones	458	1,360	0.04	0.19	(902)	(66.32)
8	Citibanamex Pensiones	391	2,789	0.03	0.38	(2,398)	(85.97)
	Medianas	3,799	9,137	0.32	1.24	(5,338)	(58.42)
	Total	1,175,180	734,618	100.00	100.00	440,562	59.97

Análisis de Primas Directas		EstadisticAMIS (Primas)				Primer Trimestre 2018	
		Pensiones Muerte (Invalidez y Vida) IMSS				Cifras en miles	
Compañías		Primas Directas		% Part. en Merc.		Incremento	
		2018 Importe	2017 Importe	2018	2017	Importe	%
1	Pensiones Banorte	785,379	751,264	37.69	45.97	34,115	4.54
2	Pensiones BBVA Bancomer	761,917	529,760	36.56	32.41	232,157	43.82
3	ProFuturo G.N.P.	357,129	258,874	17.14	15.84	98,255	37.95
4	Pensiones SURA	177,234	90,509	8.50	5.54	86,725	95.82
5	Citibanamex Pensiones	1,931	3,096	0.09	0.19	(1,166)	(37.65)
	Grandes	2,083,590	1,633,503	99.99	99.95	450,087	27.55
6	Metlife Pensiones	284	865	0.01	0.05	(581)	(67.19)
7	Pensiones Inbursa	15	0	0.00	0.00	15	*
	Medianas	299	865	0.01	0.05	(566)	(65.43)
	Total	2,083,889	1,634,368	100.00	100.00	449,521	27.50

NE = No Existe

* % Extraordinario mayor de 1000%



Análisis de Primas Directas		Primer Trimestre 2018					
EstadisticAMIS (Primas)							
Pensiones Jubilación (Retiro, Cesantía y Vejez) IMSS							
Cifras en miles							
Compañías		Primas Directas		% Part. en Merc.		Incremento	
		2018 Importe	2017 Importe	2018	2017	Importe	%
1	Pensiones SURA	26,060	19,811	57.08	52.45	6,250	31.55
2	Pensiones BBVA Bancomer	9,444	7,656	20.68	20.27	1,788	23.35
3	Pensiones Banorte	8,787	8,352	19.25	22.11	436	5.21
4	ProFuturo G.N.P.	1,365	1,953	2.99	5.17	(588)	(30.12)
	Grandes	45,656	37,772	100.00	100.00	7,885	20.87
	Total	45,656	37,772	100.00	100.00	7,885	20.87

Análisis de Primas Directas		Primer Trimestre 2018					
EstadisticAMIS (Primas)							
Pensiones ISSSTE							
Cifras en miles							
Compañías		Primas Directas		% Part. en Merc.		Incremento	
		2018 Importe	2017 Importe	2018	2017	Importe	%
1	Pensiones Banorte	667,752	659,142	30.99	30.14	8,610	1.31
2	ProFuturo G.N.P.	666,269	484,551	30.92	22.16	181,718	37.50
3	Pensiones BBVA Bancomer	574,861	812,966	26.68	37.18	(238,106)	(29.29)
4	Pensiones SURA	245,912	230,125	11.41	10.52	15,787	6.86
	Grandes	2,154,794	2,186,785	100.00	100.00	(31,991)	(1.46)
	Total	2,154,794	2,186,785	100.00	100.00	(31,991)	(1.46)

Análisis de Primas Directas		Primer Trimestre 2018					
EstadisticAMIS (Primas)							
Pensiones Incapacidad Permanente (Riesgos de Trabajo) ISSSTE							
Cifras en miles							
Compañías		Primas Directas		% Part. en Merc.		Incremento	
		2018 Importe	2017 Importe	2018	2017	Importe	%
1	Pensiones BBVA Bancomer	69,418	68,494	43.29	41.71	924	1.35
2	Pensiones Banorte	50,780	76,786	31.67	46.76	(26,006)	(33.87)
3	ProFuturo G.N.P.	38,394	18,918	23.94	11.52	19,476	102.95
4	Pensiones SURA	1,767	0	1.10	0.00	1,767	*
	Grandes	160,359	164,198	100.00	100.00	(3,840)	(2.34)
	Total	160,359	164,198	100.00	100.00	(3,840)	(2.34)

NE = No Existe

* % Extraordinario mayor de 1000%



Análisis de Primas Directas		Primer Trimestre 2018					
EstadisticAMIS (Primas)							
Pensiones Muerte (Riesgos de Trabajo) ISSSTE							
Cifras en miles							
Compañías	Primas Directas		% Part. en Merc.		Incremento		
	2018	2017	2018	2017	Importe	%	
		Importe					
1	Pensiones Banorte	168,856	140,645	35.54	29.32	28,211	20.06
2	Pensiones BBVA Bancomer	152,741	206,491	32.14	43.04	(53,750)	(26.03)
3	ProFuturo G.N.P.	101,449	52,068	21.35	10.85	49,381	94.84
4	Pensiones SURA	52,133	80,555	10.97	16.79	(28,423)	(35.28)
	Total Grandes	475,178	479,759	100.00	100.00	(4,581)	(0.95)
	Total del Ramo	475,178	479,759	100.00	100.00	(4,581)	(0.95)

Análisis de Primas Directas		Primer Trimestre 2018					
EstadisticAMIS (Primas)							
Pensiones Invalidez (Invalidez y Vida) ISSSTE							
Cifras en miles							
Compañías	Primas Directas		% Part. en Merc.		Incremento		
	2018	2017	2018	2017	Importe	%	
		Importe					
1	Pensiones Banorte	16,255	15,616	39.41	40.68	639	4.09
2	Pensiones BBVA Bancomer	15,892	13,128	38.53	34.20	2,764	21.06
3	ProFuturo G.N.P.	9,096	7,477	22.06	19.48	1,620	21.66
4	Pensiones SURA	0	2,166	0.00	5.64	(2,166)	(100.00)
	Grandes	41,243	38,386	100.00	100.00	2,857	7.44
	Total	41,243	38,386	100.00	100.00	2,857	7.44

Análisis de Primas Directas		Primer Trimestre 2018					
EstadisticAMIS (Primas)							
Pensiones Muerte (Invalidez y Vida) ISSSTE							
Cifras en miles							
Compañías	Primas Directas		% Part. en Merc.		Incremento		
	2018	2017	2018	2017	Importe	%	
		Importe					
1	Pensiones Banorte	111,032	118,182	36.98	38.87	(7,150)	(6.05)
2	Pensiones BBVA Bancomer	110,940	130,928	36.94	43.06	(19,987)	(15.27)
3	ProFuturo G.N.P.	54,350	27,739	18.10	9.12	26,611	95.94
4	Pensiones SURA	23,968	27,219	7.98	8.95	(3,251)	(11.94)
	Grandes	300,290	304,067	100.00	100.00	(3,777)	(1.24)
	Total	300,290	304,067	100.00	100.00	(3,777)	(1.24)

Análisis de Primas Directas		Primer Trimestre 2018					
EstadisticAMIS (Primas)							
Pensiones Jubilación (Retiro, Cesantía y Vejez) ISSSTE							
Cifras en miles							
Compañías	Primas Directas		% Part. en Merc.		Incremento		
	2018	2017	2018	2017	Importe	%	
		Importe					
1	ProFuturo G.N.P.	529,485	415,689	35.11	26.46	113,796	27.38
2	Pensiones Banorte	426,469	427,996	28.28	27.25	(1,527)	(0.36)
3	Pensiones BBVA Bancomer	337,007	544,690	22.35	34.68	(207,683)	(38.13)
4	Pensiones SURA	214,924	182,393	14.25	11.61	32,531	17.84
	Grandes	1,507,885	1,570,768	100.00	100.00	(62,884)	(4.00)
	Total	1,507,885	1,570,768	100.00	100.00	(62,884)	(4.00)

NE = No Existe

* % Extraordinario mayor de 1000%



Análisis de Primas Directas **Primer Trimestre 2018**

EstadisticAMIS (Primas)

Accidentes y Enfermedades Total

Cifras en miles

Compañías		Primas Directas		% Part. en Merc.		Incremento		% de Cartera	
		2018 Importe	2017 Importe	2018	2017	Importe	%	Por Operación	Total Cartera
1	Metlife México	5,266,204	4,696,083	22.34	22.36	570,121	12.14	100.00	24.53
1	Accidentes Personales	4,632	4,453	0.02	0.02	179	4.02	0.09	0.02
1	Gastos Medicos	5,261,572	4,691,630	22.32	22.34	569,942	12.15	99.91	24.51
1	Salud	0	0	0.00	0.00	0		0.00	0.00
2	G.N.P.	4,921,507	4,800,040	20.88	22.86	121,467	2.53	100.00	34.75
2	Accidentes Personales	22,649	20,730	0.10	0.10	1,920	9.26	0.46	0.16
2	Gastos Medicos	4,898,858	4,779,310	20.78	22.76	119,548	2.50	99.54	34.59
2	Salud	0	0	0.00	0.00	0		0.00	0.00
3	AXA Seguros	3,600,997	2,704,417	15.28	12.88	896,580	33.15	100.00	38.91
3	Accidentes Personales	59,063	88,765	0.25	0.42	(29,702)	(33.46)	1.64	0.64
3	Gastos Medicos	3,541,934	2,615,653	15.02	12.45	926,282	35.41	98.36	38.27
3	Salud	0	0	0.00	0.00	0		0.00	0.00
4	Monterrey New York Life	2,300,932	2,415,144	9.76	11.50	(114,212)	(4.73)	100.00	32.71
4	Accidentes Personales	38,165	41,054	0.16	0.20	(2,889)	(7.04)	1.66	0.54
4	Gastos Medicos	2,262,767	2,374,090	9.60	11.30	(111,323)	(4.69)	98.34	32.17
4	Salud	0	0	0.00	0.00	0		0.00	0.00
5	Atlas	1,012,017	866,694	4.29	4.13	145,324	16.77	100.00	27.00
5	Accidentes Personales	171,636	164,324	0.73	0.78	7,312	4.45	16.96	4.58
5	Gastos Medicos	840,381	702,370	3.56	3.34	138,011	19.65	83.04	22.42
5	Salud	0	0	0.00	0.00	0		0.00	0.00
	Grandes	17,101,656	15,482,377	72.54	73.72	1,619,280	10.46	100.00	30.72
	Accidentes Personales	296,145	319,325	1.26	1.52	(23,180)	(7.26)	1.73	0.53
	Gastos Medicos	16,805,512	15,163,052	71.29	72.20	1,642,460	10.83	98.27	30.19
	Salud	0	0	0.00	0.00	0		0.00	0.00
6	Banorte	994,104	794,067	4.22	3.78	200,036	25.19	100.00	7.51
6	Accidentes Personales	126,942	128,092	0.54	0.61	(1,150)	(0.90)	12.77	0.96
6	Gastos Medicos	867,162	665,975	3.68	3.17	201,187	30.21	87.23	6.55
6	Salud	0	0	0.00	0.00	0		0.00	0.00
7	Inbursa	672,699	656,539	2.85	3.13	16,160	2.46	100.00	13.93
7	Accidentes Personales	11,528	11,282	0.05	0.05	246	2.18	1.71	0.24
7	Gastos Medicos	661,171	645,257	2.80	3.07	15,913	2.47	98.29	13.69
7	Salud	0	0	0.00	0.00	0		0.00	0.00
8	Mapfre México	648,269	494,457	2.75	2.35	153,812	31.11	100.00	13.83
8	Accidentes Personales	19,079	26,248	0.08	0.12	(7,168)	(27.31)	2.94	0.41
8	Gastos Medicos	629,189	468,209	2.67	2.23	160,980	34.38	97.06	13.42
8	Salud	0	0	0.00	0.00	0		0.00	0.00
9	Allianz México	592,507	524,181	2.51	2.50	68,326	13.03	100.00	22.50
9	Accidentes Personales	480	345	0.00	0.00	134	38.91	0.08	0.02
9	Gastos Medicos	592,027	523,836	2.51	2.49	68,191	13.02	99.92	22.48
9	Salud	0	0	0.00	0.00	0		0.00	0.00
10	Plan Seguro	550,654	424,160	2.34	2.02	126,494	29.82	100.00	100.00
10	Accidentes Personales	0	0	0.00	0.00	0		0.00	0.00
10	Gastos Medicos	262,956	213,541	1.12	1.02	49,414	23.14	47.75	47.75
10	Salud	287,698	210,619	1.22	1.00	77,080	36.60	52.25	52.25
11	BUPA México	502,544	348,829	2.13	1.66	153,715	44.07	100.00	100.00
11	Accidentes Personales	0	0	0.00	0.00	0		0.00	0.00
11	Gastos Medicos	502,544	348,829	2.13	1.66	153,715	44.07	100.00	100.00
11	Salud	0	0	0.00	0.00	0		0.00	0.00
12	Zurich Vida	468,952	326,382	1.99	1.55	142,570	43.68	100.00	58.63
12	Accidentes Personales	1,111	876	0.00	0.00	235	26.78	0.24	0.14
12	Gastos Medicos	467,841	325,506	1.98	1.55	142,336	43.73	99.76	58.49
12	Salud	0	0	0.00	0.00	0		0.00	0.00

Análisis de Primas Directas **Primer Trimestre 2018**

EstadisticAMIS (Primas)

Accidentes y Enfermedades Total

Cifras en miles

Compañías		Primas Directas		% Part. en Merc.		Incremento		% de Cartera	
		2018 Importe	2017 Importe	2018	2017	Importe	%	Por Operación	Total Cartera
13	Ve Por Más	421,723	414,770	1.79	1.97	6,953	1.68	100.00	61.38
13	Accidentes Personales	5,148	3,085	0.02	0.01	2,063	66.86	1.22	0.75
13	Gastos Medicos	416,575	411,684	1.77	1.96	4,891	1.19	98.78	60.64
13	Salud	0	0	0.00	0.00	0		0.00	0.00
14	Citibanamex Seguros	229,045	202,494	0.97	0.96	26,551	13.11	100.00	3.25
14	Accidentes Personales	229,262	202,494	0.97	0.96	26,768	13.22	100.09	3.25
14	Gastos Medicos	(217)	0	0.00	0.00	(217)		(0.09)	0.00
14	Salud	0	0	0.00	0.00	0		0.00	0.00
15	Chubb de México	213,592	(40,096)	0.91	(0.19)	253,688	632.70	100.00	4.19
15	Accidentes Personales	171,436	(1,890)	0.73	(0.01)	173,326	*	80.26	3.36
15	Gastos Medicos	42,155	(38,206)	0.18	(0.18)	80,362	210.34	19.74	0.83
15	Salud	0	0	0.00	0.00	0		0.00	0.00
	Medianas	5,294,088	4,145,782	22.46	19.74	1,148,306	27.70	100.00	13.21
	Accidentes Personales	564,986	370,533	2.40	1.76	194,453	52.48	10.67	1.41
	Gastos Medicos	4,441,404	3,564,631	18.84	16.97	876,773	24.60	83.89	11.08
	Salud	287,698	210,619	1.22	1.00	77,080	36.60	5.43	0.72
16	Zurich Santander	209,603	209,632	0.89	1.00	(30)	(0.01)	100.00	12.46
16	Accidentes Personales	153,124	148,618	0.65	0.71	4,506	3.03	73.05	9.11
16	Gastos Medicos	56,479	61,015	0.24	0.29	(4,535)	(7.43)	26.95	3.36
16	Salud	0	0	0.00	0.00	0		0.00	0.00
17	BBVA Bancomer Salud	161,950	102,805	0.69	0.49	59,144	57.53	100.00	100.00
17	Accidentes Personales	0	0	0.00	0.00	0		0.00	0.00
17	Gastos Medicos	159,938	99,463	0.68	0.47	60,475	60.80	98.76	98.76
17	Salud	2,012	3,343	0.01	0.02	(1,331)	(39.82)	1.24	1.24
18	BBVA Bancomer	123,670	139,742	0.52	0.67	(16,072)	(11.50)	100.00	1.65
18	Accidentes Personales	123,670	139,740	0.52	0.67	(16,070)	(11.50)	100.00	1.65
18	Gastos Medicos	0	2	0.00	0.00	(2)	(100.00)	0.00	0.00
18	Salud	0	0	0.00	0.00	0		0.00	0.00
19	Seguros SURA	93,976	99,398	0.40	0.47	(5,423)	(5.46)	100.00	8.80
19	Accidentes Personales	28,963	22,861	0.12	0.11	6,102	26.69	30.82	2.71
19	Gastos Medicos	65,013	76,537	0.28	0.36	(11,525)	(15.06)	69.18	6.08
19	Salud	0	0	0.00	0.00	0		0.00	0.00
20	La Latinoamericana	77,994	78,794	0.33	0.38	(800)	(1.01)	100.00	28.05
20	Accidentes Personales	3,468	8,136	0.01	0.04	(4,668)	(57.37)	4.45	1.25
20	Gastos Medicos	74,526	70,658	0.32	0.34	3,868	5.47	95.55	26.80
20	Salud	0	0	0.00	0.00	0		0.00	0.00
21	Patrimonial Inbursa	68,145	67,236	0.29	0.32	910	1.35	100.00	10.74
21	Accidentes Personales	10,045	10,053	0.04	0.05	(8)	(0.08)	14.74	1.58
21	Gastos Medicos	58,100	57,182	0.25	0.27	918	1.61	85.26	9.15
21	Salud	0	0	0.00	0.00	0		0.00	0.00
22	Dentegra	64,935	40,868	0.28	0.19	24,067	58.89	100.00	100.00
22	Accidentes Personales	0	0	0.00	0.00	0		0.00	0.00
22	Gastos Medicos	60,724	31,994	0.26	0.15	28,729	89.79	93.51	93.51
22	Salud	4,212	8,874	0.02	0.04	(4,662)	(52.54)	6.49	6.49
23	MediAccess	64,312	99,099	0.27	0.47	(34,787)	(35.10)	100.00	100.00
23	Accidentes Personales	0	0	0.00	0.00	0		0.00	0.00
23	Gastos Medicos	0	0	0.00	0.00	0		0.00	0.00
23	Salud	64,312	99,099	0.27	0.47	(34,787)	(35.10)	100.00	100.00
24	HSBC Seguros	56,804	68,138	0.24	0.32	(11,334)	(16.63)	100.00	8.13
24	Accidentes Personales	26,156	33,046	0.11	0.16	(6,890)	(20.85)	46.05	3.74
24	Gastos Medicos	30,648	35,092	0.13	0.17	(4,444)	(12.66)	53.95	4.39
24	Salud	0	0	0.00	0.00	0		0.00	0.00

Análisis de Primas Directas **Primer Trimestre 2018**

EstadisticAMIS (Primas)

Accidentes y Enfermedades Total

Cifras en miles

Compañías		Primas Directas		% Part. en Merc.		Incremento		% de Cartera	
		2018 Importe	2017 Importe	2018	2017	Importe	%	Por Operación	Total Cartera
25	AIG Seguros	55,732	33,339	0.24	0.16	22,392	67.16	100.00	4.02
25	Accidentes Personales	55,732	33,339	0.24	0.16	22,392	67.16	100.00	4.02
25	Gastos Medicos	0	0	0.00	0.00	0		0.00	0.00
25	Salud	0	0	0.00	0.00	0		0.00	0.00
26	PREVEM Seguros	45,767	31,942	0.19	0.15	13,825	43.28	100.00	100.00
26	Accidentes Personales	5,473	5,830	0.02	0.03	(357)	(6.13)	11.96	11.96
26	Gastos Medicos	40,294	26,112	0.17	0.12	14,182	54.31	88.04	88.04
26	Salud	0	0	0.00	0.00	0		0.00	0.00
27	General de Salud	45,734	49,039	0.19	0.23	(3,305)	(6.74)	100.00	100.00
27	Accidentes Personales	0	0	0.00	0.00	0		0.00	0.00
27	Gastos Medicos	1,719	803	0.01	0.00	916	114.11	3.76	3.76
27	Salud	44,014	48,236	0.19	0.23	(4,222)	(8.75)	96.24	96.24
28	Seguros Azteca	24,044	19,837	0.10	0.09	4,208	21.21	100.00	4.91
28	Accidentes Personales	9,311	14,165	0.04	0.07	(4,854)	(34.27)	38.73	1.90
28	Gastos Medicos	14,733	5,672	0.06	0.03	9,062	159.77	61.27	3.01
28	Salud	0	0	0.00	0.00	0		0.00	0.00
29	AXA Salud	22,896	48,818	0.10	0.23	(25,922)	(53.10)	100.00	100.00
29	Accidentes Personales	0	0	0.00	0.00	0		0.00	0.00
29	Gastos Medicos	0	0	0.00	0.00	0		0.00	0.00
29	Salud	22,896	48,818	0.10	0.23	(25,922)	(53.10)	100.00	100.00
30	Centauro	21,779	20,349	0.09	0.10	1,430	7.03	100.00	100.00
30	Accidentes Personales	0	0	0.00	0.00	0		0.00	0.00
30	Gastos Medicos	6,685	8,528	0.03	0.04	(1,844)	(21.62)	30.69	30.69
30	Salud	15,095	11,821	0.06	0.06	3,274	27.70	69.31	69.31
31	Odontoprev	12,774	6,264	0.05	0.03	6,509	103.92	100.00	100.00
31	Accidentes Personales	0	0	0.00	0.00	0		0.00	0.00
31	Gastos Medicos	30	0	0.00	0.00	30		0.23	0.23
31	Salud	12,743	6,264	0.05	0.03	6,479	103.43	99.76	99.76
32	Metlife Mas	6,867	54,966	0.03	0.26	(48,099)	(87.51)	100.00	100.00
32	Accidentes Personales	6,867	54,966	0.03	0.26	(48,099)	(87.51)	100.00	100.00
32	Gastos Medicos	0	0	0.00	0.00	0		0.00	0.00
32	Salud	0	0	0.00	0.00	0		0.00	0.00
33	General de Seguros	5,962	5,599	0.03	0.03	363	6.49	100.00	0.91
33	Accidentes Personales	5,962	5,599	0.03	0.03	363	6.49	100.00	0.91
33	Gastos Medicos	0	0	0.00	0.00	0		0.00	0.00
33	Salud	0	0	0.00	0.00	0		0.00	0.00
34	Interacciones	5,229	5,344	0.02	0.03	(115)	(2.15)	100.00	43.49
34	Accidentes Personales	0	0	0.00	0.00	0		0.00	0.00
34	Gastos Medicos	5,229	5,344	0.02	0.03	(115)	(2.15)	100.00	43.49
34	Salud	0	0	0.00	0.00	0		0.00	0.00
35	El Potosi	5,155	4,572	0.02	0.02	583	12.76	100.00	1.23
35	Accidentes Personales	5,155	4,572	0.02	0.02	583	12.76	100.00	1.23
35	Gastos Medicos	0	0	0.00	0.00	0		0.00	0.00
35	Salud	0	0	0.00	0.00	0		0.00	0.00
36	HDI Seguros	1,948	3,094	0.01	0.01	(1,146)	(37.04)	100.00	0.09
36	Accidentes Personales	1,948	3,094	0.01	0.01	(1,146)	(37.04)	100.00	0.09
36	Gastos Medicos	0	0	0.00	0.00	0		0.00	0.00
36	Salud	0	0	0.00	0.00	0		0.00	0.00
37	Cardif Vida	1,230	(12)	0.01	0.00	1,242	*	100.00	0.33
37	Accidentes Personales	1,230	(12)	0.01	0.00	1,242	*	100.00	0.33
37	Gastos Medicos	0	0	0.00	0.00	0	(100.00)	0.00	0.00
37	Salud	0	0	0.00	0.00	0		0.00	0.00

Análisis de Primas Directas

Primer Trimestre 2018

EstadisticAMIS (Primas)

Accidentes y Enfermedades Total

Cifras en miles

Compañías	Primas Directas		% Part. en Merc.		Incremento		% de Cartera	
	2018 Importe	2017 Importe	2018	2017	Importe	%	Por Operación	Total Cartera
38 Aserta Seguros de Vida	1,054	1,190	0.00	0.01	(136)	(11.46)	100.00	0.66
38 Accidentes Personales	1,054	1,190	0.00	0.01	(136)	(11.46)	100.00	0.66
38 Gastos Medicos	0	0	0.00	0.00	0		0.00	0.00
38 Salud	0	0	0.00	0.00	0		0.00	0.00
39 Hir Seguros	925	1,356	0.00	0.01	(432)	(31.81)	100.00	0.18
39 Accidentes Personales	925	1,356	0.00	0.01	(432)	(31.81)	100.00	0.18
39 Gastos Medicos	0	0	0.00	0.00	0		0.00	0.00
39 Salud	0	0	0.00	0.00	0		0.00	0.00
40 SURA Vida	10	24	0.00	0.00	(15)	(61.17)	100.00	0.00
40 Accidentes Personales	10	24	0.00	0.00	(15)	(61.17)	100.00	0.00
40 Gastos Medicos	0	0	0.00	0.00	0		0.00	0.00
40 Salud	0	0	0.00	0.00	0		0.00	0.00
41 Assurant Vida	0	230	0.00	0.00	(230)	(100.00)		0.00
41 Accidentes Personales	0	230	0.00	0.00	(230)	(100.00)		0.00
41 Gastos Medicos	0	0	0.00	0.00	0			0.00
41 Salud	0	0	0.00	0.00	0			0.00
42 Tokio Marine	(6)	152	0.00	0.00	(158)	(104.07)	100.00	0.00
42 Accidentes Personales	(6)	152	0.00	0.00	(158)	(104.07)	100.00	0.00
42 Gastos Medicos	0	0	0.00	0.00	0		0.00	0.00
42 Salud	0	0	0.00	0.00	0		0.00	0.00
Resto	1,178,488	1,191,817	5.00	5.67	(13,329)	(1.12)	100.00	6.08
Accidentes Personales	439,085	486,959	1.86	2.32	(47,874)	(9.83)	37.26	2.26
Gastos Medicos	574,119	478,403	2.44	2.28	95,716	20.01	48.72	2.96
Salud	165,284	226,454	0.70	1.08	(61,171)	(27.01)	14.03	0.85
Total	23,574,232	20,819,975	100.00	99.13	2,754,257	13.23	100.00	20.48
Accidentes Personales	1,300,215	1,176,817	5.52	5.60	123,399	10.49	5.52	1.13
Gastos Medicos	21,821,035	19,206,086	92.56	91.45	2,614,949	13.62	92.56	18.95
Salud	452,982	437,073	1.92	2.08	15,909	3.64	1.92	0.39

NE = No Existe

* % Extraordinario mayor de 1000%



Análisis de Primas Directas **Primer Trimestre 2018**

EstadisticAMIS (Primas)

Accidentes Personales Total

Cifras en miles

Compañías	Primas Directas		% Part. en Merc.		Incremento		% de Cartera	
	2018 Importe	2017 Importe	2018	2017	Importe	%	Por Operación	Total Cartera
1 Citibanamex Seguros	229,262	202,494	17.63	17.21	26,768	13.22	100.09	3.25
2 Atlas	171,636	164,324	13.20	13.96	7,312	4.45	16.96	4.58
3 Chubb de México	171,436	(1,890)	13.19	(0.16)	173,326	*	80.26	3.36
4 Zurich Santander	153,124	148,618	11.78	12.63	4,506	3.03	73.05	9.11
5 Banorte	126,942	128,092	9.76	10.88	(1,150)	(0.90)	12.77	0.96
Grandes	852,400	641,638	65.56	54.52	210,762	32.85	32.06	2.77
6 BBVA Bancomer	123,670	139,740	9.51	11.87	(16,070)	(11.50)	100	1.65
7 AXA Seguros	59,063	88,765	4.54	7.54	(29,702)	(33.46)	1.64	0.64
8 AIG Seguros	55,732	33,339	4.29	2.83	22,392	67.16	100	4.02
9 Monterrey New York Life	38,165	41,054	2.94	3.49	(2,889)	(7.04)	1.66	0.54
10 Seguros SURA	28,963	22,861	2.23	1.94	6,102	26.69	30.82	2.71
11 HSBC Seguros	26,156	33,046	2.01	2.81	(6,890)	(20.85)	46.05	3.74
12 G.N.P.	22,649	20,730	1.74	1.76	1,920	9.26	0.46	0.16
13 Mapfre México	19,079	26,248	1.47	2.23	(7,168)	(27.31)	2.94	0.41
14 Inbursa	11,528	11,282	0.89	0.96	246	2.18	1.71	0.24
15 Patrimonial Inbursa	10,045	10,053	0.77	0.85	(8)	(0.08)	14.74	1.58
Medianas	395,049	427,117	30.38	36.29	(32,068)	(7.51)	3.15	0.77
16 Seguros Azteca	9,311	14,165	0.72	1.20	(4,854)	(34.27)	38.73	1.90
17 Metlife Mas	6,867	54,966	0.53	4.67	(48,099)	(87.51)	100	100.00
18 General de Seguros	5,962	5,599	0.46	0.48	363	6.49	100	0.91
19 PREVEM Seguros	5,473	5,830	0.42	0.50	(357)	(6.13)	11.96	11.96
20 El Potosi	5,155	4,572	0.40	0.39	583	12.76	100	1.23
21 Ve Por Más	5,148	3,085	0.40	0.26	2,063	66.86	1.22	0.75
22 Metlife México	4,632	4,453	0.36	0.38	179	4.02	0.09	0.02
23 La Latinoamericana	3,468	8,136	0.27	0.69	(4,668)	(57.37)	4.45	1.25
24 HDI Seguros	1,948	3,094	0.15	0.26	(1,146)	(37.04)	100	0.09
25 Cardif Vida	1,230	(12)	0.09	0.00	1,242	*	100	0.33
26 Zurich Vida	1,111	876	0.09	0.07	235	26.78	0.24	0.14
27 Aserta Seguros de Vida	1,054	1,190	0.08	0.10	(136)	(11.46)	100	0.66
28 Hir Seguros	925	1,356	0.07	0.12	(432)	(31.81)	100	0.18
29 Allianz México	480	345	0.04	0.03	134	38.91	0.08	0.02
30 SURA Vida	10	24	0.00	0.00	(15)	(61.17)	100	0.00
31 Odontoprev	0	0	0.00	0.00	0		0	0.00
32 Assurant Vida	0	230	0.00	0.02	(230)	(100.00)		0.00
33 Tokio Marine	(6)	152	0.00	0.01	(158)	(104.07)	100	0.00
Resto	52,766	108,061	4.06	9.18	(55,295)	(51.17)	0.76	0.17
Total	1,300,215	1,176,817	100.00	100.00	123,399	10.49	5.87	1.14

NE = No Existe

* % Extraordinario mayor de 1000%



Análisis de Primas Directas
Primer Trimestre 2018

EstadisticAMIS (Primas)

A. y E. Accidentes Personales Individual

Cifras en miles

Compañías	Primas Directas		% Part. en Merc.		Incremento		% de Cartera	
	2018 Importe	2017 Importe	2018	2017	Importe	%	Por Operación	Total Cartera
1 Zurich Santander	150,211	148,293	22.74	28.18	1,918	1.29	71.66	8.93
2 BBVA Bancomer	118,879	135,066	18.00	25.67	(16,187)	(11.98)	96.13	1.58
3 Citibanamex Seguros	106,142	59,549	16.07	11.32	46,594	78.24	46.34	1.51
4 Chubb de México	85,293	(51,311)	12.91	(9.75)	136,604	(266.23)	39.93	1.67
5 Banorte	78,703	78,281	11.92	14.88	422	0.54	7.92	0.59
Grandes	539,229	369,878	81.64	70.29	169,351	45.79	30.46	1.56
6 AXA Seguros	45,166	64,046	6.84	12.17	(18,881)	(29.48)	1.25	0.49
7 HSBC Seguros	19,804	26,364	3.00	5.01	(6,559)	(24.88)	34.86	2.83
8 Patrimonial Inbursa	10,045	10,053	1.52	1.91	(8)	(0.08)	14.74	1.58
9 Seguros Azteca	9,201	14,160	1.39	2.69	(4,958)	(35.02)	38.27	1.88
10 Seguros SURA	8,675	10,929	1.31	2.08	(2,254)	(20.62)	9.23	0.81
11 Mapfre México	7,072	9,304	1.07	1.77	(2,232)	(23.99)	1.09	0.15
12 Monterrey New York Life	4,077	4,267	0.62	0.81	(190)	(4.45)	0.18	0.06
13 General de Seguros	3,383	3,683	0.51	0.70	(300)	(8.14)	56.75	0.52
14 Atlas	3,191	2,025	0.48	0.38	1,166	57.59	0.32	0.09
15 El Potosi	2,977	2,132	0.45	0.41	846	39.68	57.76	0.71
Medianas	113,592	146,963	17.20	27.93	(33,371)	(22.71)	1.45	0.40
16 Cardif Vida	2,531	312	0.38	0.06	2,219	711.60	205.82	0.69
17 Metlife Mas	1,737	1,767	0.26	0.34	(30)	(1.69)	25.29	25.29
18 AIG Seguros	1,329	4,679	0.20	0.89	(3,350)	(71.59)	2.38	0.10
19 Inbursa	1,321	1,636	0.20	0.31	(315)	(19.26)	0.2	0.03
20 G.N.P.	341	406	0.05	0.08	(65)	(16.12)	0.01	0.00
21 PREVEM Seguros	284	288	0.04	0.05	(5)	(1.65)	0.62	0.62
22 La Latinoamericana	44	175	0.01	0.03	(131)	(74.79)	0.06	0.02
23 Ve Por Más	40	22	0.01	0.00	18	84.72	0.01	0.01
24 Hir Seguros	22	23	0.00	0.00	(1)	(5.38)	2.36	0.00
25 Allianz México	15	7	0.00	0.00	8	109.94	0	0.00
26 SURA Vida	10	24	0.00	0.00	(15)	(61.17)	100	0.00
27 Odontoprev	0	0	0.00	0.00	0		0	0.00
28 Zurich Vida	0	18	0.00	0.00	(18)	(100.00)	0	0.00
Resto	7,672	9,357	1.16	1.78	(1,685)	(18.00)	0.11	0.03
Total	660,493	526,198	100.00	100.00	134,295	25.52	3.92	0.74

NE = No Existe

* % Extraordinario mayor de 1000%



Análisis de Primas Directas **Primer Trimestre 2018**

EstadisticAMIS (Primas)

A. y E. Accidentes Personales Grupo y Colectivo

Cifras en miles

Compañías	Primas Directas		% Part. en Merc.		Incremento		% de Cartera	
	2018 Importe	2017 Importe	2018	2017	Importe	%	Por Operación	Total Cartera
1 Atlas	168,445	162,299	26.33	24.95	6,146	3.79	16.64	4.49
2 Citibanamex Seguros	123,119	142,945	19.25	21.97	(19,826)	(13.87)	53.75	1.75
3 Chubb de México	86,143	49,421	13.47	7.60	36,722	74.30	40.33	1.69
4 AIG Seguros	54,403	28,660	8.50	4.41	25,742	89.82	97.62	3.92
5 Banorte	48,239	49,811	7.54	7.66	(1,573)	(3.16)	4.85	0.36
Grandes	480,349	433,137	75.09	66.57	47,212	10.90	19.18	1.57
6 Monterrey New York Life	34,088	36,787	5.33	5.65	(2,699)	(7.34)	1.48	0.48
7 G.N.P.	22,309	20,324	3.49	3.12	1,985	9.77	0.45	0.16
8 Seguros SURA	20,288	11,933	3.17	1.83	8,356	70.03	21.59	1.90
9 AXA Seguros	13,897	24,718	2.17	3.80	(10,821)	(43.78)	0.39	0.15
10 Mapfre México	12,007	16,944	1.88	2.60	(4,936)	(29.13)	1.85	0.26
11 Inbursa	10,207	9,646	1.60	1.48	561	5.82	1.52	0.21
12 HSBC Seguros	6,351	6,682	0.99	1.03	(331)	(4.95)	11.18	0.91
13 PREVEM Seguros	5,189	5,541	0.81	0.85	(353)	(6.36)	11.34	11.34
14 Metlife Mas	5,130	53,200	0.80	8.18	(48,069)	(90.36)	74.71	74.71
15 Ve Por Más	5,108	3,064	0.80	0.47	2,044	66.73	1.21	0.74
Medianas	134,575	188,838	21.04	29.02	(54,263)	(28.74)	1.05	0.32
16 BBVA Bancomer	4,791	4,673	0.75	0.72	118	2.51	3.87	0.06
17 Metlife México	4,632	4,453	0.72	0.68	179	4.02	0.09	0.02
18 La Latinoamericana	3,424	7,960	0.54	1.22	(4,536)	(56.99)	4.39	1.23
19 Zurich Santander	2,913	325	0.46	0.05	2,588	797.02	1.39	0.17
20 General de Seguros	2,578	1,916	0.40	0.29	663	34.61	43.25	0.40
21 El Potosi	2,178	2,440	0.34	0.38	(262)	(10.76)	42.24	0.52
22 HDI Seguros	1,948	3,094	0.30	0.48	(1,146)	(37.04)	100	0.09
23 Zurich Vida	1,111	858	0.17	0.13	252	29.39	0.24	0.14
24 Asera Seguros de Vida	1,054	1,190	0.16	0.18	(136)	(11.46)	100	0.66
25 Hir Seguros	903	1,333	0.14	0.20	(430)	(32.27)	97.64	0.17
26 Allianz México	465	338	0.07	0.05	127	37.41	0.08	0.02
27 Seguros Azteca	110	5	0.02	0.00	105	*	0.46	0.02
28 Assurant Vida	0	230	0.00	0.04	(230)	(100.00)		0.00
29 Tokio Marine	(6)	152	0.00	0.02	(158)	(104.07)	100	0.00
30 Cardif Vida	(1,301)	(324)	(0.20)	(0.05)	(977)	301.64	-105.82	-0.35
Resto	24,798	28,644	3.88	4.40	(3,846)	(13.43)	0.37	0.06
Total	639,723	650,619	100.00	100.00	(10,897)	(1.67)	2.90	0.57

NE = No Existe

* % Extraordinario mayor de 1000%



Análisis de Primas Directas

Primer Trimestre 2018

EstadisticAMIS (Primas)

A. y E. Gastos Médicos Total

Cifras en miles

Compañías	Primas Directas		% Part. en Merc.		Incremento		% de Cartera	
	2018 Importe	2017 Importe	2018	2017	Importe	%	Por Operación	Total Cartera
1 Metlife México	5,261,572	4,691,630	24.11	24.43	569,942	12.15	99.91	24.51
2 G.N.P.	4,898,858	4,779,310	22.45	24.88	119,548	2.50	99.54	34.59
3 AXA Seguros	3,541,934	2,615,653	16.23	13.62	926,282	35.41	98.36	38.27
4 Monterrey New York Life	2,262,767	2,374,090	10.37	12.36	(111,323)	(4.69)	98.34	32.17
5 Banorte	867,162	665,975	3.97	3.47	201,187	30.21	87.23	6.55
Grandes	16,832,293	15,126,658	77.14	78.76	1,705,635	11.28	98.53	25.83
6 Atlas	840,381	702,370	3.85	3.66	138,011	19.65	83.04	22.42
7 Inbursa	661,171	645,257	3.03	3.36	15,913	2.47	98.29	13.69
8 Mapfre México	629,189	468,209	2.88	2.44	160,980	34.38	97.06	13.42
9 Allianz México	592,027	523,836	2.71	2.73	68,191	13.02	99.92	22.48
10 BUPA México	502,544	348,829	2.30	1.82	153,715	44.07	100.00	100.00
11 Zurich Vida	467,841	325,506	2.14	1.69	142,336	43.73	99.76	58.49
12 Ve Por Más	416,575	411,684	1.91	2.14	4,891	1.19	98.78	60.64
13 Plan Seguro	262,956	213,541	1.21	1.11	49,414	23.14	47.75	47.75
14 BBVA Bancomer Salud	159,938	99,463	0.73	0.52	60,475	60.80	98.76	98.76
15 La Latinoamericana	74,526	70,658	0.34	0.37	3,868	5.47	95.55	26.80
Medianas	4,607,148	3,809,352	21.11	19.83	797,796	20.94	90.17	24.40
16 Seguros SURA	65,013	76,537	0.30	0.40	(11,525)	(15.06)	69.18	6.08
17 Dentegra	60,724	31,994	0.28	0.17	28,729	89.79	93.51	93.51
18 Patrimonial Inbursa	58,100	57,182	0.27	0.30	918	1.61	85.26	9.15
19 Zurich Santander	56,479	61,015	0.26	0.32	(4,535)	(7.43)	26.95	3.36
20 Chubb de México	42,155	(38,206)	0.19	(0)	80,362	(210)	19.74	0.83
21 PREVEM Seguros	40,294	26,112	0.18	0.14	14,182	54.31	88.04	88.04
22 HSBC Seguros	30,648	35,092	0.14	0.18	(4,444)	(12.66)	53.95	4.39
23 Seguros Azteca	14,733	5,672	0.07	0.03	9,062	159.77	61.27	3.01
24 Centauro	6,685	8,528	0.03	0.04	(1,844)	(21.62)	30.69	30.69
25 Interacciones	5,229	5,344	0.02	0.03	(115)	(2.15)	100.00	43.49
26 General de Salud	1,719	803	0.01	0.00	916	114.11	3.76	3.76
27 Odontoprev	30	0	0.00	0.00	30		0.23	0.23
28 Cardif Vida	0	0	0.00	0.00	0	(100.00)	0.00	0.00
29 BBVA Bancomer	0	2	0.00	0.00	(2)	(100.00)	0.00	0.00
30 Citibanamex Seguros	(217)	0	0.00	0.00	(217)		(0.09)	0.00
Resto	381,594	270,076	1.75	1.41	111,518	41.29	31.37	1.54
Total	21,821,035	19,206,086	100.00	100.00	2,614,949	13.62	93.21	20.05

NE = No Existe

* % Extraordinario mayor de 1000%



Análisis de Primas Directas

Primer Trimestre 2018

EstadisticAMIS (Primas)

A. y E. Gastos Médicos Individual

Cifras en miles

Compañías	Primas Directas		% Part. en Merc.		Incremento		% de Cartera		
	2018 Importe	2017 Importe	2018	2017	Importe	%	Por Operación	Total Cartera	
1	G.N.P.	2,609,215	2,362,093	28.82	30.14	247,123	10.46	53.02	18.42
2	AXA Seguros	2,096,562	1,802,784	23.15	23.00	293,778	16.30	58.22	22.65
3	Monterrey New York Life	1,388,534	1,265,779	15.33	16.15	122,755	9.70	60.35	19.74
4	Metlife México	670,678	578,322	7.41	7.38	92,356	15.97	12.74	3.12
5	Inbursa	451,220	407,702	4.98	5.20	43,518	10.67	67.08	9.34
	Grandes	7,216,210	6,416,681	79.70	81.86	799,529	12.46	43.05	12.72
6	BUPA México	431,627	297,305	4.77	3.79	134,322	45.18	85.89	85.89
7	Mapfre México	266,001	217,879	2.94	2.78	48,121	22.09	41.03	5.67
8	Atlas	221,816	180,779	2.45	2.31	41,037	22.70	21.92	5.92
9	Allianz México	213,950	195,705	2.36	2.50	18,245	9.32	36.11	8.12
10	Ve Por Más	194,212	156,273	2.14	1.99	37,940	24.28	46.05	28.27
11	Banorte	151,514	131,953	1.67	1.68	19,562	14.82	15.24	1.14
12	Patrimonial Inbursa	58,100	57,182	0.64	0.73	918	1.61	85.26	9.15
13	Zurich Santander	56,479	61,015	0.62	0.78	(4,535)	(7.43)	26.95	3.36
14	Plan Seguro	42,778	29,833	0.47	0.38	12,945	43.39	7.77	7.77
15	La Latinoamericana	42,606	39,564	0.47	0.50	3,043	7.69	54.63	15.32
	Medianas	1,679,084	1,367,487	18.54	17.45	311,596	22.79	33.07	5.86
16	Chubb de México	36,819	(63,084)	0.41	(0.80)	99,903	(158.37)	17.24	0.72
17	HSBC Seguros	30,648	35,092	0.34	0.45	(4,444)	(12.66)	53.95	4.39
18	PREVEM Seguros	27,832	19,363	0.31	0.25	8,469	43.74	60.81	60.81
19	Seguros SURA	21,061	22,670	0.23	0.29	(1,610)	(7.10)	22.41	1.97
20	BBVA Bancomer Salud	15,729	18,869	0.17	0.24	(3,140)	(16.64)	9.71	9.71
21	Seguros Azteca	14,733	5,672	0.16	0.07	9,062	159.77	61.27	3.01
22	Zurich Vida	9,647	13,163	0.11	0.17	(3,516)	(26.71)	2.06	1.21
23	Interacciones	1,812	1,859	0.02	0.02	(47)	(2.53)	34.65	15.07
24	General de Salud	1,390	528	0.02	0.01	862	163.37	3.04	3.04
25	Cardif Vida	0	0	0.00	0.00	0	(100.00)	0.00	0.00
26	Patria	0	0	0.00	0.00	0			
27	BBVA Bancomer	0	2	0.00	0.00	(2)	(100.00)	0.00	0.00
28	Citibanamex Seguros	(217)	0	0.00	0.00	(217)		(0.09)	0.00
	Resto	159,455	54,135	1.76	0.69	105,320	194.55	10.85	0.68
	Total	9,054,748	7,838,303	100.00	100.00	1,216,446	15.52	38.85	8.33

NE = No Existe

* % Extraordinario mayor de 100%



Compañías	Primas Directas		% Part. en Merc.		Incremento		% de Cartera	
	2018 Importe	2017 Importe	2018	2017	Importe	%	Por Operación	Total Cartera
1 Metlife México	4,590,894	4,113,308	35.96	36.18	477,586	11.61	87.18	21.38
2 G.N.P.	2,289,642	2,417,217	17.94	21.26	(127,575)	(5.28)	46.52	16.17
3 AXA Seguros	1,445,372	812,869	11.32	7.15	632,504	77.81	40.14	15.62
4 Monterrey New York Life	874,233	1,108,311	6.85	9.75	(234,078)	(21.12)	37.99	12.43
5 Banorte	715,647	534,023	5.61	4.70	181,625	34.01	71.99	5.41
Grandes	9,915,789	8,985,727	77.67	79.05	930,062	10.35	58.04	15.22
6 Atlas	618,565	521,590	4.85	4.59	96,974	18.59	61.12	16.51
7 Zurich Vida	458,195	312,343	3.59	2.75	145,852	46.70	97.71	57.29
8 Allianz México	378,078	328,131	2.96	2.89	49,947	15.22	63.81	14.35
9 Mapfre México	363,189	250,330	2.84	2.20	112,859	45.08	56.02	7.75
10 Ve Por Más	222,363	255,412	1.74	2.25	(33,049)	(12.94)	52.73	32.37
11 Plan Seguro	220,178	183,708	1.72	1.62	36,470	19.85	39.98	39.98
12 Inbursa	209,951	237,555	1.64	2.09	(27,605)	(11.62)	31.21	4.35
13 BBVA Bancomer Salud	144,209	80,594	1.13	1	63,615	79	89.05	89.05
14 BUPA México	70,917	51,523	0.56	0.45	19,394	37.64	14.11	14.11
15 Dentegra	60,724	31,994	0.48	0.28	28,729	89.79	93.51	93.51
Medianas	2,746,366	2,253,180	21.51	19.82	493,186	21.89	53.89	14.71
16 Seguros SURA	43,952	53,867	0.34	0.47	(9,915)	(18.41)	46.77	4.11
17 La Latinoamericana	31,920	31,094	0.25	0.27	825	2.65	40.93	11.48
18 PREVEM Seguros	12,462	6,749	0.10	0.06	5,713	84.66	27.23	27.23
19 Centauro	6,685	8,528	0.05	0.08	(1,844)	(21.62)	30.69	30.69
20 Chubb de México	5,336	24,877	0.04	0.22	(19,542)	(78.55)	2.50	0.10
21 Interacciones	3,417	3,485	0.03	0.03	(68)	(1.95)	65.35	28.42
22 General de Salud	330	275	0.00	0.00	54	19.70	0.72	0.72
23 Odontoprev	30	0	0.00	0.00	30		0.23	0.23
Resto	104,131	128,876	0.82	1.13	(24,745)	(19.20)	20.15	1.58
Total	12,766,286	11,367,783	100.00	100.00	1,398,503	12.30	56.25	14.12

NE = No Existe

* % Extraordinario mayor de 1000%



Análisis de Primas Directas		Primer Trimestre 2018							
		EstadisticAMIS (Primas)							
		Salud Total							
		Cifras en miles							
Compañías		Primas Directas		% Part. en Merc.		Incremento		% de Cartera	
		2018 Importe	2017 Importe	2018	2017	Importe	%	Por Operación	Total Cartera
1	Plan Seguro	287,698	210,619	63.51	48.19	77,080	36.60	52.25	52.25
2	MediAccess	64,312	99,099	14.20	22.67	(34,787)	(35.10)	100.00	100.00
3	General de Salud	44,014	48,236	9.72	11.04	(4,222)	(8.75)	96.24	96.24
4	AXA Salud	22,896	48,818	5.05	11.17	(25,922)	(53.10)	100.00	100.00
5	Centaurio	15,095	11,821	3.33	2.70	3,274.00	27.70	69.31	69.31
	Grandes	434,015	418,592	95.81	95.77	15,423	3.68	61.53	61.53
6	Odontoprev	12,743	6,264	2.81	1.43	6,479	103.43	99.76	99.76
7	Dentegra	4,212	8,874	0.93	2.03	(4,662)	(52.54)	6.49	6.49
8	BBVA Bancomer Salud	2,012	3,343	0.44	0.76	(1,331)	(39.82)	1.24	1.24
	Medianas	18,966	18,481	4.19	4.23	486	2.63	7.91	7.91
	Total	452,982	437,073	100.00	100.00	15,909	3.64	47.93	47.93

Análisis de Primas Directas		Primer Trimestre 2018							
		EstadisticAMIS (Primas)							
		Salud Individual							
		Cifras en miles							
Compañías		Primas Directas		% Part. en Merc.		Incremento		% de Cartera	
		2018 Importe	2017 Importe	2018	2017	Importe	%	Por Operación	Total Cartera
1	Plan Seguro	254,716	186,648	75.45	70.17	68,068	36.47	46.26	46.26
2	MediAccess	42,160	37,490	12.49	14.10	4,670	12.46	65.56	65.56
3	General de Salud	16,953	23,090	5.02	8.68	(6,136)	(26.58)	37.07	37.07
4	AXA Salud	14,542	17,083	4.31	6.42	(2,541)	(14.87)	63.52	63.52
5	Odontoprev	9,005	1,440	2.67	0.54	7,565	525.32	70.50	70.50
	Grandes	337,377	265,751	99.93	99.92	71,626	26.95	48.45	48.45
6	Dentegra	134	143	0.04	0.05	(9)	(6.46)	0.21	0.21
7	Centaurio	100	82	0.03	0.03	18	21.66	0.46	0.46
	Medianas	234	225	0.07	0.08	8	3.76	0.27	0.27
	Total	337,611	265,976	100.00	100.00	71,635	26.93	43.11	43.11

Análisis de Primas Directas		Primer Trimestre 2018							
		EstadisticAMIS (Primas)							
		Salud Grupo y Colectivo							
		Cifras en miles							
Compañías		Primas Directas		% Part. en Merc.		Incremento		% de Cartera	
		2018 Importe	2017 Importe	2018	2017	Importe	%	Por Operación	Total Cartera
1	Plan Seguro	32,982	23,971	28.59	14.01	9,011	37.59	5.99	5.99
2	General de Salud	27,061	25,146	23.46	14.70	1,915	7.61	59.17	59.17
3	MediAccess	22,152	61,609	19.20	36.01	(39,457)	(64.04)	34.44	34.44
4	Centaurio	14,995	11,739	13.00	7	3,256	28	68.85	68.85
5	AXA Salud	8,354	31,735	7.24	18.55	(23,382)	(73.68)	36.48	36.48
	Grandes	105,543	154,199	91.48	90.12	(48,656)	(31.55)	14.96	14.96
6	Dentegra	4,078	8,731	3.53	5.10	(4,653)	(53.30)	6.28	6.28
7	Odontoprev	3,738	4,824	3.24	2.82	(1,086)	(22.51)	29.27	29.27
8	BBVA Bancomer Salud	2,012	3,343	1.74	1.95	(1,331)	(39.82)	1.24	1.24
	Medianas	9,827	16,898	8.52	9.88	(7,070)	(41.84)	4.10	4.10
	Total	115,371	171,097	100.00	100.00	(55,726)	(32.57)	12.21	12.21

NE = No Existe

* % Extraordinario mayor de 1000%



Análisis de Primas Directas				Primer Trimestre 2018				
EstadisticAMIS (Primas)								
Daños								
Cifras en miles								
Compañías		Primas Directas		% Part. en Merc.		Incremento		Participación de Cartera %
		2018 Importe	2017 Importe	2018	2017	Importe	%	
1	Qualitas	8,615,598	8,791,665	16.57	18.23	(176,068)	(2.00)	6.36
2	Chubb de México	4,371,670	3,633,445	8.41	7.54	738,225	20.32	3.23
3	Banorte	4,198,888	3,167,957	8.08	6.57	1,030,931	32.54	3.10
4	AXA Seguros	4,180,603	4,060,843	8.04	8.42	119,760	2.95	3.09
5	G.N.P.	4,018,674	4,438,393	7.73	9.21	(419,719)	(9.46)	2.97
	Grandes	25,385,433	24,092,304	48.82	49.97	1,293,130	5.37	18.74
6	Inbursa	2,903,611	2,868,342	5.58	5.95	35,269	1.23	2.14
7	Mapfre México	2,702,310	2,541,474	5.20	5.27	160,836	6.33	2.00
8	GMX Seguros	2,634,585	1,915,399	5.07	3.97	719,185	37.55	1.95
9	Zurich Daños	2,162,273	1,825,306	4.16	3.79	336,967	18.46	1.60
10	HDI Seguros	2,128,301	1,545,889	4.09	3.21	582,412	37.67	1.57
11	BBVA Bancomer	1,987,437	2,130,302	3.82	4.42	(142,865)	(6.71)	1.47
12	Atlas	1,640,616	1,758,967	3.16	3.65	(118,352)	(6.73)	1.21
13	Afirme	1,466,835	1,121,172	2.82	2.33	345,663	30.83	1.08
14	AIG Seguros	1,331,588	1,464,477	2.56	3.04	(132,888)	(9.07)	0.98
15	Seguros SURA	808,943	499,715	1.56	1.04	309,228	61.88	0.60
	Medianas	19,766,499	17,671,043	38.02	36.65	2,095,456	11.86	14.59
16	FM Global	774,492	796,476	1.49	1.65	(21,983)	(2.76)	0.57
17	Allianz México	721,234	862,906	1.39	1.79	(141,673)	(16.42)	0.53
18	General de Seguros	552,520	567,387	1.06	1.18	(14,867)	(2.62)	0.41
19	Agroasemex	525,338	2,012	1.01	0.00	523,326	*	0.39
20	Zurich Santander	470,627	523,803	0.91	1.09	(53,176)	(10.15)	0.35
21	ANA	456,612	356,048	0.88	0.74	100,565	28.24	0.34
22	Tlaloc Seguros	334,402	13,319	0.64	0.03	321,083	*	0.25
23	Primero Seguros	282,103	186,736	0.54	0.39	95,367	51.07	0.21
24	El Potosi	281,752	227,261	0.54	0.47	54,492	23.98	0.21
25	XL Seguros	273,342	484,405	0.53	1.00	(211,063)	(43.57)	0.20
26	HDI-Gerling	267,790	247,770	0.52	0.51	20,021	8.08	0.20
27	El Aguila	214,749	191,116	0.41	0.40	23,633	12.37	0.16
28	Assurant Daños	193,269	187,707	0.37	0.39	5,562	2.96	0.14
29	Seguros Azteca Daños	192,466	173,524	0.37	0.36	18,942	10.92	0.14
30	Sompo Japan	185,637	186,005	0.36	0.39	(368)	(0.20)	0.14
31	Tokio Marine	165,606	173,222	0.32	0.36	(7,616)	(4.40)	0.12
32	Patrimonial Inbursa	142,870	175,439	0.27	0.36	(32,569)	(18.56)	0.11
33	SHF Cred Vivienda	124,470	134,881	0.24	0.28	(10,411)	(7.72)	0.09
34	Cardif Seguros Generales	120,053	477,560	0.23	0.99	(357,507)	(74.86)	0.09
35	Atradius	114,818	118,651	0.22	0	(3,833)	(3)	0.08
36	Ve Por Más	100,836	69,403	0.19	0.14	31,433	45.29	0.07
37	Citibanamex Seguros	98,201	81,865	0.19	0.17	16,336	19.95	0.07
38	Solunion Crédito	87,053	81,360	0.17	0.17	5,694	7.00	0.06
39	La Latinoamericana	63,207	53,125	0.12	0.11	10,082	18.98	0.05
40	Patrimonial Daños	41,341	55,099	0.08	0.11	(13,759)	(24.97)	0.03
41	Berkley Seguros	35,131	0	0.07	0.00	35,131		0.03
42	Genworth Seg. de Credito	14,138	15,851	0.03	0.03	(1,713)	(10.81)	0.01
43	Virginia Surety	6,463	0	0.01	0.00	6,463		0.00
44	HSBC Seguros	3,538	7,661	0.01	0.02	(4,123)	(53.82)	0.00
45	Interacciones	0	689	0.00	0.00	(689)	(100.00)	0.00
	Resto	6,844,059	6,451,281	13.16	13.38	392,778	6.09	5.05
	Total	51,995,991	48,214,627	100.00	100.00	3,781,364	7.84	38.39

NE = No Existe, ND = NO DISPONIBLE

*% Extraordinario mayor de 1000%



Análisis de Primas Directas		Primer Trimestre 2018						
EstadisticAMIS (Primas)								
Daños sin Autos								
Cifras en miles								
Compañías	Primas Directas		% Part. en Merc.		Incremento		Participación de Cartera %	
	2018 Importe	2017 Importe	2018	2017	Importe	%		
1	GMX Seguros	2,634,585	1,915,399	11.29	8.71	719,185	37.55	1.95
2	Banorte	2,600,057	1,812,867	11.14	8.25	787,190	43.42	1.92
3	Mapfre México	1,787,092	1,749,009	7.66	7.96	38,083	2.18	1.32
4	Inbursa	1,698,211	1,688,283	7.28	7.68	9,928	0.59	1.25
5	AXA Seguros	1,531,784	2,080,715	6.57	9.47	(548,931)	(26.38)	1.13
	Grandes	10,251,728	9,246,272	43.94	42.06	1,005,456	10.87	7.57
6	Chubb de México	1,411,514	1,195,908	6.05	5.44	215,607	18.03	1.04
7	AIG Seguros	1,193,585	1,332,728	5.12	6.06	(139,143)	(10.44)	0.88
8	G.N.P.	1,150,712	1,159,555	4.93	5.28	(8,844)	(0.76)	0.85
9	Zurich Daños	1,029,952	995,274	4.41	4.53	34,677	3.48	0.76
10	Afirme	904,386	670,186	3.88	3.05	234,200	34.95	0.67
11	Atlas	884,309	1,025,602	3.79	4.67	(141,293)	(13.78)	0.65
12	FM Global	774,492	796,476	3.32	3.62	(21,983)	(2.76)	0.57
13	BBVA Bancomer	725,019	822,324	3.11	3.74	(97,304)	(11.83)	0.54
14	Allianz México	681,359	843,686	2.92	3.84	(162,326)	(19.24)	0.50
15	Agroasemex	525,338	2,012	2.25	0.01	523,326	*	0.39
	Medianas	9,280,666	8,843,750	39.78	40.23	436,916	4.94	6.85
16	Seguros SURA	494,131	349,913	2.12	1.59	144,218	41.22	0.36
17	Zurich Santander	422,508	477,873	1.81	2.17	(55,365)	(11.59)	0.31
18	Tlaloc Seguros	334,402	13,319	1.43	0.06	321,083	*	0.25
19	XL Seguros	273,342	484,405	1.17	2.20	(211,063)	(43.57)	0.20
20	HDI-Gerling	267,790	247,770	1.15	1.13	20,021	8.08	0.20
21	HDI Seguros	233,399	189,983	1.00	0.86	43,415	22.85	0.17
22	General de Seguros	227,973	215,260	0.98	0.98	12,713	5.91	0.17
23	Assurant Daños	193,000	187,707	0.83	0.85	5,293	2.82	0.14
24	Sompo Japan	184,721	184,997	0.79	0.84	(275)	(0.15)	0.14
25	Tokio Marine	160,407	168,620	0.69	0.77	(8,212)	(4.87)	0.12
26	Seguros Azteca Daños	154,576	151,274	0.66	0.69	3,302	2.18	0.11
27	Patrimonial Inbursa	138,823	170,973	0.60	0.78	(32,149)	(18.80)	0.10
28	SHF Cred Vivienda	124,470	134,881	0.53	0.61	(10,411)	(7.72)	0.09
29	Atradius	114,818	118,651	0.49	1	(3,833)	(3)	0.08
30	Solunion Crédito	87,053	81,360	0.37	0.37	5,694	7.00	0.06
31	Citibanamex Seguros	70,460	67,051	0.30	0.31	3,408	5.08	0.05
32	El Aguila	60,251	48,707	0.26	0.22	11,544	23.70	0.04
33	Cardif Seguros Generales	59,635	448,587	0.26	2.04	(388,952)	(86.71)	0.04
34	El Potosi	58,003	59,363	0.25	0.27	(1,361)	(2.29)	0.04
35	Primero Seguros	45,217	38,167	0.19	0.17	7,051	18.47	0.03
36	Berkley Seguros	35,131	0	0.15	0.00	35,131		0.03
37	Ve Por Más	30,140	20,334	0.13	0.09	9,807	48.23	0.02
38	Genworth Seg. de Credito	14,138	15,851	0.06	0.07	(1,713)	(10.81)	0.01
39	La Latinoamericana	6,649	8,001	0.03	0.04	(1,352)	(16.89)	0.00
40	Virginia Surety	4,138	0	0.02	0.00	4,138		0.00
41	HSBC Seguros	3,538	7,661	0.02	0.03	(4,123)	(53.82)	0.00
42	Qualitas	333	510	0.00	0.00	(177)	(34.72)	0.00
43	Interacciones	0	689	0.00	0.00	(689)	(100.00)	0.00
	Resto	3,799,047	3,891,906	16.28	17.71	(92,859)	(2.39)	2.80
	Total	23,331,441	21,981,927	100.00	100.00	1,349,513	6.14	17.22

NE = No Existe, ND = NO DISPONIBLE

* % Extraordinario mayor de 1000%



EstadisticAMIS (Primas)

Responsabilidad Civil y Riesgos Profesionales Total

Cifras en miles

Compañías	Primas Directas		% Part. en Merc.		Incremento		% de Cartera		
	2018 Importe	2017 Importe	2018	2017	Importe	%	Por Operación	Total Cartera	
1	GMX Seguros	481,732	503,684	17.07	16.55	(21,952)	(4.36)	100.00	18.28
2	Chubb de México	381,252	402,601	13.51	13.23	(21,349)	(5.30)	100.00	7.48
3	Inbursa	298,256	299,284	10.57	9.83	(1,028)	(0.34)	100.00	6.18
4	Afirme	237,928	176,609	8.43	5.80	61,319	34.72	100.00	13.40
5	Mapfre México	236,047	338,937	8.37	11.14	(102,889)	(30.36)	100.00	5.03
	Grandes	1,635,215	1,721,115	57.96	56.56	(85,899)	(4.99)	100.00	8.60
6	AIG Seguros	185,907	111,136	6.59	3.65	74,771	67.28	100.00	13.40
7	AXA Seguros	166,808	242,775	5.91	7.98	(75,967)	(31.29)	100.00	1.80
8	Zurich Daños	120,699	143,044	4.28	4.70	(22,345)	(15.62)	100.00	5.58
9	XL Seguros	112,491	126,812	3.99	4.17	(14,321)	(11.29)	100.00	41.15
10	G.N.P.	107,898	130,896	3.82	4.30	(22,998)	(17.57)	100.00	0.76
11	Banorte	106,431	102,446	3.77	3.37	3,984	3.89	100.00	0.80
12	Atlas	70,823	115,249	2.51	3.79	(44,426)	(38.55)	100.00	1.89
13	HDI-Gerling	60,440	91,440	2.14	3.00	(31,000)	(33.90)	100.00	22.57
14	Seguros SURA	49,785	41,321	1.76	1.36	8,464	20.48	100.00	4.66
15	HDI Seguros	35,092	30,986	1.24	1.02	4,106	13.25	100.00	1.65
	Medianas	1,016,372	1,136,105	36.03	37.33	(119,733)	(10.54)	100.00	2.13
16	Allianz México	29,624	45,508	1.05	1.50	(15,884)	(34.90)	100.00	1.12
17	BBVA Bancomer	26,724	30,611	0.95	1.01	(3,887)	(12.70)	100.00	0.36
18	General de Seguros	17,241	31,031	0.61	1.02	(13,790)	(44.44)	100.00	2.64
19	El Potosi	14,165	13,377	0.50	0.44	788	5.89	100.00	3.37
20	Sompo Japan	13,841	11,280	0.49	0.37	2,561	22.70	100.00	7.46
21	Berkley Seguros	10,304	0	0.37	0.00	10,304		100.00	29.33
22	Primero Seguros	8,887	6,566	0.32	0.22	2,321	35.35	100.00	3.15
23	Tokio Marine	8,504	11,162	0.30	0.37	(2,657)	(23.81)	100.00	4.43
24	El Aguila	8,260	4,236	0.29	0.14	4,024	94.98	100.00	3.85
25	Zurich Santander	7,442	8,030	0.26	0.26	(589)	(7.33)	100.00	0.44
26	Ve Por Más	6,961	6,158	0.25	0.20	803	13.04	100.00	1.01
27	Assurant Daños	4,968	4,683	0.18	0.15	285	6.09	100.00	2.57
28	Patrimonial Inbursa	3,945	3,634	0.14	0.12	310	8.53	100.00	0.62
29	La Latinoamericana	3,297	2,653	0.12	0.09	643	24.24	100.00	1.19
30	Citibanamex Seguros	2,629	2,491	0.09	0.08	137	5.51	100.00	0.04
31	Seguros Azteca Daños	2,559	3,049	0.09	0.10	(491)	(16.10)	100.00	1.33
32	Qualitas	333	510	0.01	0.02	(177)	(34.72)	100.00	0.00
33	Interacciones	0	362	0.00	0.01	(362)	(100.00)		0.00
34	Agroasemex	0	573	0.00	0.02	(573)	(100.00)		0.00
	Resto	169,683	185,916	6.01	6.11	(16,233)	(8.73)	100.00	0.53
	Total	2,821,271	3,043,136	100.00	100.00	(221,865)	(7.29)	100.00	2.86

NE = No Existe

* % Extraordinario mayor de 1000%



Análisis de Primas Directas

Primer Trimestre 2018

EstadisticAMIS (Primas)

R.C. y R.P. General

Cifras en miles

Compañías	Primas Directas		% Part. en Merc.		Incremento		% de Cartera	
	2018 Importe	2017 Importe	2018	2017	Importe	%	Por Operación	Total Cartera
1 Chubb de México	379,204	389,498	18.54	18.47	(10,294)	(2.64)	99.46	7.44
2 GMX Seguros	226,539	233,780	11.07	11.08	(7,241)	(3.10)	47.03	8.60
3 AIG Seguros	185,241	108,390	9.06	5.14	76,851	70.90	99.64	13.35
4 Inbursa	180,853	208,083	8.84	9.87	(27,231)	(13.09)	60.64	3.75
5 AXA Seguros	133,620	176,331	6.53	8.36	(42,710)	(24.22)	80.10	1.44
Grandes	1,105,457	1,116,082	54.04	52.92	(10,625)	(0.95)	73.02	4.76
6 Mapfre México	122,861	133,531	6.01	6.33	(10,670)	(7.99)	52.05	2.62
7 XL Seguros	112,491	126,812	5.50	6.01	(14,321)	(11.29)	100.00	41.15
8 Afirme	98,715	74,759	4.83	3.54	23,956	32.04	41.49	5.56
9 G.N.P.	94,666	92,402	4.63	4.38	2,265	2.45	87.74	0.67
10 Zurich Daños	89,047	95,536	4.35	4.53	(6,490)	(6.79)	73.78	4.12
11 Banorte	84,112	81,409	4.11	3.86	2,703	3.32	79.03	0.64
12 HDI-Gerling	60,440	91,440	2.95	4.34	(31,000)	(33.90)	100.00	22.57
13 Seguros SURA	49,273	40,723	2.41	1.93	8,550	20.99	98.97	4.61
14 Atlas	47,135	68,046	2.30	3.23	(20,911)	(30.73)	66.55	1.26
15 HDI Seguros	33,224	29,465	1.62	1.40	3,759	12.76	94.68	1.56
Medianas	791,963	834,124	38.71	39.55	(42,160)	(5.05)	69.61	1.82
16 BBVA Bancomer	26,724	30,611	1.31	1.45	(3,887)	(12.70)	100.00	0.36
17 Allianz México	23,587	38,172	1.15	1.81	(14,585)	(38.21)	79.62	0.90
18 Sompo Japan	13,841	11,280	0.68	0.53	2,561	22.70	100.00	7.46
19 El Potosi	11,816	10,926	0.58	0.52	890	8.15	83.41	2.81
20 Berkley Seguros	10,304	0	0.50	0.00	10,304		100.00	29.33
21 General de Seguros	8,993	18,298	0.44	0.87	(9,305)	(50.85)	52.16	1.38
22 Primero Seguros	8,887	6,566	0.43	0.31	2,321	35.35	100.00	3.15
23 El Aguila	8,260	4,236	0.40	0.20	4,024	94.98	100.00	3.85
24 Zurich Santander	7,442	8,030	0.36	0.38	(589)	(7.33)	100.00	0.44
25 Tokio Marine	7,164	10,695	0.35	0.51	(3,531)	(33.02)	84.24	3.73
26 Ve Por Más	5,029	4,041	0.25	0.19	987	24.43	72.24	0.73
27 Assurant Daños	4,968	4,683	0.24	0.22	285	6.09	100.00	2.57
28 Patrimonial Inbursa	3,945	3,634	0.19	0.17	310	8.53	100.00	0.62
29 La Latinoamericana	3,202	2,643	0.16	0.13	558	21.12	97.12	1.15
30 Citibanamex Seguros	2,629	2,491	0.13	0.12	137	5.51	100.00	0.04
31 Seguros Azteca Daños	1,473	1,575	0.07	0.07	(102)	(6.50)	57.57	0.77
32 Interacciones	0	362	0.00	0.02	(362)	(100.00)		0.00
33 Agroasemex	0	573	0.00	0.03	(573)	(100.00)		0.00
Resto	148,262	158,819	7.25	7.53	(10,557)	(6.65)	87.55	0.63
Total	2,045,682	2,109,024	100.00	100.00	(63,342)	(3.00)	72.52	2.27

NE = No Existe

* % Extraordinario mayor de 1000%



Análisis de Primas Directas **Primer Trimestre 2018**

EstadisticAMIS (Primas)

R.C. y R.P. Aviones y Barcos

Cifras en miles

Compañías	Primas Directas		% Part. en Merc.		Incremento		% de Cartera		
	2018 Importe	2017 Importe	2018	2017	Importe	%	Por Operación	Total Cartera	
1	Inbursa	115,248	87,607	28.60	16.75	27,641	31.55	38.64	2.39
2	Mapfre México	112,582	204,809	27.94	39.16	(92,227)	(45.03)	47.69	2.40
3	GMX Seguros	97,549	98,568	24.21	18.85	(1,019)	(1.03)	20.25	3.70
4	Atlas	22,284	39,480	5.53	7.55	(17,196)	(43.56)	31.46	0.59
5	Afirme	20,782	17,472	5.16	3.34	3,310	18.95	8.73	1.17
	Grandes	368,445	447,936	91.43	85.64	(79,491)	(17.75)	27.81	2.08
6	G.N.P.	11,682	37,168	2.90	7.11	(25,486)	(68.57)	10.83	0.08
7	AXA Seguros	11,234	19,760	2.79	3.78	(8,526)	(43.15)	6.73	0.12
8	Allianz México	6,037	7,336	1.50	1.40	(1,299)	(17.70)	20.38	0.23
9	Ve Por Más	1,441	1,234	0.36	0.24	207	16.75	20.70	0.21
10	General de Seguros	1,138	1,715	0.28	0.33	(577)	(33.63)	6.60	0.17
11	Seguros Azteca Daños	1,086	1,474	0.27	0.28	(389)	(26.36)	42.43	0.56
12	Chubb de México	800	3,089	0.20	0.59	(2,289)	(74.10)	0.21	0.02
13	AIG Seguros	666	2,746	0.17	0.53	(2,080)	(75.74)	0.36	0.05
14	El Potosí	429	564	0.11	0.11	(135)	(23.91)	3.03	0.10
	Medianas	34,514	75,087	8.57	14.36	(40,573)	(54.03)	3.78	0.10
	Total	402,959	523,023	100.00	100.00	(120,064)	(22.96)	18.01	0.77

Análisis de Primas Directas **Primer Trimestre 2018**

EstadisticAMIS (Primas)

R.C. y R.P. Viajero

Cifras en miles

Compañías	Primas Directas		% Part. en Merc.		Incremento		% de Cartera		
	2018 Importe	2017 Importe	2018	2017	Importe	%	Por Operación	Total Cartera	
1	Banorte	22,319	21,037	27.51	25.29	1,282	6.09	20.97	0.17
2	AXA Seguros	17,802	29,221	21.94	35.13	(11,419)	(39.08)	10.67	0.19
3	Afirme	17,131	1,563	21.11	1.88	15,568	996.27	7.20	0.96
4	General de Seguros	7,109	11,017	8.76	13.25	(3,908)	(35.47)	41.24	1.09
5	GMX Seguros	5,529	1,120	6.81	1.35	4,409	393.71	1.15	0.21
	Grandes	69,890	63,957	86.14	76.89	5,933	9.28	6.92	0.25
6	Inbursa	2,155	3,594	2.66	4.32	(1,438)	(40.02)	0.72	0.04
7	El Potosí	1,920	1,887	2.37	2.27	33	1.75	13.56	0.46
8	HDI Seguros	1,868	1,521	2.30	1.83	347	22.83	5.32	0.09
9	G.N.P.	1,550	1,326	1.91	1.59	223	16.84	1.44	0.01
10	Atlas	1,404	7,723	1.73	9.28	(6,319)	(81.82)	1.98	0.04
11	Chubb de México	1,247	1,680	1.54	2.02	(433)	(25.76)	0.33	0.02
12	Seguros SURA	512	598	0.63	0.72	(86)	(14.37)	1.03	0.05
13	Ve Por Más	492	883	0.61	1.06	(391)	(44.30)	7.06	0.07
14	La Latinoamericana	95	10	0.12	0.01	85	833.88	2.88	0.03
	Medianas	11,243	19,222	13.86	23.11	(7,979)	(41.51)	1.16	0.03
	Total	81,133	83,179	100.00	100.00	(2,046)	(2.46)	4.10	0.14

NE = No Existe

* % Extraordinario mayor de 1000%



Análisis de Primas Directas						Primer Trimestre 2018			
EstadisticAMIS (Primas)									
R.C. y R.P. Otros									
Cifras en miles									
Compañías	Primas Directas		% Part. en Merc.		Incremento		% de Cartera		
	2018 Importe	2017 Importe	2018	2017	Importe	%	Por Operación	Total Cartera	
1	GMX Seguros	152,115	170,216	52.18	51.91	(18,101)	(10.63)	31.58	5.77
2	Afirme	101,300	82,816	34.75	25.26	18,484	22.32	42.58	5.70
3	Zurich Daños	31,652	47,508	10.86	14.49	(15,856)	(33.37)	26.22	1.46
4	AXA Seguros	4,151	17,464	1.42	5.33	(13,313)	(76.23)	2.49	0.04
5	Tokio Marine	1,340	466	0.46	0.14	874	187.56	15.76	0.70
	Grandes	290,558	318,469	99.68	97.12	(27,911)	(8.76)	28.61	1.81
6	Mapfre México	605	597	0.21	0.18	8	1.30	0.26	0.01
7	Qualitas	333	510	0.11	0.16	(177)	(34.72)	100.00	0.00
8	Chubb de México	1	8,334	0.00	2.54	(8,333)	(99.99)	0.00	0.00
	Medianas	939	9,441	0.32	2.88	(8,502)	(90.06)	0.15	0.01
	Total	291,497	327,910	100.00	100.00	(36,413)	(11.10)	17.85	0.85

Análisis de Primas Directas						Primer Trimestre 2018			
EstadisticAMIS (Primas)									
Marítimo y Transportes Total									
Cifras en miles									
Compañías	Primas Directas		% Part. en Merc.		Incremento		% de Cartera		
	2018 Importe	2017 Importe	2018	2017	Importe	%	Por Operación	Total Cartera	
1	Banorte	835,988	168,317	19.35	4.30	667,671	396.67	100.00	6.32
2	GMX Seguros	820,621	679,450	18.99	17.34	141,171	20.78	100.00	31.15
3	Mapfre México	347,335	319,084	8.04	8.15	28,251	8.85	100.00	7.41
4	G.N.P.	338,820	463,936	7.84	11.84	(125,115)	(26.97)	100.00	2.39
5	Chubb de México	336,110	347,526	7.78	8.87	(11,417)	(3.29)	100.00	6.60
	Grandes	2,678,874	1,978,314	62.01	50.50	700,561	35.41	100.00	6.73
6	Atlas	309,799	331,845	7.17	8.47	(22,046)	(6.64)	100.00	8.27
7	AXA Seguros	197,051	252,510	4.56	6.45	(55,460)	(21.96)	100.00	2.13
8	Zurich Daños	150,653	139,713	3.49	3.57	10,939	7.83	100.00	6.97
9	AIG Seguros	145,444	201,347	3.37	5.14	(55,903)	(27.76)	100.00	10.48
10	Inbursa	135,768	329,754	3.14	8.42	(193,986)	(58.83)	100.00	2.81
11	Sompo Japan	110,101	114,418	2.55	2.92	(4,317)	(3.77)	100.00	59.31
12	Tokio Marine	100,275	109,260	2.32	2.79	(8,985)	(8.22)	100.00	52.24
13	Allianz México	78,086	85,131	1.81	2.17	(7,045)	(8.28)	100.00	2.96
14	HDI-Gerling	78,012	35,888	1.81	0.92	42,124	117.38	100.00	29.13
15	Seguros SURA	73,526	71,733	1.70	1.83	1,793	2.50	100.00	6.88
	Medianas	1,378,714	1,671,600	31.91	42.67	(292,886)	(17.52)	100	5.36
16	Afirme	62,364	96,254	1.44	2.46	(33,890)	(35.21)	100.00	3.51
17	HDI Seguros	62,305	47,256	1.44	1.21	15,049	31.85	100.00	2.92
18	XL Seguros	59,396	67,947	1.37	1.73	(8,551)	(12.59)	100.00	21.73
19	El Potosí	18,142	18,945	0.42	0.48	(803)	(4.24)	100.00	4.32
20	General de Seguros	16,516	14,405	0.38	0.37	2,111	14.66	100.00	2.53
21	Primero Seguros	14,694	6,147	0.34	0.16	8,547	139.04	100.00	5.21
22	Berkley Seguros	10,945	0	0.25	0.00	10,945		100.00	31.15
23	FM Global	6,613	3,708	0.15	0.09	2,905	78.33	100.00	0.85
24	Ve Por Más	5,020	4,025	0.12	0.10	995	24.71	100.00	0.73
25	El Aguila	4,088	3,683	0.09	0.09	405	11.00	100.00	1.90
26	Seguros Azteca Daños	2,258	4,747	0.05	0.12	(2,489)	(52.43)	100.00	1.17
27	BBVA Bancomer	435	252	0.01	0.01	183	72.33	100.00	0.01
28	Interacciones	0	29	0.00	0.00	(29)	(100.00)		0.00
29	Agroasemex	0	78	0.00	0.00	(78)	(100.00)		0.00
	Resto	262,777	267,477	6.08	6.83	(4,700)	(1.76)	100.00	1.70
	Total	4,320,365	3,917,391	100.00	100.00	402,974	10.29	100.00	5.33

* % Extraordinario mayor de 1000%



Análisis de Primas Directas

Primer Trimestre 2018

EstadisticAMIS (Primas)

Marítimo y Transportes Carga

Cifras en miles

	Compañías	Primas Directas		% Part. en Merc.		Incremento		% de Cartera	
		2018 Importe	2017 Importe	2018	2017	Importe	%	Por Operación	Total Cartera
1	Banorte	835,988	168,317	29.15	7.43	667,671	396.67	100.00	6.32
2	Chubb de México	330,746	340,483	11.53	15.02	(9,738)	(2.86)	98.40	6.49
3	G.N.P.	329,540	370,088	11.49	16.33	(40,548)	(10.96)	97.26	2.33
4	AXA Seguros	155,090	157,729	5.41	6.96	(2,639)	(1.67)	78.71	1.68
5	Zurich Daños	150,362	141,614	5.24	6.25	8,748	6.18	99.81	6.95
	Grandes	1,801,725	1,178,231	62.83	51.99	623,494	52.92	96.94	4.10
6	AIG Seguros	145,352	201,331	5.07	8.88	(55,979)	(27.80)	99.94	10.48
7	Sompo Japan	110,101	114,418	3.84	5.05	(4,317)	(3.77)	100.00	59.31
8	Tokio Marine	100,275	109,260	3.50	4.82	(8,985)	(8.22)	100.00	52.24
9	Mapfre México	96,078	123,252	3.35	5.44	(27,174)	(22.05)	27.66	2.05
10	Atlas	92,963	94,502	3.24	4.17	(1,539)	(1.63)	30.01	2.48
11	HDI-Gerling	78,012	35,888	2.72	1.58	42,124	117.38	100.00	29.13
12	GMX Seguros	77,018	54,874	2.69	2.42	22,144	40.36	9.39	2.92
13	Seguros SURA	64,749	69,036	2.26	3.05	(4,287)	(6.21)	88.06	6.06
14	XL Seguros	59,396	67,947	2.07	3.00	(8,551)	(12.59)	100.00	21.73
15	HDI Seguros	58,935	45,709	2.06	2.02	13,226	28.94	94.59	2.77
	Medianas	882,879	916,217	30.79	40.43	-33,338	(3.64)	41.91	5.33
16	Allianz México	47,475	53,683	1.66	2.37	(6,208)	(11.56)	60.80	1.80
17	Inbursa	41,430	56,815	1.44	2.51	(15,386)	(27.08)	30.52	0.86
18	Afirme	22,392	17,095	0.78	0.75	5,297	30.99	35.91	1.26
19	El Potosi	18,778	18,324	0.65	0.81	453	2.47	103.50	4.47
20	Primero Seguros	14,694	6,147	0.51	0.27	8,547	139.04	100.00	5.21
21	General de Seguros	13,423	9,440	0.47	0.42	3,982	42.18	81.27	2.06
22	Berkley Seguros	10,945	0	0.38	0.00	10,945		100.00	31.15
23	FM Global	6,613	3,708	0.23	0.16	2,905	78.33	100.00	0.85
24	El Aguila	4,088	3,683	0.14	0.16	405	11.00	100.00	1.90
25	Ve Por Más	2,610	1,826	0.09	0.08	784	42.93	51.99	0.38
26	BBVA Bancomer	435	243	0.02	0.01	192	79.17	100.00	0.01
27	Seguros Azteca Daños	0	593	0.00	0.03	(593)	(100.00)	0.00	0.00
28	Interacciones	0	29	0.00	0.00	(29)	(100.00)		0.00
29	Agroasemex	0	78	0.00	0.00	(78)	(100.00)		0.00
	Resto	182,882	171,665	6.38	7.58	11,217	6.53	51.53	0.89
	Total	2,867,486	2,266,113	100.00	100.00	601,373	26.54	66.37	3.54

NE = No Existe

* % Extraordinario mayor de 1000%



EstadisticAMIS (Primas)

Marítimo y Transportes Cascos

Cifras en miles

Compañías	Primas Directas		% Part. en Merc.		Incremento		% de Cartera	
	2018 Importe	2017 Importe	2018	2017	Importe	%	Por Operación	Total Cartera
1 GMX Seguros	743,603	624,576	51.18	37.82	119,027	19.06	90.61	28.22
2 Mapfre México	251,258	195,833	17.29	11.86	55,425	28.30	72.34	5.36
3 Atlas	216,836	237,343	14.92	14.37	(20,507)	(8.64)	69.99	5.79
4 Inbursa	94,338	272,939	6.49	16.53	(178,601)	(65.44)	69.48	1.95
5 AXA Seguros	41,961	94,782	2.89	5.74	(52,821)	(55.73)	21.29	0.45
Grandes	1,347,995	1,425,472	92.78	86.33	(77,478)	(5.44)	74.45	5.36
6 Afirme	39,972	79,159	2.75	4.79	(39,187)	(49.50)	64.09	2.25
7 Allianz México	30,611	31,448	2.11	1.90	(837)	(2.66)	39.20	1.16
8 G.N.P.	9,281	93,848	0.64	5.68	(84,567)	(90.11)	2.74	0.07
9 Seguros SURA	8,777	2,697	0.60	0.16	6,080	225.46	11.94	0.82
10 Chubb de México	5,364	7,043	0.37	0.43	(1,679)	(23.84)	1.60	0.11
11 HDI Seguros	3,370	1,547	0.23	0.09	1,823	117.85	5.41	0.16
12 General de Seguros	3,093	4,964	0.21	0.30	(1,871)	(37.69)	18.73	0.47
13 Ve Por Más	2,410	2,199	0.17	0.13	211	9.59	48.01	0.35
14 Seguros Azteca Daños	2,258	4,154	0.16	0.25	(1,896)	(45.63)	100.00	1.17
15 Zurich Daños	291	(1,901)	0.02	(0.12)	2,191	(115.29)	0.19	0.01
Medianas	105,427	225,158	7.26	13.64	(119,731)	(53.18)	9.37	0.34
16 AIG Seguros	92	16	0.01	0.00	76	470.60	0.06	0.01
17 BBVA Bancomer	0	10	0.00	0.00	(10)	(100.00)	0.00	0.00
18 El Potosi	(635)	621	(0.04)	0.04	(1,256)	(202.27)	(3.50)	(0.15)
Resto	(544)	647	(0.04)	0.04	(1,190)	(184.03)	(0.33)	(0.01)
Total	1,452,878	1,651,278	100.00	100.00	(198,399)	(12.01)	46.86	2.23

NE = No Existe

* % Extraordinario mayor de 1000%

EstadisticAMIS (Primas)

INCENDIO PURO

Cifras en miles

Compañías	Primas Directas		% Part. en Merc.		Incremento		% de Cartera		
	2018 Importe	2017 Importe	2018	2017	Importe	%	Por Operación	Total Cartera	
1	AIG Seguros	619,890	878,472	14.17	19.65	(258,582)	(29.44)	100.00	44.68
2	Banorte	522,538	416,806	11.94	9.32	105,732	25.37	100.00	3.95
3	GMX Seguros	336,578	174,778	7.69	3.91	161,799	92.57	100.00	12.78
4	Zurich Daños	317,250	274,477	7.25	6.14	42,773	15.58	100.00	14.67
5	FM Global	312,061	306,956	7.13	6.87	5,106	1.66	100.00	40.29
	Grandes	2,108,317	2,051,488	48.19	45.88	56,829	2.77	100.00	10.44
6	AXA Seguros	291,244	492,071	6.66	11.01	(200,827)	(40.81)	100.00	3.15
7	Inbursa	283,901	181,208	6.49	4.05	102,693	56.67	100.00	5.88
8	Mapfre México	267,666	247,594	6.12	5.54	20,072	8.11	100.00	5.71
9	Chubb de México	212,380	108,594	4.85	2.43	103,786	95.57	100.00	4.17
10	Afirme	201,461	309,398	4.60	6.92	(107,937)	(34.89)	100.00	11.35
11	G.N.P.	191,021	134,491	4.37	3.01	56,530	42.03	100.00	1.35
12	Allianz México	171,744	127,611	3.93	2.85	44,134	34.58	100.00	6.52
13	BBVA Bancomer	135,011	124,586	3.09	2.79	10,425	8.37	100.00	1.80
14	Seguros SURA	112,931	73,303	2.58	1.64	39,628	54.06	100.00	10.57
15	Atlas	64,692	99,298	1.48	2.22	(34,606)	(34.85)	100.00	1.73
	Medianas	1,932,052	1,898,154	44.16	42.45	33,898	1.79	100	3.53
16	Seguros Azteca Daños	50,744	47,854	1.16	1.07	2,890	6.04	100.00	26.37
17	Patrimonial Inbursa	42,859	51,368	0.98	1.15	(8,509)	(16.57)	100.00	6.75
18	HDI-Gerling	40,497	38,542	0.93	0.86	1,955	5.07	100.00	15.12
19	HDI Seguros	37,960	28,395	0.87	0.64	9,565	33.68	100.00	1.78
20	General de Seguros	26,407	19,021	0.60	0.43	7,386	38.83	100.00	4.05
21	Zurich Santander	24,012	26,827	0.55	0.60	(2,814)	(10.49)	100.00	1.43
22	Sompo Japan	21,056	21,713	0.48	0.49	(657)	(3.03)	100.00	11.34
23	XL Seguros	18,360	219,583	0.42	4.91	(201,224)	(91.64)	100.00	6.72
24	El Aguila	17,445	13,381	0.40	0.30	4,064	30.37	100.00	8.12
25	Assurant Daños	14,084	12,912	0.32	0.29	1,172	9.08	100.00	7.29
26	Citibanamex Seguros	12,610	12,299	0.29	0.28	311	2.53	100.00	0.18
27	El Potosi	8,962	10,254	0.20	0.23	(1,292)	(12.60)	100.00	2.13
28	Tokio Marine	8,241	10,439	0.19	0.23	(2,197)	(21.05)	100.00	4.29
29	Ve Por Más	5,961	2,840	0.14	0.06	3,120	109.85	100.00	0.87
30	Primero Seguros	4,730	4,518	0.11	0.10	212	4.70	100.00	1.68
31	Berkley Seguros	901	0	0.02	0.00	901		100.00	2.57
32	La Latinoamericana	252	194	0.01	0.00	57	29.56	100.00	0.09
33	Interacciones	0	11	0.00	0.00	(11)	(100.00)		0.00
34	Agroasemex	0	1,361	0.00	0.03	(1,361)	(100.00)		0.00
	Resto	335,080	521,512	7.66	11.66	(186,432)	(35.75)	100.00	2.11
	Total	4,375,449	4,471,154	100.00	100.00	(95,705)	(2.14)	100.00	4.82

NE = No Existe

* % Extraordinario mayor de 1000%

EstadisticAMIS (Primas)

Terremoto y Otros Riesgos Catastróficos Total

Cifras en miles

Compañías	Primas Directas		% Part. en Merc.		Incremento		% de Cartera	
	2018 Importe	2017 Importe	2018	2017	Importe	%	Por Operación	Total Cartera
1 Banorte	780,196	829,209	14.08	18.24	(49,013)	(5.91)	100.00	5.89
2 GMX Seguros	716,816	419,830	12.93	9.24	296,987	70.74	100.00	27.21
3 AXA Seguros	500,240	658,015	9.03	14.47	(157,776)	(23.98)	100.00	5.40
4 Agroasemex	458,500	0	8.27	0.00	458,500		100.00	86.93
5 Mapfre México	442,269	457,751	7.98	10.07	(15,482)	(3.38)	100.00	9.43
Grandes	2,898,021	2,364,806	52.29	52.02	533,216	22.55	100.00	9.55
6 Inbursa	431,889	421,152	7.79	9.26	10,738	2.55	100.00	8.94
7 G.N.P.	325,195	261,300	5.87	5.75	63,896	24.45	100.00	2.30
8 Zurich Daños	276,410	266,084	4.99	5.85	10,326	3.88	100.00	12.78
9 Afirme	261,765	24,860	4.72	0.55	236,905	952.97	100.00	14.74
10 Chubb de México	228,587	112,362	4.12	2.47	116,225	103.44	100.00	4.49
11 BBVA Bancomer	197,133	216,905	3.56	4.77	(19,772)	(9.12)	100.00	2.62
12 Atlas	144,821	167,326	2.61	3.68	(22,505)	(13.45)	100.00	3.86
13 AIG Seguros	137,559	71,059	2.48	1.56	66,499	93.58	100.00	9.92
14 Seguros SURA	95,627	78,260	1.73	1.72	17,367	22.19	100.00	8.95
15 Allianz México	75,987	104,544	1.37	2.30	(28,557)	(27.32)	100.00	2.89
Medianas	2,174,974	1,723,853	39.25	37.92	451,122	26.17	100	4.9
16 HDI-Gerling	60,590	57,442	1.09	1.26	3,148	5.48	100.00	22.63
17 Assurant Daños	54,302	49,783	0.98	1.10	4,519	9.08	100.00	28.10
18 FM Global	49,305	64,875	0.89	1.43	(15,570)	(24.00)	100.00	6.37
19 Seguros Azteca Daños	45,570	42,145	0.82	0.93	3,425	8.13	100.00	23.68
20 Citibanamex Seguros	41,999	37,206	0.76	0.82	4,793	12.88	100.00	0.60
21 HDI Seguros	38,169	30,525	0.69	0.67	7,644	25.04	100.00	1.79
22 Zurich Santander	33,459	35,309	0.60	0.78	(1,850)	(5.24)	100.00	1.99
23 Sompo Japan	31,637	27,413	0.57	0.60	4,224	15.41	100.00	17.04
24 Patrimonial Inbursa	23,513	29,055	0.42	0.64	(5,541)	(19.07)	100.00	3.70
25 Tokio Marine	22,324	23,342	0.40	0.51	(1,019)	(4.36)	100.00	11.63
26 El Aguila	20,148	16,862	0.36	0.37	3,286	19.49	100.00	9.38
27 XL Seguros	17,281	18,211	0.31	0.40	(930)	(5.11)	100.00	6.32
28 General de Seguros	13,866	13,020	0.25	0.29	846	6.50	100.00	2.13
29 Ve Por Más	7,313	3,766	0.13	0.08	3,547	94.18	100.00	1.06
30 El Potosi	5,980	6,145	0.11	0.14	(165)	(2.69)	100.00	1.42
31 Primero Seguros	2,512	2,071	0.05	0.05	441	21.29	100.00	0.89
32 Berkley Seguros	1,067	0	0.02	0.00	1,067		100.00	3.04
33 Interacciones	0	48	0.00	0.00	(48)	(100.00)		0.00
Resto	469,034	457,219	8.46	10.06	11,815	2.58	100.00	2.95
Total	5,542,030	4,545,877	100.00	100.00	996,152	21.91	100.00	6.12

NE = No Existe

* % Extraordinario mayor de 1000%

EstadisticAMIS (Primas)

T. y O.R.C. Terremoto y Erupción Volcánica

Cifras en miles

Compañías	Primas Directas		% Part. en Merc.		Incremento		% de Cartera		
	2018 Importe	2017 Importe	2018	2017	Importe	%	Por Operación	Total Cartera	
1	Agroasemex	458,500	0	16.34	0.00	458,500		100.00	86.93
2	Banorte	365,716	386,007	13.03	19.16	(20,292)	(5.26)	46.87	2.76
3	GMX Seguros	364,920	200,897	13.00	9.97	164,023	81.65	50.91	13.85
4	Inbursa	202,869	188,432	7.23	9.35	14,437	7.66	46.97	4.20
5	Zurich Daños	195,171	190,690	6.95	9.47	4,480	2.35	70.61	9.03
	Grandes	1,587,174	966,026	56.55	47.95	621,148	64.30	59.58	6.79
6	Mapfre México	151,323	168,358	5.39	8.36	(17,035)	(10.12)	34.22	3.23
7	Afirme	142,220	10,823	5.07	0.54	131,397	*	54.33	8.01
8	AXA Seguros	120,414	155,807	4.29	7.73	(35,392)	(22.72)	24.07	1.30
9	Chubb de México	119,219	53,698	4.25	2.67	65,521	122.02	52.15	2.34
10	BBVA Bancomer	115,617	118,006	4.12	5.86	(2,389)	(2.02)	58.65	1.54
11	G.N.P.	112,517	86,239	4.01	4.28	26,278	30.47	34.60	0.79
12	Atlas	71,172	79,554	2.54	3.95	(8,383)	(10.54)	49.14	1.90
13	AIG Seguros	67,175	31,983	2.39	1.59	35,191	110.03	48.83	4.84
14	Seguros SURA	44,660	38,565	1.59	1.91	6,095	15.80	46.70	4.18
15	Assurant Daños	44,079	40,411	1.57	2.01	3,668	9.08	81.17	22.81
	Medianas	988,396	783,444	35.22	38.89	204,952	26.16	41.4	2.02
16	HDI-Gerling	40,493	38,542	1.44	1.91	1,951	5.06	66.83	15.12
17	FM Global	37,673	62,064	1.34	3.08	(24,390)	(39.30)	76.41	4.86
18	Allianz México	25,683	46,894	0.92	2.33	(21,212)	(45.23)	33.80	0.98
19	Zurich Santander	22,876	23,706	0.82	1.18	(831)	(3.50)	68.37	1.36
20	Citibanamex Seguros	19,193	16,774	0.68	0.83	2,419	14.42	45.70	0.27
21	Seguros Azteca Daños	18,011	18,062	0.64	0.90	(51)	(0.28)	39.52	9.36
22	Sompo Japan	13,316	10,623	0.47	0.53	2,693	25.35	42.09	7.17
23	Tokio Marine	12,270	12,628	0.44	0.63	(358)	(2.83)	54.96	6.39
24	HDI Seguros	11,542	8,878	0.41	0.44	2,663	30.00	30.24	0.54
25	XL Seguros	10,391	11,053	0.37	0.55	(662)	(5.99)	60.13	3.80
26	El Aguila	8,847	7,769	0.32	0.39	1,078	13.88	43.91	4.12
27	General de Seguros	5,119	4,979	0.18	0.25	140	2.82	36.92	0.79
28	Ve Por Más	2,221	571	0.08	0.03	1,650	288.66	30.37	0.32
29	El Potosi	1,950	2,196	0.07	0.11	(247)	(11.23)	32.60	0.46
30	Berkley Seguros	848	0	0.03	0.00	848		79.45	2.41
31	Primero Seguros	530	405	0.02	0.02	125	30.86	21.09	0.19
32	Interacciones	0	39	0.00	0.00	(39)	(100.00)		0.00
	Resto	230,961	265,183	8.23	13.16	(34,222)	(12.91)	49.43	1.31
	Total	2,806,531	2,014,653	100.00	100.00	791,878	39.31	50.86	3.12

NE = No Existe

* % Extraordinario mayor de 1000%

EstadisticAMIS (Primas)

Terremoto Otros (Incluye: Huracán y Otros Riesgos Hidrometeorológicos)

Cifras en miles

Compañías	Primas Directas		% Part. en Merc.		Incremento		% de Cartera	
	2018 Importe	2017 Importe	2018	2017	Importe	%	Por Operación	Total Cartera
1 Banorte	414,480	443,202	15.15	17.51	(28,721)	(6.48)	53.13	3.13
2 AXA Seguros	379,826	502,209	13.89	19.84	(122,383)	(24.37)	75.93	4.10
3 GMX Seguros	351,897	218,933	12.86	8.65	132,963	60.73	49.09	13.36
4 Mapfre México	290,947	289,393	10.64	11.43	1,553	0.54	65.78	6.20
5 Inbursa	229,021	232,720	8.37	9.19	(3,699)	(1.59)	53.03	4.74
Grandes	1,666,170	1,686,457	60.91	66.63	(20,287)	(1.20)	58.03	4.81
6 G.N.P.	212,678	175,061	7.77	6.92	37,618	21.49	65.40	1.50
7 Afirme	119,545	14,037	4.37	0.55	105,508	751.66	45.67	6.73
8 Chubb de México	109,368	58,665	4.00	2.32	50,704	86.43	47.85	2.15
9 BBVA Bancomer	81,515	98,898	2.98	3.91	(17,383)	(17.58)	41.35	1.09
10 Zurich Daños	81,240	75,394	2.97	2.98	5,846	7.75	29.39	3.76
11 Atlas	73,649	87,772	2.69	3.47	(14,123)	(16.09)	50.86	1.97
12 AIG Seguros	70,384	39,076	2.57	1.54	31,308	80.12	51.17	5.07
13 Seguros SURA	50,967	39,695	1.86	1.57	11,272	28.40	53.30	4.77
14 Allianz México	50,305	57,650	1.84	2.28	(7,345)	(12.74)	66.20	1.91
15 Seguros Azteca Daños	27,559	24,083	1.01	0.95	3,476	14.43	60.48	14.32
Medianas	877,211	670,330	32.07	26.48	206,880	30.86	49.04	2.21
16 HDI Seguros	26,627	21,647	0.97	0.86	4,980	23.01	69.76	1.25
17 Patrimonial Inbursa	23,513	29,055	0.86	1.15	(5,541)	(19.07)	100.00	3.70
18 Citibanamex Seguros	22,806	20,433	0.83	0.81	2,374	11.62	54.30	0.32
19 HDI-Gerling	20,097	18,900	0.73	0.75	1,197	6.33	33.17	7.50
20 Sompo Japan	18,321	16,790	0.67	0.66	1,531	9.12	57.91	9.87
21 FM Global	11,632	2,812	0.43	0.11	8,820	313.72	23.59	1.50
22 El Aguila	11,301	9,093	0.41	0.36	2,208	24.28	56.09	5.26
23 Zurich Santander	10,583	11,602	0.39	0.46	(1,019)	(8.78)	31.63	0.63
24 Assurant Daños	10,223	9,372	0.37	0.37	851	9.08	18.83	5.29
25 Tokio Marine	10,053	10,715	0.37	0.42	(661)	(6.17)	45.04	5.24
26 General de Seguros	8,747	8,041	0.32	0.32	706	8.78	63.08	1.34
27 XL Seguros	6,890	7,159	0.25	0.28	(268)	(3.75)	39.87	2.52
28 Ve Por Más	5,092	3,194	0.19	0.13	1,897	59.39	69.63	0.74
29 El Potosi	4,030	3,949	0.15	0.16	82	2.06	67.40	0.96
30 Primero Seguros	1,983	1,667	0.07	0.07	316	18.97	78.91	0.70
31 Berkley Seguros	219	0	0.01	0.00	219		20.55	0.62
32 Interacciones	0	9	0.00	0.00	(9)	(100.00)		0.00
Resto	192,118	174,436	7.02	6.89	17,681	10.14	45.37	1.23
Total	2,735,499	2,531,224	100.00	100.00	204,274	8.07	53.81	3.04

NE = No Existe

* % Extraordinario mayor de 1000%

Análisis de Primas Directas		Primer Trimestre 2018							
EstadisticAMIS (Primas)									
Agrícola y de Animales Total									
Cifras en miles									
Compañías	Primas Directas		% Part. en Merc.		Incremento		% de Cartera		Total Cartera
	2018 Importe	2017 Importe	2018	2017	Importe	%	Por Operación	Total	
1	Tlaloc Seguros	334,402	13,319	51.25	7.58	321,083	2,410.67	100	100
2	General de Seguros	138,981	120,423	21.3	69	18,558	15	100	21.32
3	Banorte	71,495	0	10.96	0	71,495		100	0.54
4	Agroasemex	66,838	0	10.24	0	66,838		100	12.67
5	Mapfre México	38,002	39,795	5.82	22.64	(1,794)	(4.51)	100	0.81
	Grandes	649,718	173,538	99.58	98.74	476,181	274.4	100	3.34
6	Seguros SURA	2,764	2,214	0.42	1.26	550	24.83	100	0.26
	Medianas	2,764	2,214	0.42	1.26	550	24.83	100	0.26
	Total	652,482	175,752	100	100	476,730	271.25	100	3.18

Análisis de Primas Directas		Primer Trimestre 2018							
EstadisticAMIS (Primas)									
A. y de A. Agrícola									
Cifras en miles									
Compañías	Primas Directas		% Part. en Merc.		Incremento		% de Cartera		Total Cartera
	2018 Importe	2017 Importe	2018	2017	Importe	%	Por Operación	Total	
1	Tlaloc Seguros	151,014	13,167	34.27	8	137,848	1,047	45.16	45.16
2	General de Seguros	114,102	114,017	25.89	68.15	85	0.07	82.10	17.50
3	Banorte	71,495	0	16.23	0.00	71,495		100.00	0.54
4	Agroasemex	64,002	0	14.52	0.00	64,002		95.76	12.13
5	Mapfre México	37,271	37,912	8.46	22.66	(641)	(1.69)	98.08	0.79
	Grandes	437,884	165,095	99.37	98.68	272,789	165.23	67.40	2.25
6	Seguros SURA	2,764	2,214	0.63	1.32	550	24.83	100.00	0.26
	Medianas	2,764	2,214	0.63	1.32	550	24.83	100	0.26
	Total	440,648	167,309	100.00	100.00	273,339	163.37	67.53	2.15

Análisis de Primas Directas		Primer Trimestre 2018							
EstadisticAMIS (Primas)									
A. y de A. Pecuario									
Cifras en miles									
Compañías	Primas Directas		% Part. en Merc.		Incremento		% de Cartera		Total Cartera
	2018 Importe	2017 Importe	2018	2017	Importe	%	Por Operación	Total	
1	Tlaloc Seguros	183,388	153	87.17	1.81	183,235	120,051.94	54.84	54.84
2	General de Seguros	24,368	6,406	11.58	75.88	17,962	280.37	17.53	3.74
3	Agroasemex	1,884	0	0.90	0	1,884		2.82	0.36
4	Mapfre México	731	1,884	0.35	22	(1,152)	(61)	1.92	0.02
5	Patria	0	0	0.00	0	0			
	Grandes	210,371	8,443	100.00	100.00	201,928	2,391.76	36.38	3.39
	Total	210,371	8,443	100.00	100.00	201,928	2,391.76	36.38	3.39

Análisis de Primas Directas		Primer Trimestre 2018							
EstadisticAMIS (Primas)									
A. y de A. Otros									
Cifras en miles									
Compañías	Primas Directas		% Part. en Merc.		Incremento		% de Cartera		Total Cartera
	2018 Importe	2017 Importe	2018	2017	Importe	%	Por Operación	Total	
1	Agroasemex	953	0	65.09		953		1.43	0.18
2	General de Seguros	511	0	34.91		511		0.37	0.08
	Grandes	1,464	0	100.00		1,464		0.71	0.12
	Total	1,464	0	100.00		1,464		0.27	0.10

NE = No Existe, ND = NO DISPONIBLE
 *% Extraordinario mayor de 1000%



EstadisticAMIS (Primas)

Automóviles Total

Cifras en miles

Compañías	Primas Directas		% Part. en Merc.		Incremento		% de Cartera		
	2018 Importe	2017 Importe	2018	2017	Importe	%	Por Operación	Total Cartera	
1	Qualitas	8,615,264	8,791,155	30.06	33.51	(175,890)	(2.00)	6.36	100.00
2	Chubb de México	2,960,156	2,437,537	10.33	9.29	522,619	21.44	2.19	100.00
3	G.N.P.	2,867,963	3,278,838	10.01	12.50	(410,875)	(12.53)	2.12	100.00
4	AXA Seguros	2,648,819	1,980,129	9.24	7.55	668,691	33.77	1.96	100.00
5	HDI Seguros	1,894,902	1,355,905	6.61	5.17	538,996	39.75	1.40	100.00
	Grandes	18,987,105	17,843,564	66.24	68.02	1,143,541	6.41	14.02	100.00
6	Banorte	1,598,831	1,355,091	5.58	5.17	243,741	17.99	1.18	100.00
7	BBVA Bancomer	1,262,418	1,307,978	4.40	4.99	(45,561)	(3.48)	0.93	100.00
8	Inbursa	1,205,400	1,180,059	4.21	4.50	25,340	2.15	0.89	100.00
9	Zurich Daños	1,132,322	830,032	3.95	3.16	302,290	36.42	0.84	100.00
10	Mapfre México	915,218	792,465	3.19	3.02	122,753	15.49	0.68	100.00
11	Atlas	756,307	733,365	2.64	2.80	22,942	3.13	0.56	100.00
12	Afirme	562,449	450,986	1.96	1.72	111,463	24.72	0.42	100.00
13	ANA	456,612	356,048	1.59	1.36	100,565	28.24	0.34	100.00
14	General de Seguros	324,547	352,127	1.13	1.34	(27,580)	(7.83)	0.24	100.00
15	Seguros SURA	314,812	149,802	1.10	0.57	165,010	110.15	0.23	100.00
	Medianas	8,528,916	7,507,954	29.75	28.62	1,020,962	13.6	6.3	100.00
16	Primero Seguros	236,886	148,570	0.83	0.57	88,316	59.44	0.17	100.00
17	El Potosi	223,750	167,897	0.78	0.64	55,853	33.27	0.17	100.00
18	El Águila	154,498	142,409	0.54	0.54	12,089	8.49	0.11	100.00
19	AIG Seguros	138,003	131,749	0.48	0.50	6,255	4.75	0.10	100.00
20	Ve Por Más	70,696	49,070	0.25	0.19	21,626	44.07	0.05	100.00
21	Cardif Seguros Generale	60,418	28,973	0.21	0.11	31,445	108.53	0.04	100.00
22	La Latinoamericana	56,558	45,124	0.20	0.17	11,434	25.34	0.04	100.00
23	Zurich Santander	48,119	45,930	0.17	0.18	2,189	4.77	0.04	100.00
24	Patrimonial Daños	41,341	55,099	0.14	0.21	(13,759)	(24.97)	0.03	100.00
25	Allianz México	39,874	19,221	0.14	0.07	20,654	107.45	0.03	100.00
26	Seguros Azteca Daños	37,890	22,250	0.13	0.08	15,640	70.29	0.03	100.00
27	Citibanamex Seguros	27,741	14,814	0.10	0.06	12,927	87.27	0.02	100.00
28	Tokio Marine	5,198	4,603	0.02	0.02	596	12.95	0.00	100.00
29	Patrimonial Inbursa	4,047	4,466	0.01	0.02	(419)	(9.39)	0.00	100.00
30	Virginia Surety	2,326	0	0.01	0.00	2,326		0.00	100.00
31	Sompo Japan	916	1,009	0.00	0.00	(92)	(9.15)	0.00	100.00
32	Assurant Daños	269	0	0.00	0.00	269		0.00	100.00
	Resto	1,148,530	881,182	4.01	3.36	267,348	30.34	0.85	100.00
	Total	28,664,551	26,232,700	100.00	100.00	2,431,850	9.27	21.16	100.00

NE = No Existe

* % Extraordinario mayor de 1000%

EstadisticAMIS (Primas)

Autimóviles Residentes

Cifras en miles

Compañías	Primas Directas		% Part. en Merc.		Incremento		% de Cartera		
	2018 Importe	2017 Importe	2018	2017	Importe	%	Por Operación	Total Cartera	
1	Qualitas	4,316,258	5,098,040	22.49	28.42	(781,783)	(15.33)	50.10	50.10
2	Chubb de México	2,363,423	1,838,431	12.32	10.25	524,992	28.56	79.84	46.39
3	G.N.P.	2,146,806	2,627,442	11.19	14.64	(480,636)	(18.29)	74.85	15.16
4	AXA Seguros	1,719,868	1,249,040	8.96	6.96	470,827	37.70	64.93	18.58
5	HDI Seguros	1,378,021	997,728	7.18	5.56	380,293	38.12	72.72	64.66
	Grandes	11,924,375	11,810,681	62.13	65.83	113,694	0.96	62.80	30.37
6	Banorte	1,200,832	1,026,956	6.26	5.72	173,875	16.93	75.11	9.07
7	Zurich Daños	1,123,528	819,534	5.85	4.57	303,994	37.09	99.22	51.96
8	BBVA Bancomer	1,059,298	1,087,714	5.52	6.06	(28,416)	(2.61)	83.91	14.10
9	Inbursa	815,742	791,468	4.25	4.41	24,274	3.07	67.67	16.89
10	Mapfre México	792,702	620,590	4.13	3.46	172,112	27.73	86.61	16.91
11	Atlas	455,120	385,252	2.37	2.15	69,868	18.14	60.18	12.14
12	Afirme	358,784	324,751	1.87	1.81	34,033	10.48	63.79	20.21
13	ANA	255,402	195,854	1.33	1.09	59,547	30.40	55.93	55.93
14	Seguros SURA	252,662	108,927	1.32	0.61	143,736	131.96	80.26	23.65
15	Primero Seguros	163,431	100,104	0.85	0.56	63,327	63.26	68.99	57.93
	Medianas	6,477,501	5,461,151	33.75	30.44	1,016,351	18.61	76.74	16.29
16	El Aguila	147,306	132,088	0.77	0.74	15,218	11.52	95.34	68.59
17	General de Seguros	145,671	156,891	0.76	0.87	(11,220)	(7.15)	44.88	22.34
18	AIG Seguros	134,668	116,378	0.70	0.65	18,289	15.72	97.58	9.71
19	El Potosi	113,677	88,936	0.59	0.50	24,740	27.82	50.81	27.06
20	Zurich Santander	48,119	45,930	0.25	0.26	2,189	4.77	100.00	2.86
21	La Latinoamericana	46,192	30,960	0.24	0.17	15,231	49.20	81.67	16.61
22	Ve Por Más	41,673	30,966	0.22	0.17	10,706	34.57	58.95	6.07
23	Allianz México	39,874	19,221	0.21	0.11	20,654	107.45	100.00	1.51
24	Seguros Azteca Daños	37,890	22,250	0.20	0.12	15,640	70.29	100.00	19.69
25	Citibanamex Seguros	27,741	14,814	0.14	0.08	12,927	87.27	100.00	0.39
26	Patrimonial Inbursa	4,047	4,466	0.02	0.02	(419)	(9.39)	100.00	0.64
27	Tokio Marine	1,550	1,180	0.01	0.01	370	31.39	29.81	0.81
28	Sompo Japan	650	678	0.00	0.00	(29)	(4.24)	70.91	0.35
29	Assurant Daños	269	0	0.00	0.00	269		100.00	0.14
30	Patrimonial Daños	(5)	4,446	0.00	0.02	(4,452)	(100.12)	(0.01)	(0.01)
	Resto	789,319	669,205	4.11	3.73	120,114	17.95	67.27	4.80
	Total	19,191,196	17,941,038	100.00	100.00	1,250,158	6.97	67.10	20.10

NE = No Existe

* % Extraordinario mayor de 1000%

EstadisticAMIS (Primas)

Autimóviles Camiones

Cifras en miles

Compañías	Primas Directas		% Part. en Merc.		Incremento		% de Cartera		
	2018 Importe	2017 Importe	2018	2017	Importe	%	Por Operación	Total Cartera	
1	Qualitas	4,105,174	3,500,091	46.87	46.57	605,083	17.29	47.65	47.65
2	AXA Seguros	923,715	720,153	10.55	9.58	203,562	28.27	34.87	9.98
3	G.N.P.	579,013	535,295	6.61	7.12	43,718	8.17	20.19	4.09
4	Chubb de México	525,551	417,361	6.00	5.55	108,190	25.92	17.75	10.32
5	HDI Seguros	448,695	298,790	5.12	3.98	149,905	50.17	23.68	21.05
	Grandes	6,582,149	5,471,690	75.15	72.80	1,110,458	20.29	34.67	16.77
6	Banorte	398,000	328,133	4.54	4.37	69,867	21.29	24.89	3.01
7	Inbursa	385,615	386,109	4.40	5.14	(494)	(0.13)	31.99	7.99
8	Atlas	275,629	325,952	3.15	4.34	(50,323)	(15.44)	36.44	7.35
9	BBVA Bancomer	203,119	220,265	2.32	2.93	(17,145)	(7.78)	16.09	2.70
10	Afirme	186,869	112,775	2.13	1.50	74,094	65.70	33.22	10.52
11	General de Seguros	173,939	187,322	1.99	2.49	(13,382)	(7.14)	53.59	26.68
12	ANA	158,048	123,941	1.80	1.65	34,107	27.52	34.61	34.61
13	El Potosi	108,787	77,794	1.24	1.04	30,993	39.84	48.62	25.89
14	Mapfre México	103,759	150,911	1.18	2.01	(47,152)	(31.24)	11.34	2.21
15	Primero Seguros	73,455	48,465	0.84	0.64	24,989	51.56	31.01	26.04
	Medianas	2,067,221	1,961,666	23.6	26.1	105,555	5.38	27.41	5.5
16	Seguros SURA	58,463	38,173	0.67	0.51	20,290	53.15	18.57	5.47
17	Ve Por Más	27,852	16,647	0.32	0.22	11,205	67.31	39.40	4.05
18	AIG Seguros	9,732	11,508	0.11	0.15	(1,776)	(15.43)	7.05	0.70
19	La Latinoamericana	7,728	11,094	0.09	0.15	(3,366)	(30.34)	13.66	2.78
20	Tokio Marine	3,513	3,421	0.04	0.05	92	2.70	67.58	1.83
21	Zurich Daños	1,194	1,164	0.01	0.02	30	2.55	0.11	0.06
22	Patrimonial Daños	538	537	0.01	0.01	1	0.10	1.30	1.30
23	Sompo Japan	267	330	0.00	0.00	(64)	(19.25)	29.09	0.14
	Resto	109,286	82,874	1.25	1.10	26,412	31.87	6.21	1.82
	Total	8,758,655	7,516,231	100.00	100.00	1,242,425	16.53	30.96	10.57

NE = No Existe

* % Extraordinario mayor de 1000%



Análisis de Primas Directas

Primer Trimestre 2018

EstadisticAMIS (Primas)

Autimóviles Turistas

Cifras en miles

Compañías	Primas Directas		% Part. en Merc.		Incremento		% de Cartera	
	2018 Importe	2017 Importe	2018	2017	Importe	%	Por Operación	Total Cartera
1 Chubb de México	71,096	181,580	25.18	44.23	(110,484)	(60.85)	2.40	1.40
2 Qualitas	67,150	67,854	23.78	16.53	(704)	(1.04)	0.78	0.78
3 G.N.P.	41,516	38,122	14.70	9.29	3,395	8.90	1.45	0.29
4 HDI Seguros	38,782	36,839	13.73	8.97	1,942	5.27	2.05	1.82
5 ANA	31,418	29,956	11.13	7.30	1,462	4.88	6.88	6.88
Grandes	249,962	354,351	88.51	86.31	(104,388)	(29.46)	1.49	0.82
6 Mapfre México	18,757	20,964	6.64	5.11	(2,207)	(10.53)	2.05	0.40
7 El Aguila	7,143	10,270	2.53	2.50	(3,128)	(30.45)	4.62	3.33
8 General de Seguros	4,388	5,774	1.55	1.41	(1,386)	(24.01)	1.35	0.67
9 AXA Seguros	3,911	9,877	1.38	2.41	(5,967)	(60.41)	0.15	0.04
10 Atlas	2,685	4,002	0.95	0.97	(1,317)	(32.90)	0.36	0.07
11 El Potosi	1,286	1,166	0.46	0.28	120	10.25	0.57	0.31
12 Zurich Daños	1,079	1,035	0.38	0.25	44	4.28	0.10	0.05
13 Inbursa	234	202	0.08	0.05	32	15.70	0.02	0.00
14 Seguros SURA	157	144	0.06	0.04	13	8.90	0.05	0.01
15 Tokio Marine	134	0	0.05	0.00	134	*	2.57	0.07
Medianas	39,774	53,436	14.08	13.02	(13,662)	(25.57)	0.52	0.15
16 Banorte	0	1	0.00	0.00	(1)	(100.00)	0.00	0.00
17 AIG Seguros	(7,340)	2,757	(2.60)	0.67	(10,098)	(366.21)	(5.32)	(0.53)
Resto	(7,340)	2,759	(2.60)	0.67	(10,099)	(366.08)	(0.42)	(0.05)
Total	282,396	410,546	100.00	100.00	(128,150)	(31.21)	1.08	0.39

Análisis de Primas Directas

Primer Trimestre 2018

EstadisticAMIS (Primas)

Autimóviles (Otros más Obligatorios)

Cifras en miles

Compañías	Primas Directas		% Part. en Merc.		Incremento		% de Cartera	
	2018 Importe	2017 Importe	2018	2017	Importe	%	Por Operación	Total Cartera
1 Qualitas	126,683	125,170	29.30	34.30	1,513	1.21	1.47	1.47
2 G.N.P.	100,627	77,979	23.28	21.37	22,647	29.04	3.51	0.71
3 Cardif Seguros Gene	60,418	28,973	13.98	7.94	31,445	108.53	100.00	50.33
4 Patrimonial Daños	40,808	50,116	9.44	13.73	(9,308)	(18.57)	98.71	98.71
5 HDI Seguros	29,405	22,549	6.80	6.18	6,856	30.41	1.55	1.38
Grandes	357,941	304,787	82.80	83.53	53,154	17.44	2.66	1.43
6 Atlas	22,873	18,160	5.29	4.98	4,713	25.96	3.02	0.61
7 Afirme	16,796	13,460	3.89	3.69	3,336	24.78	2.99	0.95
8 ANA	11,745	6,297	2.72	1.73	5,448	86.51	2.57	2.57
9 Zurich Daños	6,520	8,298	1.51	2.27	(1,778)	(21.43)	0.58	0.30
10 Inbursa	3,808	2,280	0.88	0.62	1,528	67.00	0.32	0.08
11 Seguros SURA	3,529	2,557	0.82	0.70	972	37.99	1.12	0.33
12 La Latinoamericana	2,638	3,070	0.61	0.84	(432)	(14.08)	4.66	0.95
13 Virginia Surety	2,326	0	0.54	0.00	2,326		100.00	35.98
14 AXA Seguros	1,326	1,057	0.31	0.29	268	25.38	0.05	0.01
15 Ve Por Más	1,172	1,457	0.27	0.40	(285)	(19.57)	1.66	0.17
Medianas	72,732	56,637	16.82	15.52	16,095	28.42	1.01	0.3
16 AIG Seguros	944	1,105	0.22	0.30	(161)	(14.58)	0.68	0.07
17 General de Seguros	549	2,140	0.13	0.59	(1,591)	(74.35)	0.17	0.08
18 Chubb de México	86	165	0.02	0.05	(79)	(47.93)	0.00	0.00
19 El Aguila	50	50	0.01	0.01	(1)	(1.44)	0.03	0.02
20 Tokio Marine	2	2	0.00	0.00	(1)	(21.39)	0.04	0.00
Resto	1,630	3,463	0.38	0.95	(1,833)	(52.92)	0.05	0.02
Total	432,303	364,886	100.00	100.00	67,417	18.48	1.78	0.76

NE = No Existe

* % Extraordinario mayor de 1000%



Análisis de Primas Directas **Primer Trimestre 2018**

EstadisticAMIS (Primas)

Crédito Total

Cifras en miles

Compañías	Primas Directas		% Part. en Merc.		Incremento		% de Cartera	
	2018	2017	2018	2017	Importe	%	Por	Total
	Importe	Importe					Operación	Cartera
1 Atradius	114,818	118,651	54.44	56.26	(3,833)	(3.23)	100.00	100.00
2 Solucion Crédito	87,053	81,360	41.28	38.58	5,694	7.00	100.00	100.00
3 AIG Seguros	9,023	10,890	4.28	5.16	(1,867)	(17.14)	100.00	0.65
Grandes	210,894	210,900	100.00	100.00	(6)	0.00	100.00	13.27
Total	210,894	210,900	100.00	100.00	(6)	0.00	100.00	3.95

Análisis de Primas Directas **Primer Trimestre 2018**

EstadisticAMIS (Primas)

Crédito a la Vivienda

Cifras en miles

Compañías	Primas Directas		% Part. en Merc.		Incremento		% de Cartera	
	2018	2017	2018	2017	Importe	%	Por	Total
	Importe	Importe					Operación	Cartera
1 SHF Cred Vivienda	124,470	134,881	89.80	89.48	(10,411)	(7.72)	100.00	100.00
2 Genworth Seg. de Credito	14,138	15,851	10.20	10.52	(1,713)	(10.81)	100.00	100.00
Grandes	138,608	150,732	100.00	100.00	(12,124)	(8.04)	100.00	100.00
Total	138,608	150,732	100.00	100.00	(12,124)	(8.04)	100.00	100.00

NE = No Existe

* % Extraordinario mayor de 1000%



Análisis de Primas Directas

Primer Trimestre 2018

EstadisticAMIS (Primas)

Diversos Total

Cifras en miles

Compañías	Primas Directas		% Part. en Merc.		Incremento		% de Cartera		
	2018 Importe	2017 Importe	2018	2017	Importe	%	Por Operación	Total Cartera	
1	Inbursa	548,397	456,885	10.41	8.36	91,512	20.03	100.00	11.36
2	Mapfre México	455,772	345,846	8.65	6.33	109,925	31.78	100.00	9.72
3	FM Global	406,513	420,937	7.71	7.70	(14,424)	(3.43)	100.00	52.49
4	AXA Seguros	376,442	435,343	7.14	7.96	(58,901)	(13.53)	100.00	4.07
5	BBVA Bancomer	365,716	449,969	6.94	8.23	(84,253)	(18.72)	100.00	4.87
	Grandes	2,152,839	2,108,980	40.85	38.58	43,859	2.08	100.00	7.96
6	Zurich Santander	357,596	407,707	6.79	7.46	(50,112)	(12.29)	100.00	21.27
7	Allianz México	325,918	480,892	6.18	8.80	(154,974)	(32.23)	100.00	12.37
8	Atlas	294,174	311,884	5.58	5.70	(17,710)	(5.68)	100.00	7.85
9	Banorte	283,409	296,089	5.38	5.42	(12,680)	(4.28)	100.00	2.14
10	GMX Seguros	278,838	137,658	5.29	2.52	141,180	102.56	100.00	10.58
11	Chubb de México	253,186	224,824	4.80	4.11	28,362	12.62	100.00	4.97
12	G.N.P.	187,777	168,933	3.56	3.09	18,844	11.15	100.00	1.33
13	Zurich Daños	164,940	171,956	3.13	3.15	(7,016)	(4.08)	100.00	7.63
14	Seguros SURA	159,498	83,082	3.03	1.52	76,416	91.98	100.00	14.93
15	Afirme	140,867	63,064	2.67	1.15	77,803	123.37	100.00	7.93
	Medianas	2,446,202	2,346,090	46.41	42.91	100,112	4.27	100	5.08
16	Assurant Daños	119,646	120,329	2.27	2.20	(684)	(0.57)	100.00	61.91
17	AIG Seguros	95,762	59,824	1.82	1.09	35,938	60.07	100.00	6.90
18	Patrimonial Inbursa	68,506	86,915	1.30	1.59	(18,409)	(21.18)	100.00	10.79
19	XL Seguros	65,815	51,851	1.25	0.95	13,964	26.93	100.00	24.08
20	HDI Seguros	59,873	52,821	1.14	0.97	7,052	13.35	100.00	2.81
21	Cardif Seguros Generales	59,635	448,587	1.13	8.21	(388,952)	(86.71)	100.00	49.67
22	Seguros Azteca Daños	53,445	53,478	1.01	0.98	(33)	(0.06)	100.00	27.77
23	HDI-Gerling	28,252	24,458	0.54	0.45	3,794	15.51	100.00	10.55
24	Tokio Marine	21,063	14,417	0.40	0.26	6,646	46.10	100.00	10.97
25	General de Seguros	14,963	17,360	0.28	0.32	(2,397)	(13.81)	100.00	2.30
26	Primero Seguros	14,393	18,864	0.27	0.35	(4,471)	(23.70)	100.00	5.10
27	Citibanamex Seguros	13,222	15,055	0.25	0.28	(1,833)	(12.18)	100.00	0.19
28	Berkley Seguros	11,914	0	0.23	0.00	11,914		100.00	33.91
29	El Potosi	10,753	10,642	0.20	0.19	111	1.04	100.00	2.56
30	El Aguila	10,310	10,544	0.20	0.19	(234)	(2.22)	100.00	4.80
31	Sompo Japan	8,087	10,173	0.15	0.19	(2,086)	(20.51)	100.00	4.36
32	Ve Por Más	4,886	3,544	0.09	0.06	1,342	37.86	100.00	0.71
33	Virginia Surety	4,138	0	0.08	0.00	4,138		100.00	64.02
34	HSBC Seguros	3,538	7,661	0.07	0.14	(4,123)	(53.82)	100.00	0.51
35	La Latinoamericana	3,101	5,154	0.06	0.09	(2,052)	(39.82)	100.00	1.12
36	Interacciones	0	239	0.00	0.00	(239)	(100.00)		0.00
	Resto	671,302	1,011,916	12.74	18.51	(340,614)	(33.66)	100.00	4.22
	Total	5,270,343	5,466,985	100.00	100.00	(196,643)	(3.60)	100.00	5.78

NE = No Existe

* % Extraordinario mayor de 1000%



Análisis de Primas Directas

Primer Trimestre 2018

EstadisticAMIS (Primas)

Diversos Misceláneos

Cifras en miles

Compañías	Primas Directas		% Part. en Merc.		Incremento		% de Cartera	
	2018 Importe	2017 Importe	2018	2017	Importe	%	Por Operación	Total Cartera
1 Zurich Santander	352,125	401,619	14.39	14.53	(49,494)	(12.32)	98.47	20.94
2 BBVA Bancomer	331,052	413,677	13.53	14.97	(82,625)	(19.97)	90.52	4.41
3 AXA Seguros	215,390	275,331	8.80	9.96	(59,941)	(21.77)	57.22	2.33
4 Inbursa	186,784	134,194	7.63	4.85	52,590	39.19	34.06	3.87
5 FM Global	181,564	189,927	7.42	6.87	(8,363)	(4.40)	44.66	23.44
Grandes	1,266,916	1,414,748	51.77	51.18	(147,832)	(10.45)	61.66	5.27
6 Banorte	168,040	159,036	6.87	5.75	9,004	5.66	59.29	1.27
7 Assurant Daños	119,579	116,455	4.89	4.21	3,124	2.68	99.94	61.87
8 G.N.P.	105,664	47,832	4.32	1.73	57,832	120.91	56.27	0.75
9 GMX Seguros	100,395	39,884	4.10	1.44	60,510	151.71	36.00	3.81
10 Chubb de México	81,938	98,973	3.35	3.58	(17,036)	(17.21)	32.36	1.61
11 Mapfre México	77,264	46,828	3.16	1.69	30,436	65.00	16.95	1.65
12 Atlas	69,634	55,513	2.85	2.01	14,122	25.44	23.67	1.86
13 Patrimonial Inbursa	64,494	79,165	2.64	2.86	(14,670)	(18.53)	94.14	10.16
14 Cardif Seguros Generales	59,635	448,587	2.44	16.23	(388,952)	(86.71)	100.00	49.67
15 Afirme	58,729	30,824	2.40	1.12	27,905	90.53	41.69	3.31
Medianas	905,370	1,123,097	37	40.63	(217,726)	(19.39)	42.27	1.96
16 AIG Seguros	54,321	40,108	2.22	1.45	14,213	35.44	56.72	3.92
17 Zurich Daños	40,659	27,603	1.66	1.00	13,057	47.30	24.65	1.88
18 Seguros Azteca Daños	38,965	38,958	1.59	1.41	8	0.02	72.91	20.25
19 Seguros SURA	28,327	16,429	1.16	0.59	11,899	72.43	17.76	2.65
20 HDI Seguros	24,361	22,605	1.00	0.82	1,756	7.77	40.69	1.14
21 Allianz México	22,760	18,311	0.93	0.66	4,449	24.29	6.98	0.86
22 Citibanamex Seguros	12,359	14,255	0.51	0.52	(1,896)	(13.30)	93.48	0.18
23 Tokio Marine	9,362	4,145	0.38	0.15	5,216	125.84	44.45	4.88
24 General de Seguros	9,289	10,985	0.38	0.40	(1,697)	(15.45)	62.08	1.42
25 XL Seguros	5,182	4,474	0.21	0.16	708	15.84	7.87	1.90
26 Primero Seguros	4,873	4,167	0.20	0.15	706	16.94	33.86	1.73
27 El Potosi	4,556	4,458	0.19	0.16	98	2.20	42.37	1.08
28 El Aguila	4,322	3,970	0.18	0.14	352	8.86	41.92	2.01
29 Virginia Surety	4,138	0	0.17	0.00	4,138		100.00	64.02
30 HSBC Seguros	3,538	7,661	0.14	0.28	(4,123)	(53.82)	100.00	0.51
31 Ve Por Más	3,482	2,049	0.14	0.07	1,434	69.98	71.27	0.51
32 La Latinoamericana	2,914	4,868	0.12	0.18	(1,954)	(40.13)	93.97	1.05
33 Sompjo Japan	1,092	1,327	0.04	0.05	(235)	(17.71)	13.50	0.59
34 Berkley Seguros	240	0	0.01	0.00	240		2.02	0.68
35 Interacciones	0	13	0.00	0.00	(13)	(100.00)		0.00
Resto	274,742	226,386	11.23	8.19	48,356	21.36	26.28	1.34
Total	2,447,028	2,764,230	100.00	100.00	(317,202)	(11.48)	46.68	2.69

NE = No Existe

* % Extraordinario mayor de 1000%



EstadisticAMIS (Primas)

Diversos Técnicos

Cifras en miles

Compañías	Primas Directas		% Part. en Merc.		Incremento		% de Cartera	
	2018 Importe	2017 Importe	2018	2017	Importe	%	Por Operación	Total Cartera
1 Mapfre México	378,508	299,018	13.41	11.06	79,489	26.58	83.05	8.07
2 Inbursa	361,613	322,691	12.81	11.94	38,922	12.06	65.94	7.49
3 Allianz México	303,158	462,581	10.74	17.12	(159,423)	(34.46)	93.02	11.51
4 FM Global	224,949	231,010	7.97	8.55	(6,061)	(2.62)	55.34	29.04
5 Atlas	224,539	256,371	7.95	9.49	(31,832)	(12.42)	76.33	5.99
Grandes	1,492,766	1,571,671	52.87	58.15	(78,905)	(5.02)	73.51	8.95
6 GMX Seguros	178,443	97,773	6.32	3.62	80,670	82.51	64.00	6.77
7 Chubb de México	171,248	125,851	6.07	4.66	45,398	36.07	67.64	3.36
8 AXA Seguros	161,052	160,012	5.70	5.92	1,040	0.65	42.78	1.74
9 Seguros SURA	131,170	66,653	4.65	2.47	64,517	96.79	82.24	12.28
10 Zurich Daños	124,281	144,353	4.40	5.34	(20,072)	(13.91)	75.35	5.75
11 Banorte	115,369	137,053	4.09	5.07	(21,684)	(15.82)	40.71	0.87
12 Afirme	82,138	32,241	2.91	1.19	49,898	154.77	58.31	4.63
13 G.N.P.	82,113	121,102	2.91	4.48	(38,988)	(32.19)	43.73	0.58
14 XL Seguros	60,633	47,377	2.15	1.75	13,256	27.98	92.13	22.18
15 AIG Seguros	41,441	19,716	1.47	0.73	21,725	110.19	43.28	2.99
Medianas	1,147,889	952,130	40.66	35.23	195,759	20.56	57.21	2.25
16 HDI Seguros	35,511	30,216	1.26	1.12	5,296	17.53	59.31	1.67
17 BBVA Bancomer	34,664	36,292	1.23	1.34	(1,628)	(4.49)	9.48	0.46
18 HDI-Gerling	28,252	24,458	1.00	0.90	3,794	15.51	100.00	10.55
19 Seguros Azteca Daños	14,479	14,521	0.51	0.54	(41)	(0.28)	27.09	7.52
20 Tokio Marine	11,702	10,272	0.41	0.38	1,429	13.92	55.55	6.10
21 Berkley Seguros	11,674	0	0.41	0.00	11,674		97.98	33.23
22 Primero Seguros	9,520	14,697	0.34	0.54	(5,177)	(35.23)	66.14	3.37
23 Sompo Japan	6,995	8,846	0.25	0.33	(1,851)	(20.93)	86.50	3.77
24 El Potosi	6,197	6,184	0.22	0.23	13	0.21	57.63	1.48
25 El Aguila	5,988	6,574	0.21	0.24	(586)	(8.92)	58.08	2.79
26 General de Seguros	5,675	6,375	0.20	0.24	(700)	(10.98)	37.92	0.87
27 Zurich Santander	5,470	6,088	0.19	0.23	(618)	(10.15)	1.53	0.33
28 Patrimonial Inbursa	4,012	7,750	0.14	0.29	(3,738)	(48.24)	5.86	0.63
29 Ve Por Más	1,404	1,495	0.05	0.06	(92)	(6.13)	28.73	0.20
30 Citibanamex Seguros	863	800	0.03	0.03	63	7.90	6.52	0.01
31 La Latinoamericana	187	286	0.01	0.01	(99)	(34.55)	6.03	0.07
32 Assurant Daños	67	3,875	0.00	0.14	(3,808)	(98.27)	0.06	0.03
33 Interacciones	0	226	0.00	0.01	(226)	(100.00)		0.00
Resto	182,659	178,954	6.47	6.62	3,705	2.07	15.67	0.81
Total	2,823,315	2,702,755	100.00	100.00	120,560	4.46	54.26	3.13

NE = No Existe

* % Extraordinario mayor de 1000%



Editado por:

Asociación Mexicana de Instituciones de Seguros, A.C.